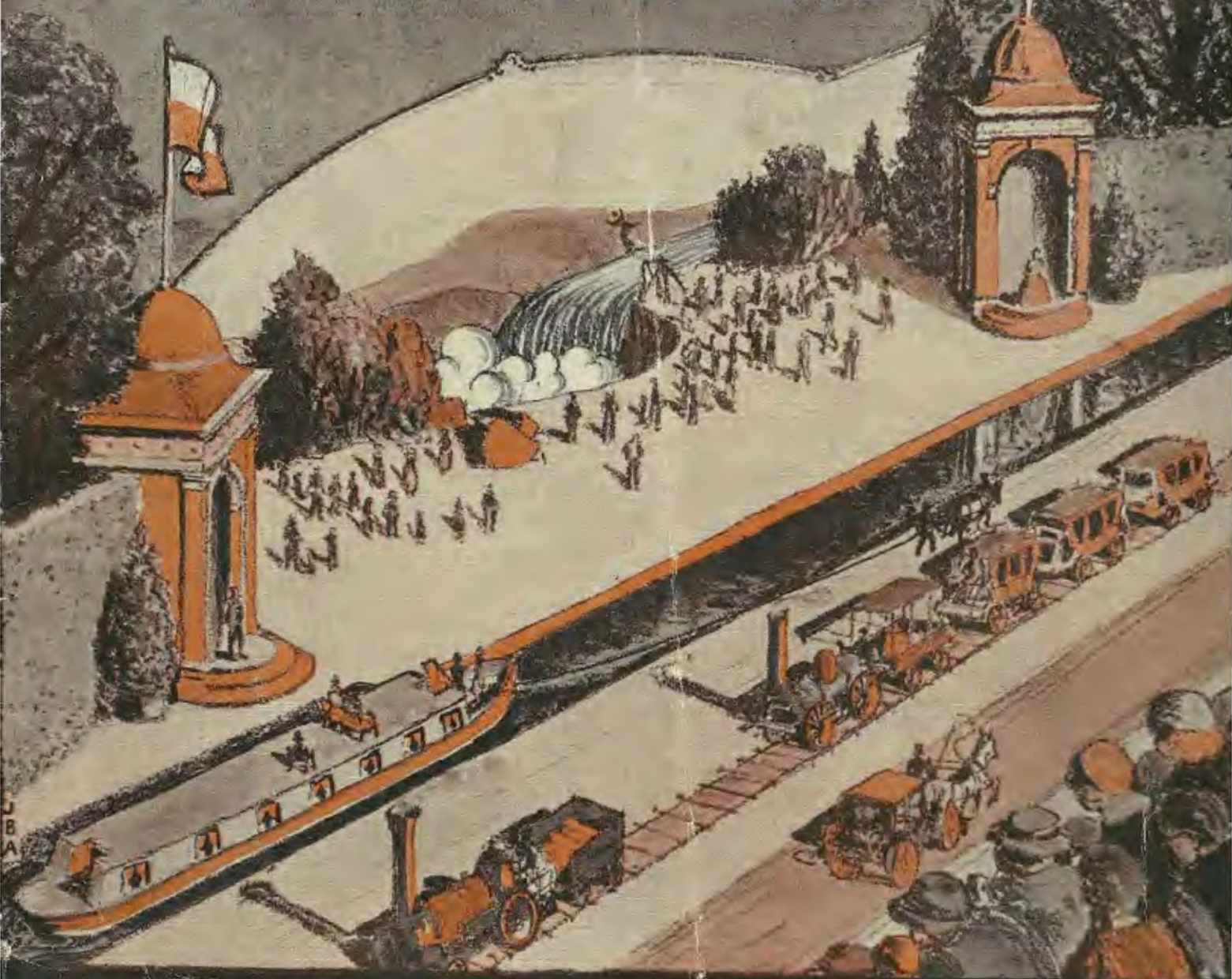


Souvenir Program

# PATHWAYS OF PROGRESS

The Pageant of Rochester



A CENTURY ON PARADE  
ROCHESTER CENTENNIAL  
EXHIBITION

*Aug. 11 to Sept. 9, 1934*

PRICE 10¢



SAM PATCH'S LAST JUMP—SCENE 3

THE  
ROCHESTER CENTENNIAL

P R E S E N T S

*Pathways of Progress*

THE PAGEANT OF ROCHESTER

BY

EDWARD HUNGERFORD

*Author and Producer of WINGS OF A CENTURY*



*Incidental Music by*

NORMAN SORENG WRIGHT *and* R. NATHANIEL DETT

*Staged and Directed by*

ADELE GUTMAN NATHAN

*In the event of rain and the consequent necessity of abandoning any one performance of Pathways of Progress rain checks valid for any subsequent performance will be issued, provided that the performance has proceeded no further than the end of the sixth scene.*

THE SCRIPT OF *Pathways of Progress* IS COPYRIGHTED 1934 BY EDWARD HUNGERFORD.  
ALL RIGHTS RESERVED INCLUDING THAT OF DRAMATIC PRESENTATION IN ANY FORM.

PROLOGUE

*The Forest*

*"How still this forest  
How soft this sky  
Beneath this thatch a new world  
    sleeps—  
Then man comes nigh.  
  
Swift runs the noisy river,  
The mad and merry Genesee,  
Born of the mountains,  
Bride of the sea.*

*A short life—and a merry one  
Tumbling and tossing,  
Reaching Northward all the way.  
Still moments in shady pools.  
Rushing madly onward once again  
Plunging o'er great falls  
Losing itself in the mighty Ontario  
Far from the open sea."*

MARY JEMISON . . . . .	Virginia Nugent
INDIAN CHIEF . . . . .	Eliot Sharpe
EBENEZER ALLAN . . . . .	Elwin Kneale
NATHANIEL ROCHESTER . . . . .	William Hall
MRS. ROCHESTER . . . . .	Marian Lewis
COLONEL FITZHUGH . . . . .	Joseph Durbin
MAJOR CARROLL . . . . .	Cameron Switzer

SCENE 1.

*Pathways of Progress*

1823 — 1837

*"The westward trek has now begun,  
A slender rivulet of folk, beaded  
Straight toward the setting sun,  
A steady torrent has become.  
Men, horses, wagons, coaches,  
In serried ranks  
Press—Westward ho!  
And falter not.*

*The reputation of the town has spread  
afar.  
Some tarry here—and go no farther.  
For others, the road forks wide.  
Two roads in fact.  
The one, along the Ridge doth go,  
The other, south, to Buffalo.  
Night and day and day and night  
The travelers halt  
And then press on again  
A restless folk—unending train."*

*At Rochester they halt; perchance*

GOVERNOR CLINTON . . . . .	Arthur Austin
STEPHEN VAN RENSSELAER . . . . .	Donald Ward
CAPTAIN OF <i>The Young Lion of the West</i> . . . . .	Nathan Emanuel
CAPTAIN OF THE <i>Seneca Chief</i> . . . . .	Cameron Switzer
CAPTAIN CHESHIRE . . . . .	Thomas Collins
ENGINEER OF THE TONAWANDA R. R. . . . .	Stephen Aubourn
ENGINEER OF THE <i>DeWitt Clinton</i> . . . . .	James L. Stark
THURLOW WEED . . . . .	Basil Robinson

SCENE 2.

*The Marquis Bows*

1825

*"A gentleman of fair renown;  
From far without the limits of this town."*

THE MARQUIS DE LA FAYETTE . . . . . Marty Vogt  
A VOICE . . . . . Janice Stonaker

SCENE 3.

*Sam Patch*

1829

*"A curious fellow—come out of some New England state.  
He brags too much. He doth relate  
Of all his prowess, here and there.  
He jumped at Paterson—the Chasm Bridge  
And then—not far from here—up the Ridge,  
Into the deep falls of Niagara,  
And lived to tell the tale."*

SAM PATCH . . . . . Marty Vogt  
WILLIAM COCHRANE . . . . . Charles DeRitis  
JOHN O'DONOHUE . . . . . James P. Wilson  
A WOMAN IN THE CROWD . . . . . Marian Lewis

SCENE 4.

*Staff of Life*

1840

*"The mills of Rochester, perched high upon  
the Genesee, grind slowly, but they  
grind exceedingly well."*

SCENE 5.

*The Young Lion of the West*

1851—1855

*"Rochester in the mid-fifties:  
A brave, gay, town,  
A brisk town,  
Busy, with many businesses  
And yet, withal, a town of charm and culture,  
Where industry walks hand in hand with intelligence."*

HIRAM SIBLEY . . . . . Joseph Durbin  
HENRY S. POTTER . . . . . William Hall  
JACOB GOULD . . . . . Bruce Shields  
JAMES VICK . . . . . Charles Strong Quinn  
JOHN J. BAUSCH . . . . . Sam Kelman  
FREDERICK DOUGLASS . . . . . Nelson Nenson  
MARGARETTA FOX . . . . . Janice Stonaker  
KATE FOX . . . . . Marion Wright

SCENE 6.

*Roll of Drums*

1862

*"Gone are our peaceful yesterdays,  
Gone their quiet and repose."*

DELAVER . . . . .	Marty Vogt
CAPTAIN WHITTLESEY . . . . .	Donald Ward
CAPTAIN LOMB . . . . .	Robert McCowan
COLONEL QUIMBY . . . . .	Robert Sloan
CAPTAIN PIERCE . . . . .	George Leader
COLONEL PALMER . . . . .	Hugh Jack
LEWIS SWIFT . . . . .	Henry Adams

*Words for the Genesee Love Song, sung in this scene, are by Miss Betsy Byrnes, music by Norman Sorensg Wright*

SCENE 7.

*The Four Corners*

1884

<i>"The year is eighteen-eighty-four Just fifty years have passed—no more Since Rochester first attained the dignity of cityhood.</i>	<i>The pioneers are gone. Two generations since Have come to do their city Full honor and full service.</i>
---	---

*'In less than sixty years'  
One Hamlet Scrantom wrote.  
'The spot where this house stands  
'Will be the center of a great city'."*

LEWIS SWIFT . . . . .	Henry Adams
DANIEL POWERS . . . . .	Marty Vogt
NATHAN STEIN . . . . .	Arthur Austin
LEOPOLD BLOCH . . . . .	Alvah Sweeting
HENRY MICHAELS . . . . .	Nathan Emanuel
LEVI ADLER . . . . .	Ben Rosenthal
JACOB FREEMAN . . . . .	Dick Lee
HENRY STERN . . . . .	Joseph Durbin
SUSAN B. ANTHONY . . . . .	Julia Blundell
GEORGE EASTMAN . . . . .	Lester Parker

SCENE 8.

*Trial By Fire*

1884

*"That man—undaunted—keeps bobbing up serenely."*

DANIEL POWERS . . . . .	Marty Vogt
-------------------------	------------

SCENE 9.

*Speed*

1893

*"For soon these carriages will multiply,  
AUTOMOBILE is the name that men will give  
The strange device and drive it, far and fast.  
The horseless carriage, born this day here will last."*

GEORGE B. SELDON . . . . . Thomas Kelly

SCENE 10.

*Swift Run These Years*

1893 — 1934

*"The mad and merry Genesee,  
Long since harnessed, tamed,  
Enslaved to man's best efforts,  
Still in its sweet childhood,  
A gentle river is,  
Coming slowly through green fields,  
Twisting and turning its leisurely way  
Hurrying not.*

*"This is the valley  
Of peace and beauty*

*This is the valley of understanding."*

*"Rochester will continue to grow—in  
beauty and in strength  
But remember  
A city stands—a city grows—only by  
its own ability  
Man to man and woman to woman  
Courage, faith, nobility.  
THIS is the thing that men call  
vision.*

EXECUTIVE STAFF

General Director . . . . .	EDWARD HUNGERFORD
Director of Pageant . . . . .	ADELE GUTMAN NATHAN
Assistants to Director of Pageant . . . . .	{ CHARLES ALAN
	{ WALTER F. FOLMER
Stage Director . . . . .	PERRIN G. SOMERS
Musical Director . . . . .	VICTOR WAGNER
Stage Architect . . . . .	JAMES B. ARNOLD
Supervising Architect . . . . .	HANS OBERHAMMER
Business Manager . . . . .	LEON D. LEWIS
Superintendent . . . . .	A. L. VOLLMAN
Assistant Superintendent . . . . .	JOHN DONNELLY
Chief of Service . . . . .	FRANK L. SMITH
Stage Manager . . . . .	FREDERICK H. MARCILLE
Chief Electrician . . . . .	DOUGLAS MITCHELL
Chief of Properties . . . . .	EUGENE MARTIN
Costume Director . . . . .	ALICE COUCH

## *The Cast*

THE MAN . . . . . *Walter F. Folmer*  
THE WOMAN . . . . . *Roberta Beatty*

### ASSISTANT STAGE DIRECTORS

*(Also appearing in the cast)*

Jane Cullman, Ann McCarty, Julia Blondell, Elsie Stratton, Irene Gedney, Thomas Collins, Marty Vogt.

### THE ASSISTANT STAGE MANAGERS

*(Also appearing in the cast)*

Elliott Sharfe, Sam Kelman, Eddie Niner, Joseph Durbin, Emmett Peake, Hugh Jack, Virginia Nugent, Cameron Switzer, Marian Lewis, Mae Lochner, Nelson Henson, Arthur Austin, Basil Robinson, Nathan Emanuel, Marion Wright, Mildred B. Yates, Jean Titus, Walter Collins.

### ACTORS AND ACTRESSES

Katherine Harby, Mrs. Tremaine General, Marjorie Van Tassel, Rosemary Nugent, Ymske Tyssen, Joseph Weigel, General Jr., James P. Wilson, Charles DeRitis, Philip Fisher, Tremaine General, Charles Strong Quinn, Bruce Shields, Henry Adams, Elwin Kneale, William Hall, Walter Rye, Margay Roby, Frances O'Neill, Katharine Parker, Mrs. J. E. Rose, Mrs. A. E. Bennett, Miriam Woolford, Harold Rose, Virginia Shoemaker, William Henry Green, Edward L. Jackson, W. Stanley Clark, Stanley J. Thomas, Cleland Lewis, Alan Kramer, Oliver Yates, Cyrille La Porte, Donald Wolfe, I. R. Welsh, William Yates, George Parr, William Swartzenburg, Thomas Kelly, Joseph Bassett, Elmer Flood, Vincent DeRitis, Jack Mason, Cyril Eve, Fred Retallick, Seth Shaver, Raymond Arnold, William Rash, Nelson Bell, Milton Smith, Robert Kimball, Wilbur Wright, Wesley Fladd, Jack Kenyon, Alvah Sweeting, Donald Ward, Ben Rosenthal, Dick Lee, Ross Adams, Bill Woolford, Robert McCowan, Fred Sill, Margaret Wilbur, Janice Stonaker, Harland Evans, Richard Lansing, Reed Harding, Alan Jameson, John Woolford, George Leader, James Finley, Harold Macbeth, Jack Bauman, Lillian Wagner, Helen Sapere, Bob Parker, Monica Mason, Cyrilla Harby, Gilberte Hall, Marjorie Cox, Jane Adams, Lester Parker, David Dutcher, Donald Ver Hoeven, Eddie Olson, Ervin Eber, Richard Williamson, Larry Collins, Thomas Hobson, Robert Sloan, Roy McGregor, John Hart, Thomas Collins, Frederick Hale, Robert Kinghorn, James Meisenthal, Mary Shoemaker.

### STAGE CREW

Bernard Hazen, John Garvey, Henery Emerich, Lester Selinger, William Hogan.

The management of PATHWAYS OF PROGRESS acknowledges with grateful appreciation the following valuable properties loaned to the pageant. They have contributed immeasurably to the success of the production.

- LOCOMOTIVE *William Galloway* . . . . . Baltimore & Ohio Railroad Company
- LOCOMOTIVE *DeWitt Clinton* AND TRAIN . . . . . New York Central Railroad Company
- FIRE APPARATUS . . . . . Rochester Fire Department  
Brockport Fire Department
- BICYCLES . . . . . Towner Brothers
- THE HORSE CAR . . . . . New York State Railways
- THE PERAMBULATOR . . . . . Rochester Municipal Museum
- AUTOMOBILES . . . . . James H. Robinson, Albion, N.Y.  
Unit Parts Rochester Corporation  
Doyle Gasoline & Oil Co., Inc.  
William J. Henner  
Harper Sibley
- CARRIAGES AND OTHER HORSE-DRAWN VEHICLES . . . . . Edward H. Butler, LeRoy, N.Y.  
Mrs. W. Austin Wadsworth, Geneseo, N.Y.  
Harper Sibley  
Moseley & Motley Milling Co.  
Yates Estate (Geo. H. Clune)  
James Cunningham, Son & Company  
Milton R. McGregor
- WHEELS & WAGON PARTS . . . . . C. Schnackel
- HARNES . . . . . George Leader  
Edward H. Butler  
Mrs. W. Austin Wadsworth  
Harper Sibley
- THE PIANO . . . . . Levis Music Store
- THE CIVIL WAR FLAG . . . . . Charles Peck
- LUGGAGE . . . . . Milton Zelter

Scenery designed by Hans Oberhammer and executed by Michael Mungovan Studios.  
Costumes and make-up designed by Charles Alan and executed by Alice Couch, Eaves' Costume Company, G. Shindhelm "Reliable Wig Makers" Inc., Thomas-Horwitz Company.  
Sound equipment by Stromberg-Carlson Manufacturing Company; installed by Hickson Electric Company; executed by L. J. Harris.  
Lighting installed by the Dwyer Electric Company.  
Horses and all stock supplied by Milton G. McGregor.

## *Exhibitors and Concessions*

### BUILDING NO. 3

FEDERATION OF CHURCHES  
Catholic  
Jewish  
Protestant  
CHRISTIAN SCIENCE CHURCH

MONROE COUNTY MEDICAL SOCIETY  
N. Y. STATE COMMITTEE FOR CONTROL OF  
CANCER  
MONROE COUNTY DENTAL SOCIETY  
ROCHESTER OPTOMETRISTS

### BUILDING NO. 4

GENERAL RAILWAY SIGNAL COMPANY  
YAWMAN AND ERBE MANUFACTURING  
COMPANY  
F. E. REED GLASS COMPANY  
NEW YORK CENTRAL RAILROAD COMPANY  
THE WESTERN UNION TELEGRAPH COMPANY  
THE PLEASANT VALLEY WINE COMPANY  
ROCHESTER TIMES-UNION  
DEMOCRAT AND CHRONICLE  
COLONIAL BEACON OIL COMPANY  
RAILWAY EXPRESS AGENCY  
ROCHESTER TELEPHONE CORPORATION  
THE TODD COMPANY  
BRADFORD OIL REFINING COMPANY  
BALTIMORE & OHIO RAILROAD COMPANY  
CLOTHING INDUSTRY OF ROCHESTER  
SNIDER PACKING CORPORATION  
ROCHESTER COCA-COLA BOTTLING  
CORPORATION

TODDY, INC.  
ROCHESTER JOURNAL-AMERICAN  
CHURCH OF JESUS CHRIST OF LATTER DAY  
SAINTS  
THE GROLIER SOCIETY  
HOWE AND ROGERS COMPANY  
ROPER RANGE & FURNACE COMPANY  
HEATMASTER PRODUCTS  
UNITED STATES POST OFFICE  
UNITED STATES DEPARTMENT OF  
AGRICULTURE  
NEW YORK STATE CONSERVATION  
DEPARTMENT  
NEW YORK STATE BUREAU OF MILK  
PUBLICITY  
MONROE COUNTY FISH AND GAME  
PROTECTIVE ASSOCIATION  
GENERAL TRANSPORTATION EXHIBIT  
WARDS MUSEUM OF NATURAL SCIENCE

### BUILDING NO. 5

PHOTOSTAT CORPORATION  
TAYLOR INSTRUMENT COMPANIES  
BAUSCH AND LOMB OPTICAL COMPANY  
ROCHESTER GAS AND ELECTRICAL  
CORPORATION  
STROMBERG-CARLSON TELEPHONE  
MANUFACTURING COMPANY

DELCO APPLIANCE CORPORATION  
EASTMAN KODAK COMPANY  
INTERNATIONAL BUSINESS MACHINES  
CORPORATION  
HICKOK MANUFACTURING COMPANY  
GLEASON WORKS  
ROCHESTER TYPOTHETAE, INC.

THE PFAUDLER COMPANY

### BUILDING NO. 6

#### WOMEN'S WORK

Rochester Committee for Political Action  
Monroe County Society for the Handi-  
capped  
Mothers' Auxiliary, Boy Scouts of  
America  
Monroe County Tuberculosis and Health  
Association  
Rochester Federation of Women's Clubs

Rochester Home Bureau  
American Red Cross Society  
Public Health Nursing Association  
Lock Haven Welfare Club  
College Women's Club  
FOUR-H CLUB—(September 3 to 9 only)  
MONROE COUNTY SCHOOL WORK—  
(September 3 to 9 only)

### PERISTYLE BUILDING

ROCHESTER HOBBY CLUB—(August 11 to  
September 1 only)

AGRICULTURAL EXHIBIT—(September 3 to  
September 9 only)

OUTDOOR EXHIBITS  
(September 3 to September 9)

MONROE COUNTY CATTLE SHOW  
MONROE COUNTY SHEEP AND DRAFT HORSE  
SHOW  
MONROE COUNTY FOUR H CATTLE AND  
SHEEP CLUB

EARLY ROCHESTER VILLAGE

SCRANTOM'S INC.  
ROCHESTER SAVINGS BANK  
HOLLISTER LUMBER COMPANY  
ROCHESTER TIMES-UNION  
THE PAINE DRUG COMPANY  
THE ALLING AND CORY COMPANY  
LELAND-WESTON-LOWE  
GORSLINE AND SWAN CONSTRUCTION  
COMPANY  
SUNDERLIN COMPANY  
SIBLEY, LINDSAY AND CURR  
DEMOCRAT AND CHRONICLE  
JAMES FIELD COMPANY

CONCESSIONAIRES

GENERAL ICE CREAM CORPORATION  
ROCHESTER PACKING COMPANY  
FRANK MARSHALL AND J. KUCKER  
BRIGHTON PLACE DAIRY  
DR. S. C. ROMANO  
MRS. J. P. HASBROUCK  
CLARK QUALITY PRODUCTS  
CHARLES F. DEAN AND CHARLES MOORE  
CHARLES F. DEAN  
HAROLD MICHAELS  
DAVID SOLOMON  
TEALS ICE CREAM  
ROCHESTER COCA-COLA BOTTLING WORKS  
WILLARD P. CURRY  
DAVID B. PARKER  
WISHMAN'S CIGAR STORE

RESTAURANTS

THE SYMPHONY GARDEN . . . . . MAGGS CATERERS . . . . . The Promenade  
THE TEA GARDEN . . . . . TEALL'S . . . . . Early Rochester  
FRED ALLARD'S GRILL . . . . . The Parade  
CHURCH TENT—CALVARY BAPTIST CHURCH . . . . . Rochester Road  
AUTOMOBILE PARK—JAMES E. KITTRELL . . . . . Back of Pageant Grandstand

TELEGRAPH OFFICE

WESTERN UNION . . . . . Building No. 4

PUBLIC TELEPHONES

At convenient points in buildings and grounds

EMERGENCY HOSPITAL

East Side, Building No. 3

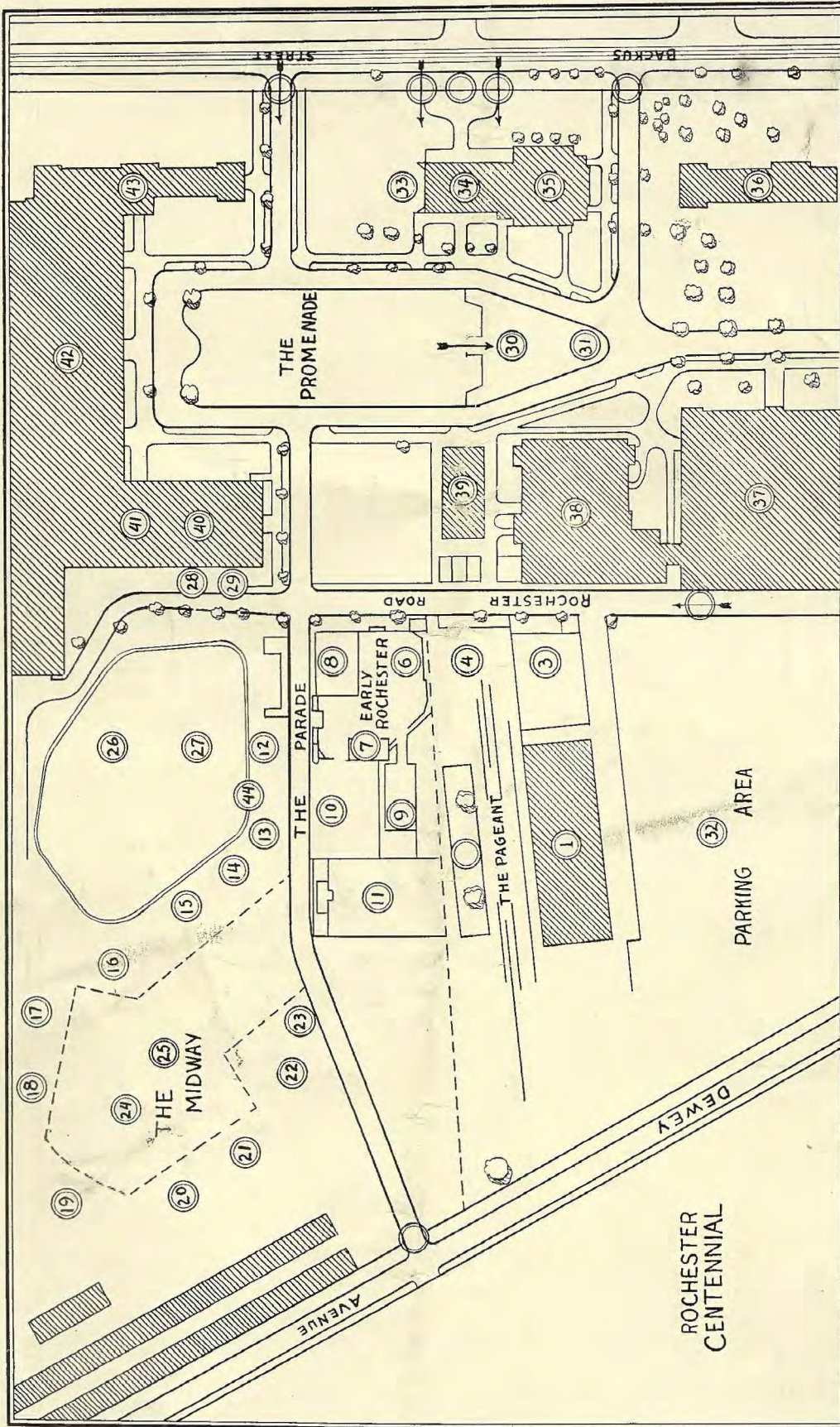
DAY NURSERY TENT

South Side, Jefferson Junior High School

EXECUTIVE OFFICES AND PRESS DEPARTMENTS . . . . . Building No. 3

3.50

MAP OF EDGERTON PARK — A CENTURY ON PARADE



- |   |                                |  |
|---|--------------------------------|--|
| 1. The Pageant Grandstand               | 22. The Circus                 | 39. Women's Exhibits                   |
| 2. The Pageant Stage                    | 23. The Monkey Drome           | 40. Early Rochester Industry           |
| 3. The World of a Million Years Ago     | 24. Chairplane                 | 41. Industrial Exhibits                |
| 4. Early Rochester City                 | 25. Leaping Lena               | 42. Industrial Exhibits                |
| 5. Old Court House                      | 26. Calvary Church Dining Tent | 43. Educational and Religious Exhibits |
| 6. The Dance Pavilion                   | 27. Horse Shoe Pitching        | 44. Executive Offices                  |
| 7. The Puppet Theater                   | 28. Fire Station               | Miniature Railway                      |
| 8. The Hopi Village                     | 29. Police Station             |  |
| 9. Fred Allard's Grill                  | 30. Viennese Garden            |  |
| 10. The Hawaiian Village                |                                |  |
| 11. The Great Manta                     |                                |  |
| 12. Prof. Armand's Mechanical City      |                                |  |
| 13. The Whip                            |                                |  |
| 14. Ferris Wheel                        |                                |  |
| 15. The Diving Horse                    |                                |  |
| 16. Alligator Wrestlers and Log Rolling |                                |  |
| 17. The Circus                          |                                |  |
| 18. The Monkey Drome                    |                                |  |
| 19. Chairplane                          |                                |  |
| 20. Leaping Lena                        |                                |  |
| 21. Calvary Church Dining Tent          |                                |  |
| 22. Horse Shoe Pitching                 |                                |  |
| 23. Fire Station                        |                                |  |
| 24. Police Station                      |                                |  |
| 25. Viennese Garden                     |                                |  |
| 26. The Circus                          |                                |  |
| 27. The Monkey Drome                    |                                |  |
| 28. Chairplane                          |                                |  |
| 29. Leaping Lena                        |                                |  |
| 30. Calvary Church Dining Tent          |                                |  |
| 31. Horse Shoe Pitching                 |                                |  |
| 32. Fire Station                        |                                |  |
| 33. Police Station                      |                                |  |
| 34. Viennese Garden                     |                                |  |
| 35. The Circus                          |                                |  |
| 36. The Monkey Drome                    |                                |  |
| 37. Chairplane                          |                                |  |
| 38. Leaping Lena                        |                                |  |
| 39. Calvary Church Dining Tent          |                                |  |
| 40. Horse Shoe Pitching                 |                                |  |
| 41. Fire Station                        |                                |  |
| 42. Police Station                      |                                |  |
| 43. Viennese Garden                     |                                |  |
| 44. The Circus                          |                                |  |