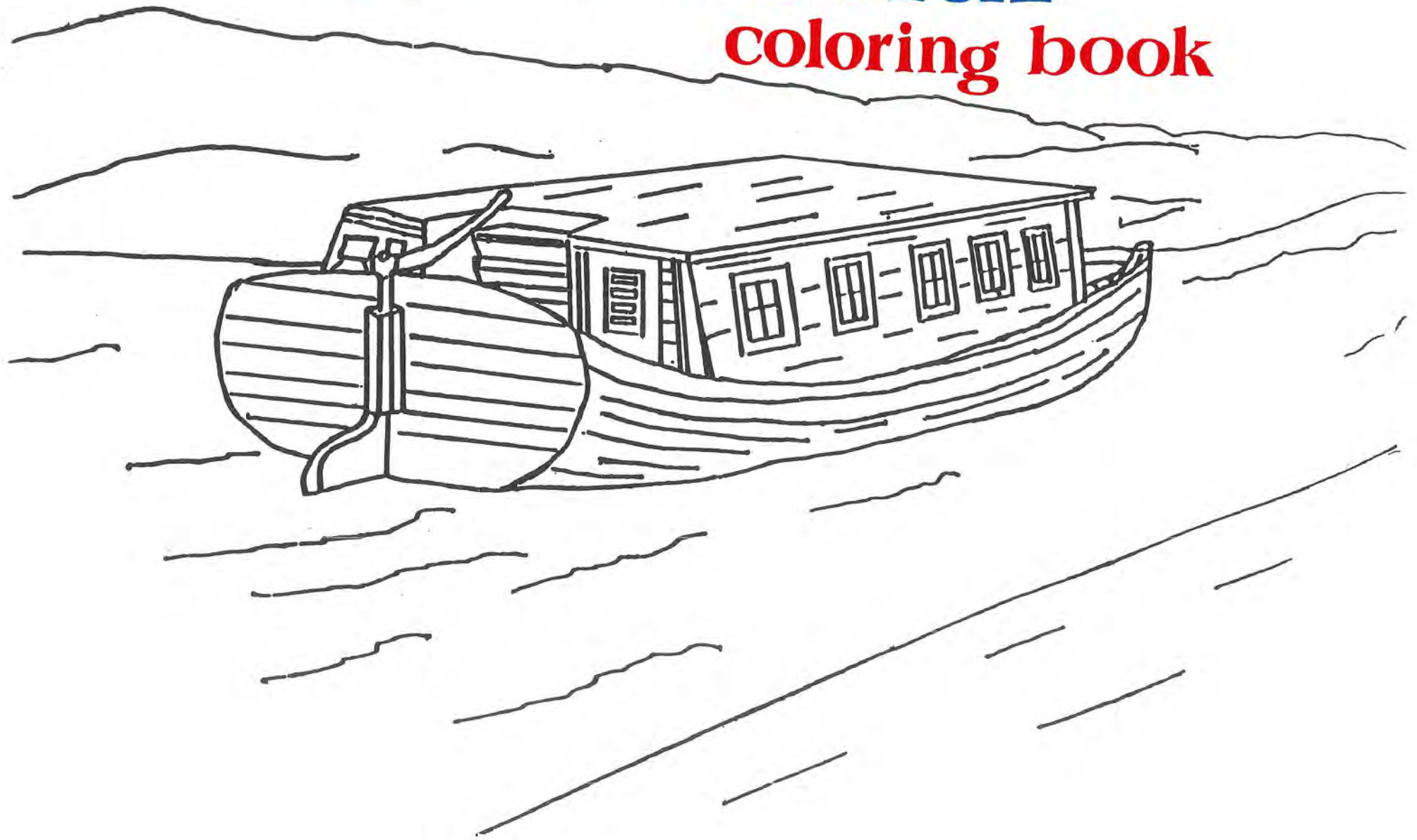
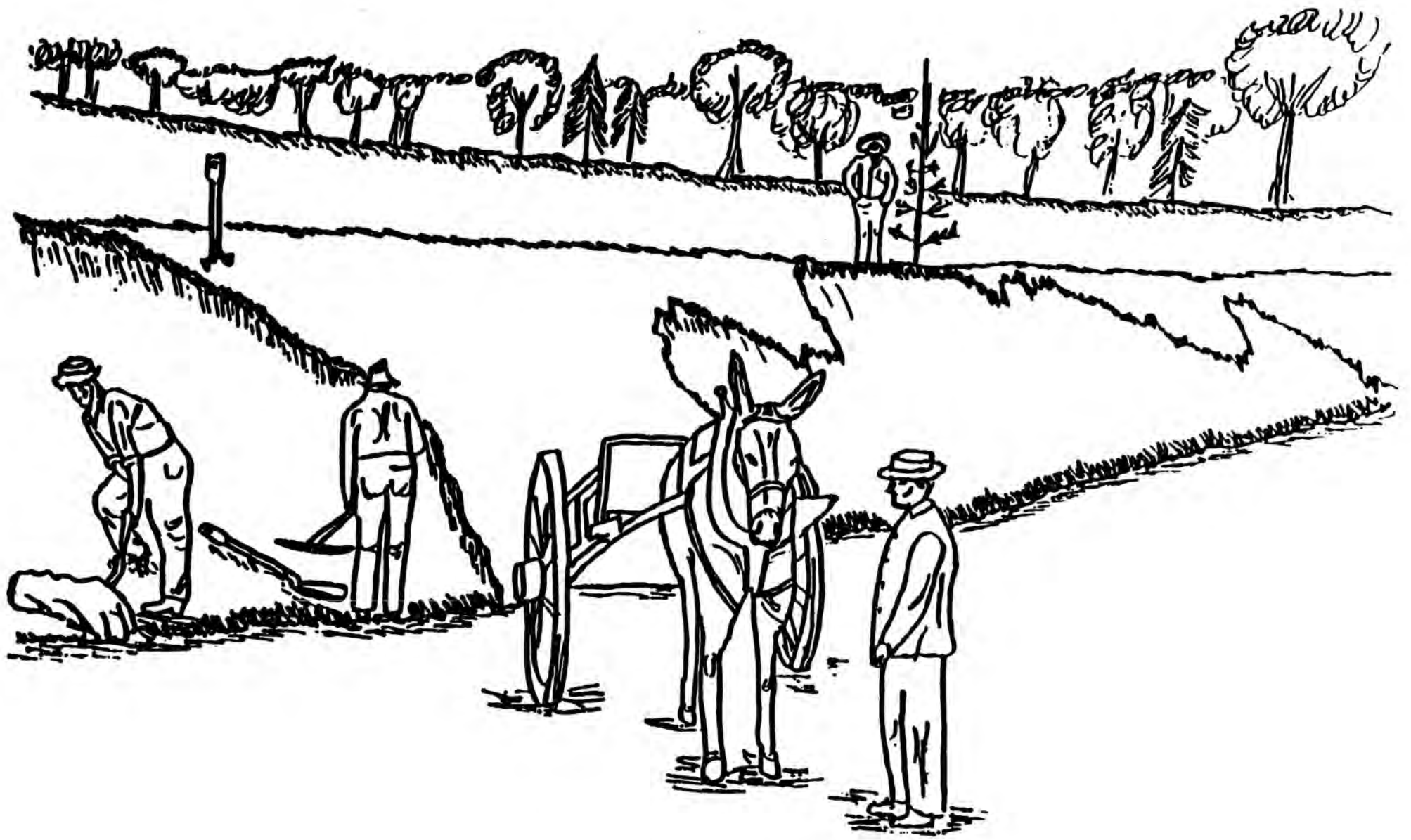


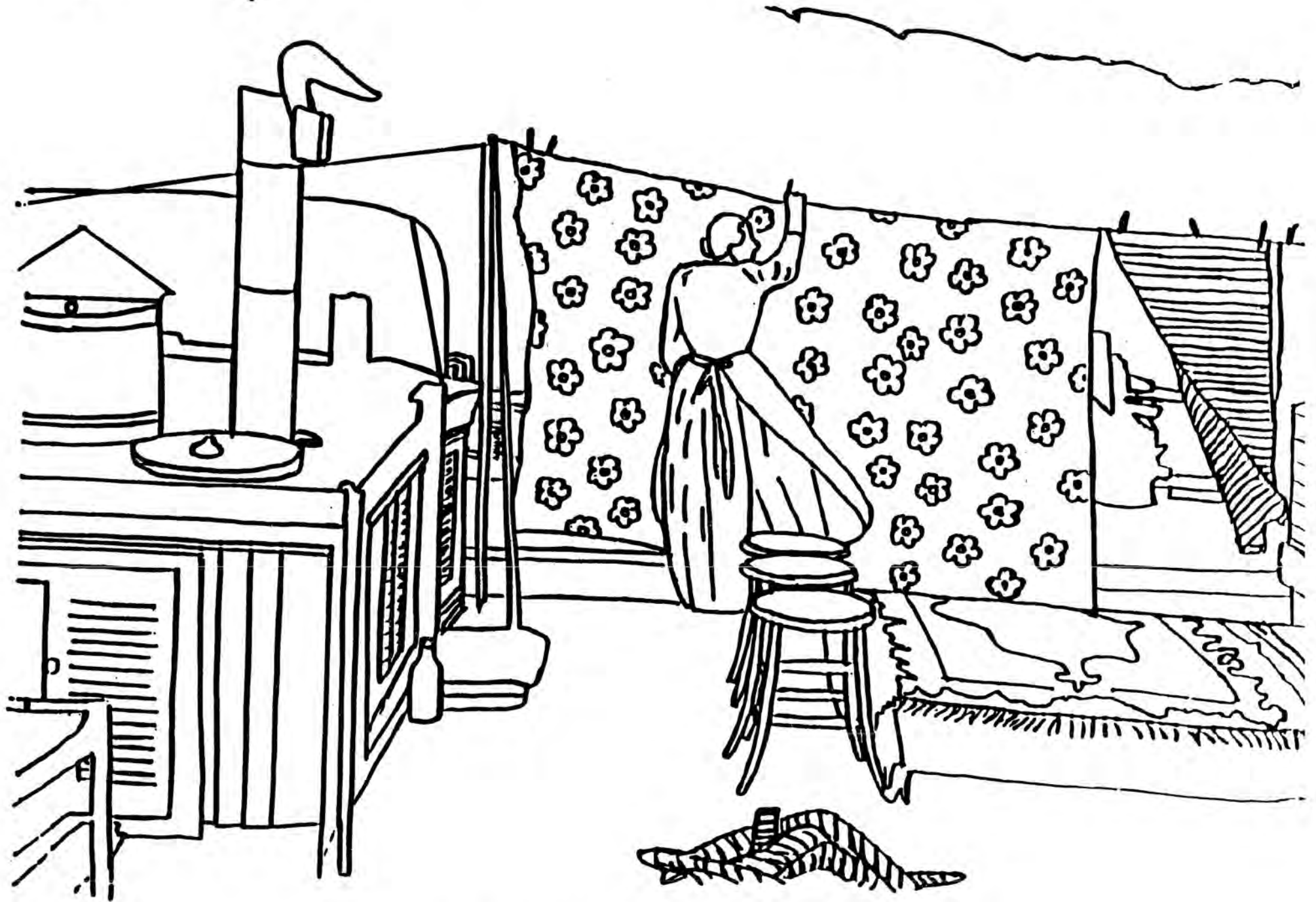
an **Erie Canal**

coloring book

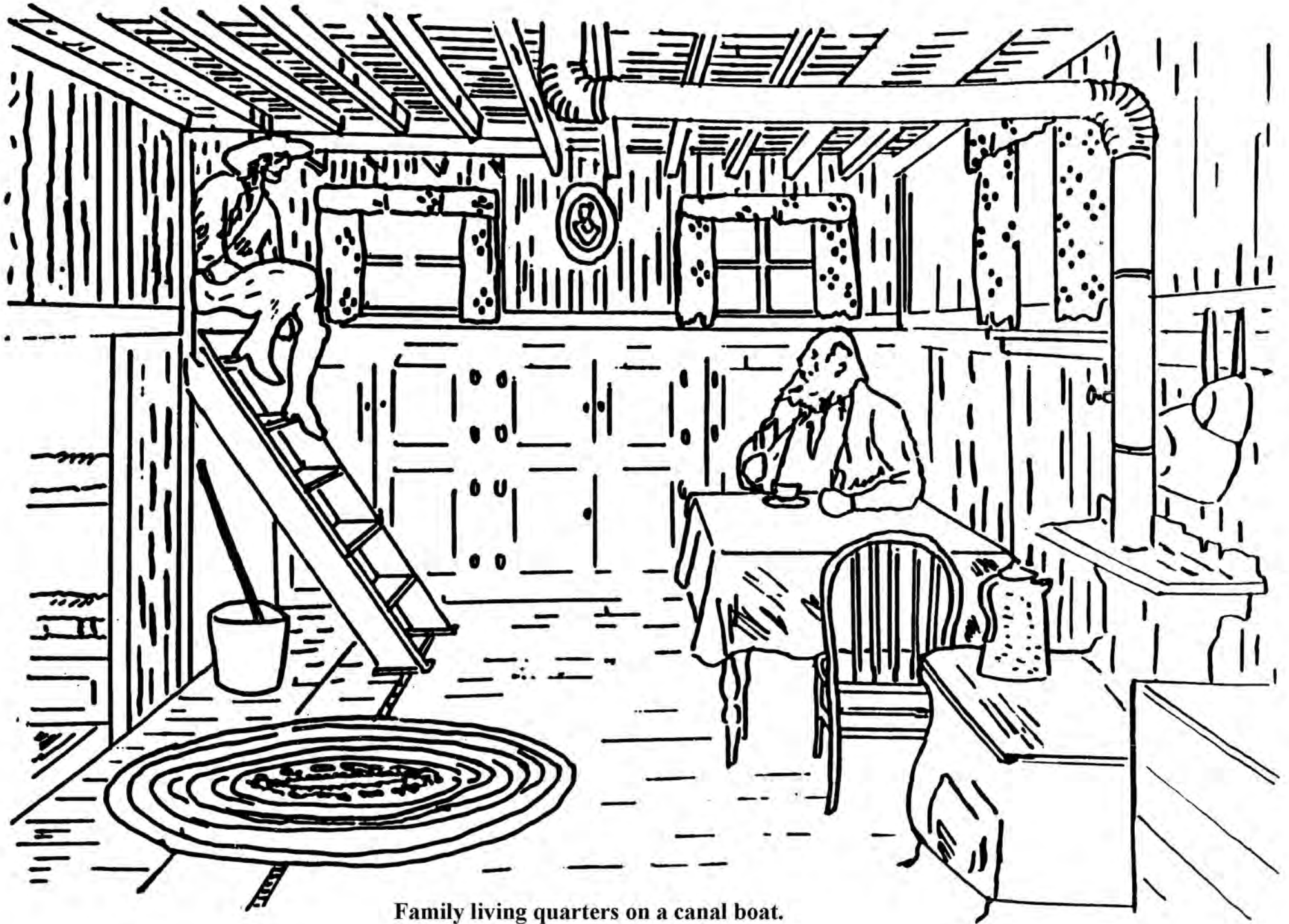




The original Erie Canal was dug by hand.



Spring Cleaning of deck on canal boat.



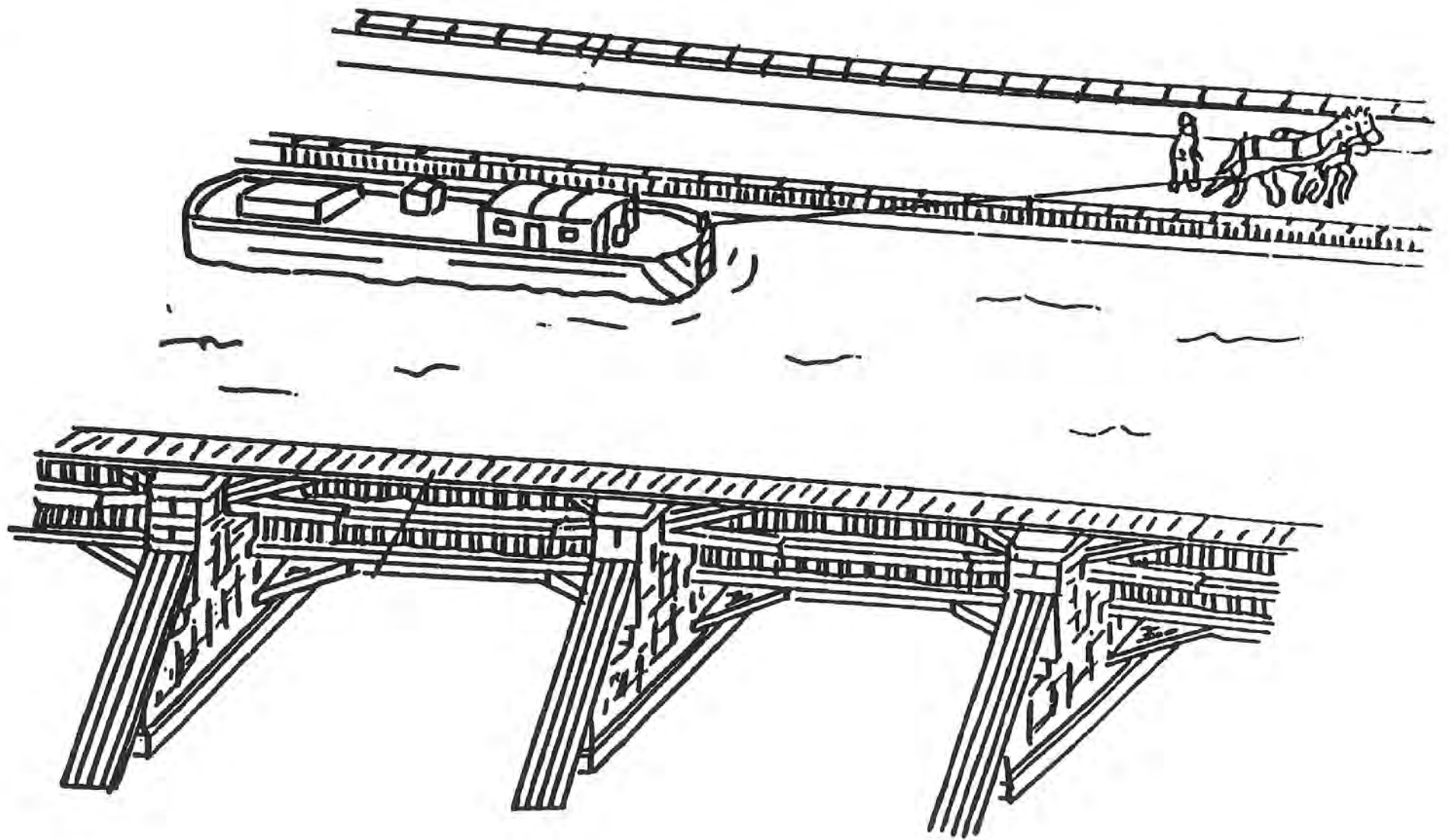
Family living quarters on a canal boat.



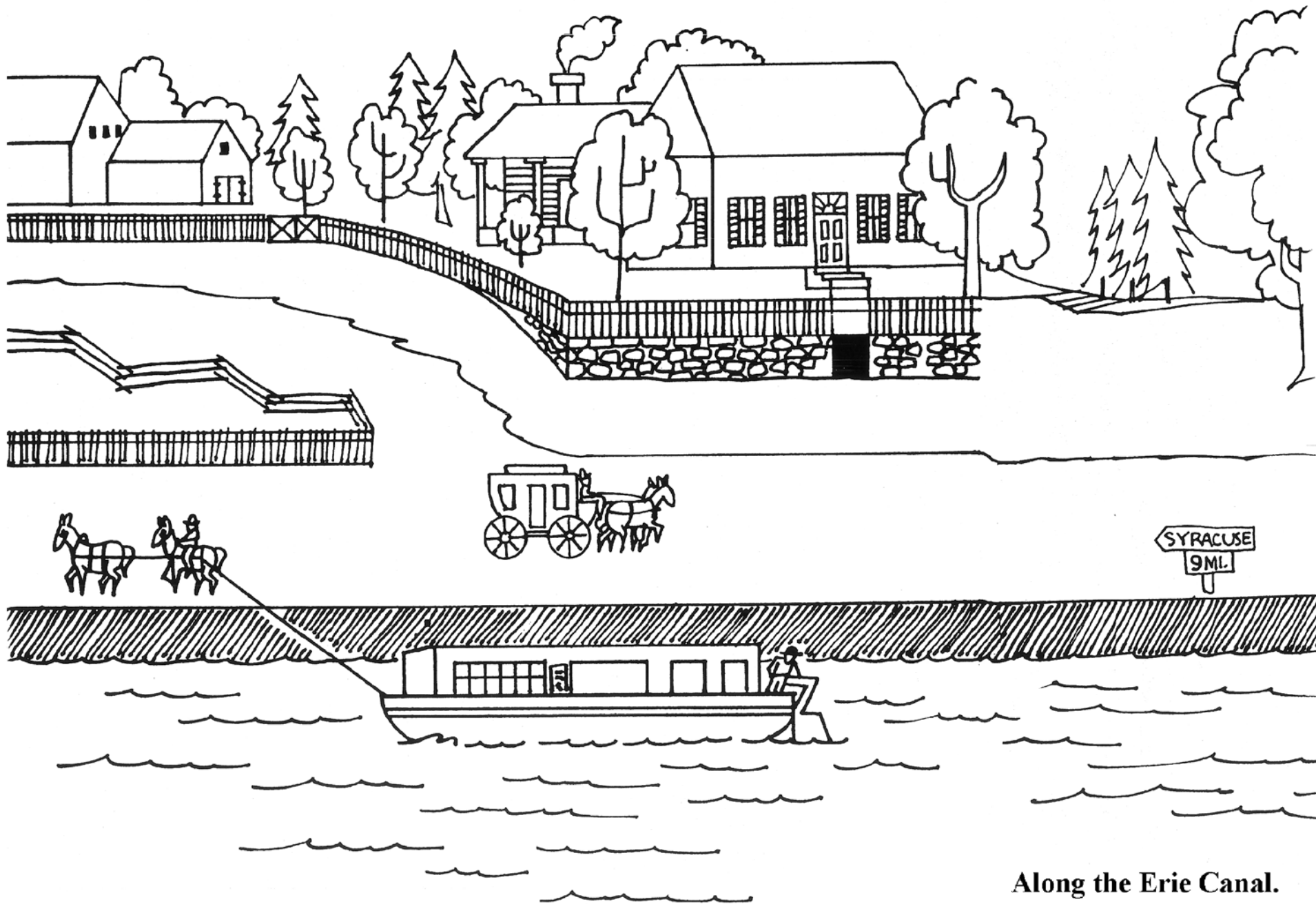
Many farms along the Erie Canal sold grain to feed the mules and horses towing the canal boats.



There were many stores along the Erie Canal. This store was located in Fort Hunter, N.Y. just east of the Schoharoe Aqueduct.



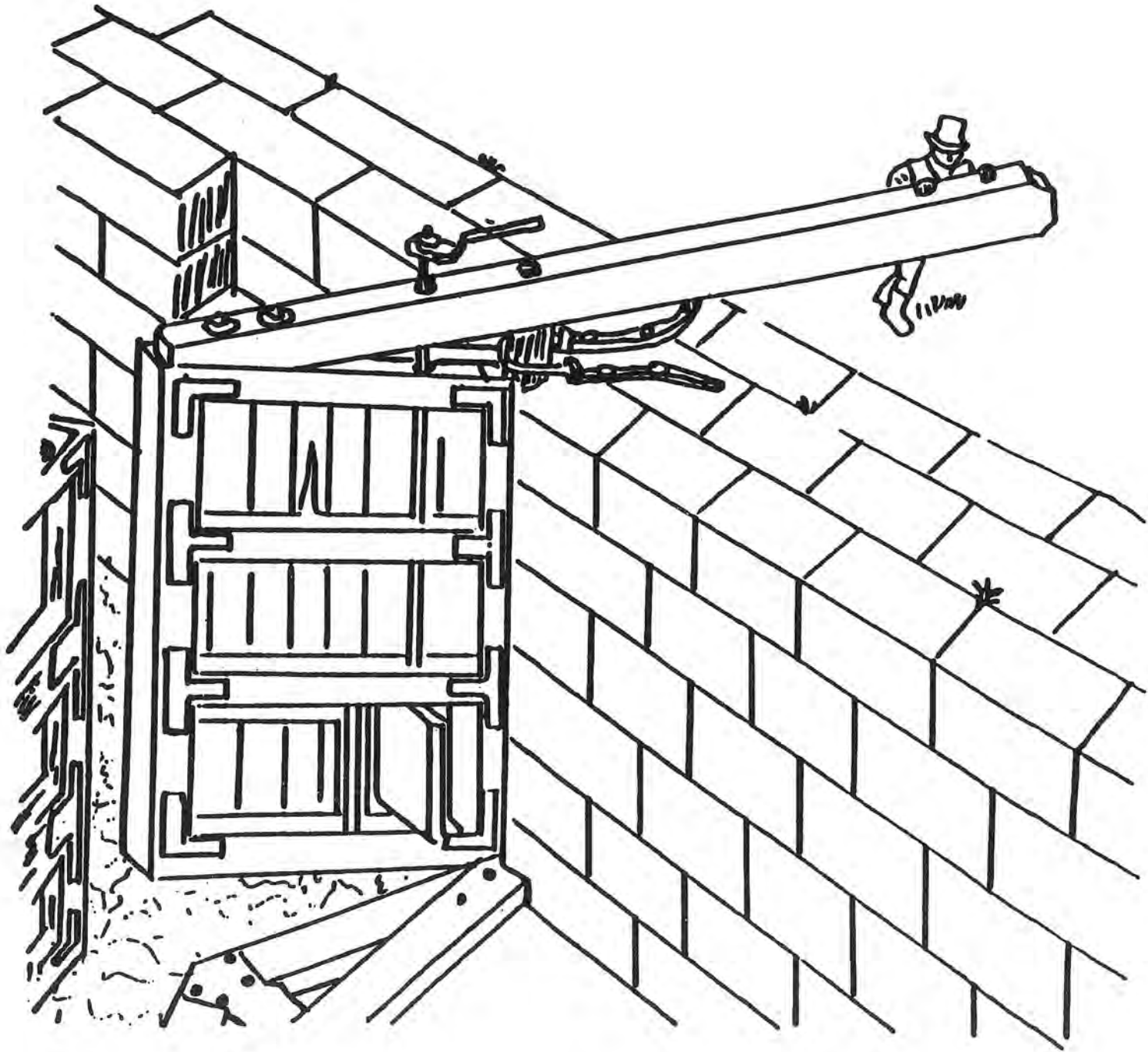
A view of the Schoharie Aqueduct at Fort Hunter, N.Y.



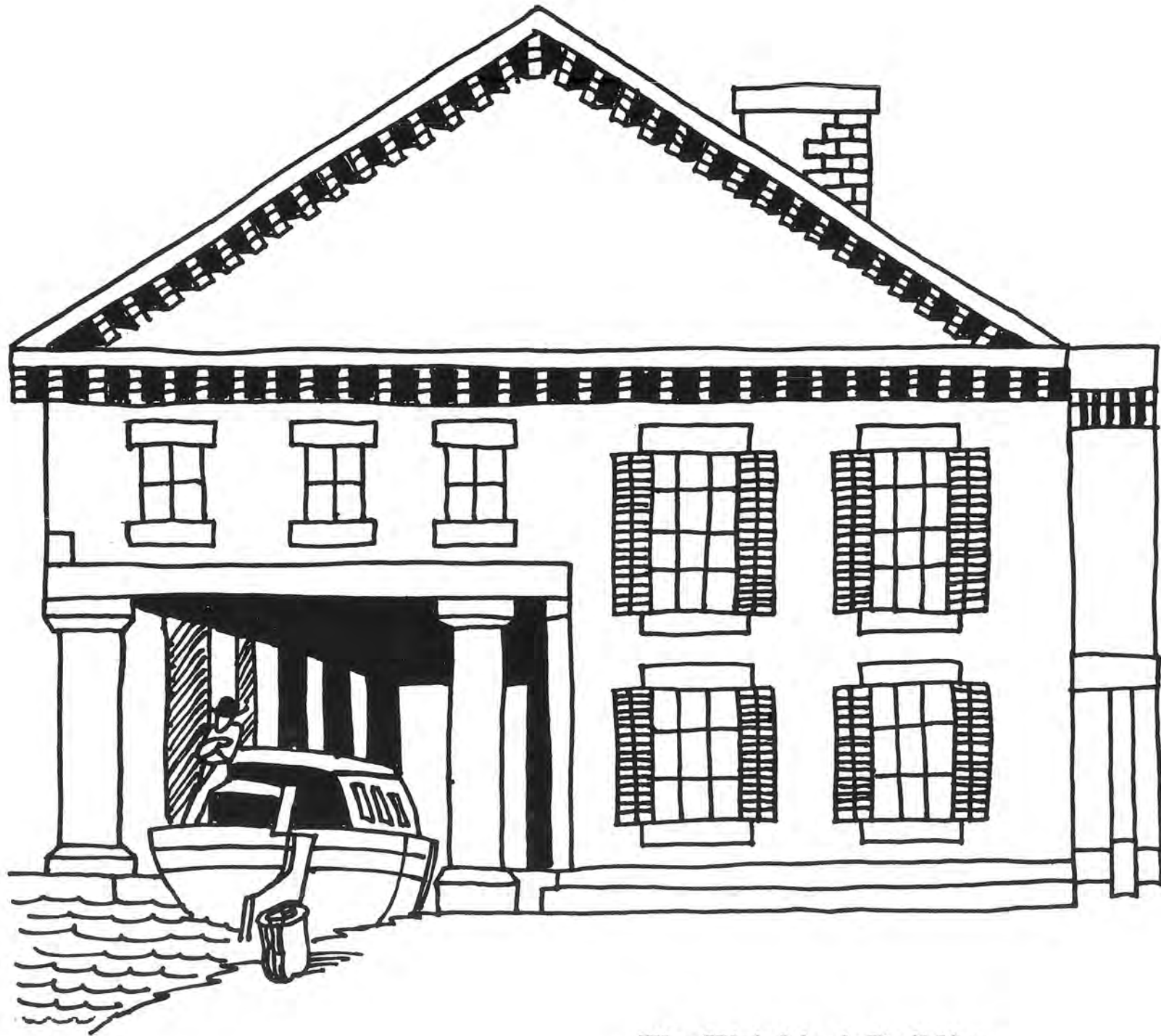
Along the Erie Canal.



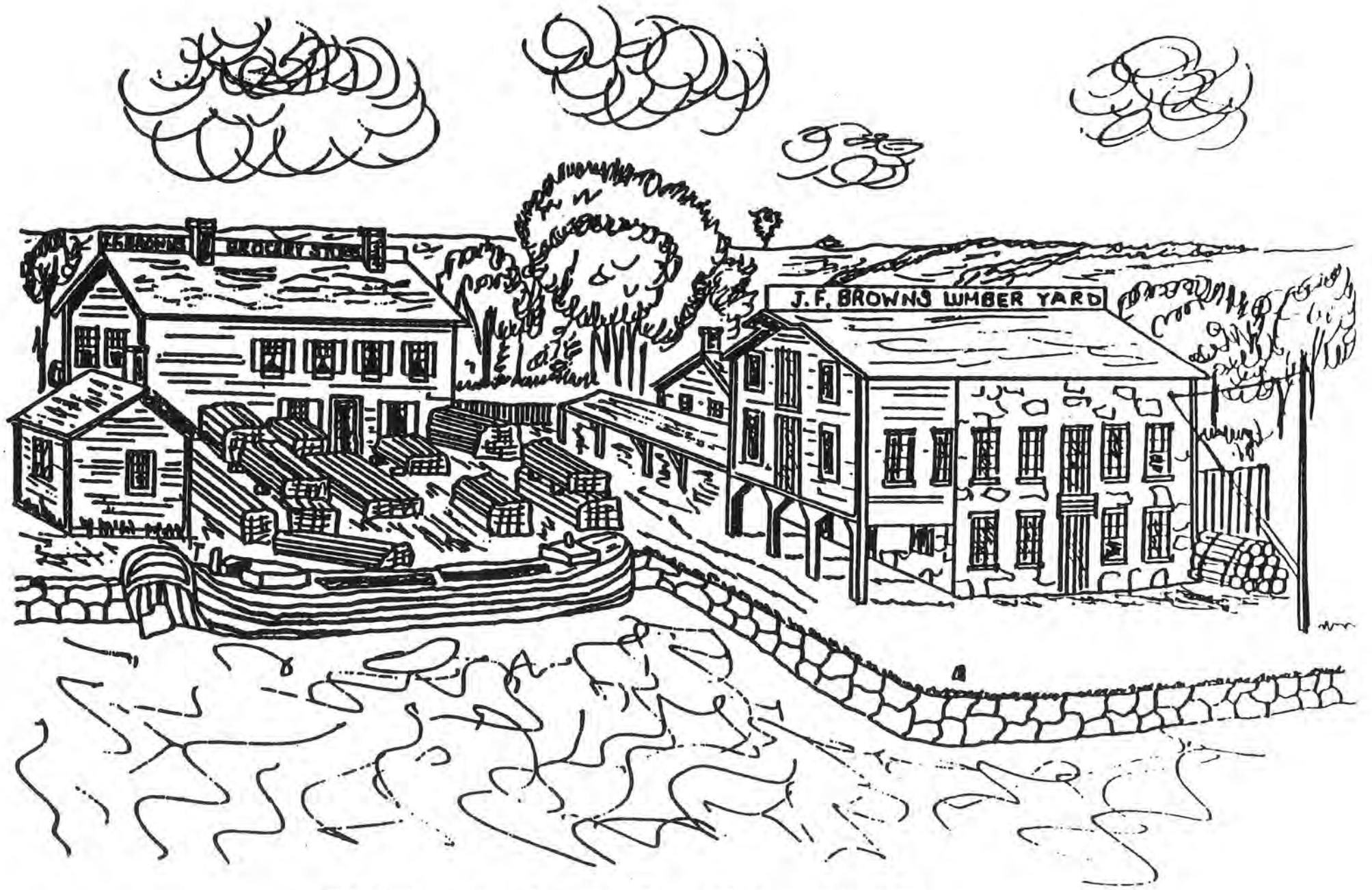
This is a grain elevator or storage building which was on the Erie Canal in Fultonville, N.Y.



A lock gate on the Erie Canal.



The Weighlock Building.



This lumberyard was located on the canal in Amsterdam, N.Y.

Boy and his mule.

