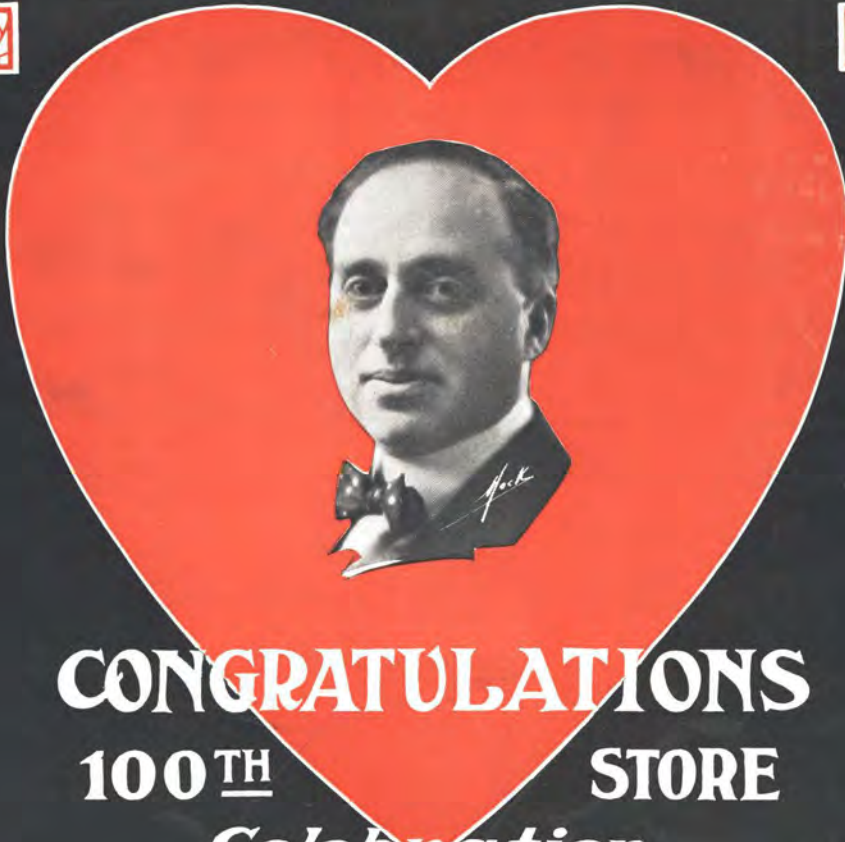


VOL. VIII

1927

NO. 10

THIS WEEK



CONGRATULATIONS
100TH STORE
Celebration

BIEBER
IN
ROCHESTER
AND VICINITY
Events in Advance

FROM SATURDAY, MARCH 5, TO SATURDAY, MARCH 12



Our New Service Department

was made possible by our many satisfied Nash owners. ☐ At this time of year all cars should be serviced. ☐ Drive your Nash in now.



—○○○○—
MORTIMORE MOTOR CAR CO.

336 EAST AVENUE

SERVICE DEPARTMENT, CAYFORD BLDG., NORTH UNION ST.

WATT'S DRY CLEANING CO., Inc.

SPECIALIZING IN LADIES' AND GENTLEMEN'S FINE GARMENTS

PHONE, GENESEE 614

Auto Delivery

322 COTTAGE STREET

“Get This Week in Rochester” by Mail

GENTLEMEN:

Enclosed please find (\$1.50) one dollar and fifty cents to cover my subscription for one year, beginning _____, 192__.

NAME _____

ADDRESS _____

BE ASSURED OF YOUR COPY EACH WEEK

The charge is for postage

*Our Best Wishes
to You
on Your Celebration*

MOSELEY & MOTLEY
MILLING CO.

TO MR. ALFRED HART,
MARCH 5, 1927

*Hearty
Congratulations*

ON YOUR
SUCCESS
AND
ONE HUNDREDTH
STORE
CELEBRATION

Ontario Biscuit Co.

T. W. STREET, Mgr.

**Our Heartiest
Congratulations**

to
MR. HART
ON HIS
100TH STORE CELEBRATION

May his future activities be as successful as they have been in the past

Atlantic Supply Co.

HART'S

100th Store Celebration

ARPEAKO PURE LARD

Makes Good Cooking Better

Thousands of Rochester housewives have purchased Arpeako Lard at our stores and have found that it makes the most flaky, tender, delicious pie-crust they ever tasted. Their fried foods are more digestible, and taste better as the true flavor of the food is brought out. And you save money by using Arpeako Lard. The pure lard oil is not extracted, thus making Arpeako Lard richer in shortening value.

ARPEAKO SLICED BACON

Arpeako Bacon is truly "The Peak of Perfection," and the new pound and half-pound cartons are as handy as they are attractive. The transparent window allows you to see just what you are buying. And everybody knows how delicious all Arpeako Products are.

NUCOA

Mothers like Nucoa because it is good for children—rich in Vitamin A. *Fathers* like it because it makes things taste so good. *Children* like it because Mother gives them all the bread and Nucoa they want. *Fine Cooks* like Nucoa because they know it makes all cooking delicious. The *Doctors* like it because they know Nucoa is pure, wholesome and easy to digest. *Hart Store Managers* like Nucoa because our best customers are so highly pleased.

Watch for Special Prices in All Hart Stores

THIS WEEK IN ROCHESTER

Vol. VIII

From Saturday, March 5, to Saturday, March 12, 1927

No. 10

HART HAS 100 SELF-SERVING STORES IN ROCHESTER

Opportunity did not rap at the door of Alfred Hart's store; Alfred Hart created opportunity, and by diligent and persistent endeavor he has raised himself to the dignity of Merchant Prince. Mr. Hart originated the self-serving grocery store idea, starting at 68 North Street, near Main, less than ten years ago. Rochester took to this novelty like a duck does to water. Success came so rapidly it made Mr. Hart do some tall thinking. If a self-serving grocery store was such a sure-fire hit in North Street, why not try it elsewhere? That was the question Mr. Hart asked himself. The answer came—from himself—immediately. Crowds visited the North Street store daily, and on Saturdays the doors had to be closed every other hour so the lone salesman could catch his breath.

Mr. Hart recalls with a smile, and also with gratification, his personal happiness at this turn to prosperity. It marked a new departure for the then young merchant, his previous efforts in the grocery line having been only of mediocre results. His cash-and-carry novelty having proved superior to the old-time practice of accounts and credits, with their dubious returns, Mr. Hart decided to broaden his activities, so he opened a second self-serving store, this time in Front Street. This also met with overwhelming success, and since that year—1917—Mr. Hart has been opening stores here, there and everywhere in Rochester until today he owns 100 stores in Rochester, the largest local chain in the world. The wonderful growth of Mr. Hart's self-serving enterprises is due principally to shrewd management and his unswerving policy to "please the public." This motto is maintained by resourceful buying of standard foods by trainload lots,

(Continued on page 11)



ALFRED HART

TEXAS' HUMOR

Some consolation in being No. 1. Texas Guinan, beautiful night club queen of Broadway, modestly confesses that "my first husband was the nicest husband I ever had."

Texas, it appears, has had three husbands of her own, but her specialty was a millionaire's son for frivolity.

Parents do not wear out slippers the way they used to years ago. Now slippers are worn out in dance floors. A different use was made of slippers in the days when boys and girls did not commit suicide.

Talking Pictures in Baptist Temple

Latest Sensation in Films Adds the
Human Voice to the Thrills of
Screen Marvels

Educational, picturesque and humorous numbers are represented on the two-hour phonofilm program, the much-discussed talking motion pictures, which are having their first Rochester presentation on the three nights of Friday, Saturday and Monday, March 11, 12 and 14, in Baptist Temple auditorium.

The phonofilm is not a phonograph. Voices, music—all sounds—are recorded accurately on the film at the same time the picture is displayed. Prominent men appear on the screen, seeming to address the audience from their own lips, among them being President Coolidge.

The reels to be shown here were chosen personally by Dr. Clinton Wunder in a recent visit to the De-Forest Phonofilm Studio, New York City. The varied program presents the Strand Theater Orchestra of New York City and Paul Specht with the Alamac Orchestra. Specialties include the famous "Bubble Dance" by Lillian Powell, a trip to Long Island and aesthetic dancing. Among operatic favorites is Eva Leoni, singing "Caro Nome" from "Rigoletto."

Blue laws are too darn blue at times. A Southern state has discovered a blue law in its books, which forced nurses to abandon their sick charges on Sundays. Cooks also were forbidden to prepare dinners, and a man who read a newspaper on that day was lost beyond redemption. A golfer who even thought of the links committed a crime.

Of every 100 Americans only 40 work, a survey shows. This is a high estimate from our point of view.



Copy for Advanced Events to be in by Wednesday.
No advertising of two inches or less taken for less than four insertions. Special rate per inch given for 100 inches to be used within one year.

Published by THE NEWS PUBLISHING COMPANY

R. E. FELLOWS, President

CHARLES F. BROOKS, Editor

46 STONE STREET MAIN 2145 ROCHESTER, N. Y.

PRINTED BY GILLIES LITHO. & PRINTING CO.

Mr. Hart's Wonderful Success

SUCCESS spells the name of Alfred Hart, owner of the greatest local chain of self-serving grocery stores in the world. Starting with more grit than money, ten years ago, Mr. Hart today celebrates the opening of his 100th store in Rochester. Three more stores, one located in Spencerport, another in Brockport, the third in East Rochester, attest to the marvelous growth of Mr. Hart's enterprise. The self-serving store is part of community life as much as is the City Hall. It is indispensable, and there is no end to its growth. Wherever a favorable location is found one of the famous orange-front stores, with its familiar turnstile and abundance of standard foodstuff, will be planted.

Self-serving systems were new to Rochester when Mr. Hart conceived the idea of a cash-and-carry store. This was in 1917. Mr. Hart did not have much money at that time, but he had sufficient to get a small start. Like the giant oak grows from an acorn, the chain of 100 self-serving stores grew from that baby, located in North Street, near Main. This baby soon attained maturity, and almost before Mr. Hart realized it, there was money enough in the treasury to open a second store. Never has Mr. Hart found it necessary to borrow a cent for a new location, or for new stock. Rochester found it convenient and profitable to trade at Hart Stores, and they began to appear here and there with mushroom rapidity. No section of the city was overlooked. Wherever one moved or drove, the orange-front was seen. And it will continue to be seen. Mr. Hart does not

intend to stop at this century mark. No, indeed. If a community looks like fertile soil there a Hart store will be planted.

The amazing success and prosperity of these self-serving stores attest to the shrewd foresight and wise judgment of Mr. Hart. Few men are willing to risk their business reputations on a novelty. The self-serving idea was new, and it was a question mark in the business world. But Mr. Hart took the chance, and today he is enumerated in the class of Rochester's greatest merchants. There is community satisfaction in the marvelous success of this man. Colossal buying at minimum quotations, coupled with economy in upkeep, with speedy turnover of stock, make for lower prices, and this frugality is passed on to the customers. In addition, coupons are given, entitling holders to fancy and valuable premiums. To illustrate the magnitude of this attraction alone, the Hart stores gave to their customers premiums valued at \$75,000 in 1926. Some melon to be cut each year.

We congratulate Mr. Hart, who is a self-made man, on his wonderful rise to commercial prominence and to wealth. The city has benefited by his prosperity.

Why Mrs. McPherson was Snubbed

WHATEVER may be thought of Amie Semple McPherson as an evangelist, Rochester Christians did not give her the greeting, nor the attention, her fame as a gospel worker entitled her to. Mrs. McPherson's character is unsullied, and she is doing much good in converting persons to the blessings of Christianity. The kidnaping episode should be blotted from one's memory. Remember, justice demands that a person be held innocent until proved guilty. One's judgment of that sensational incident in Mrs. McPherson's life is as good as another's, but remember—

"Let him who is without sin cast the first stone."

Preachers snubbed Mrs. McPherson. Not so six years ago when they were conspicuous at her meetings, and were very anxious to share with her the sunlight of her evangelism. Their absence from Convention Hall a week ago was suspiciously indicative of fear. We repeat—

"Let him who is without sin cast the first stone."

We Extend Congratulations

to you, Mr. Hart on the opening of your one hundredth store and the success that has made possible the splendid achievement.

We are proud indeed that the Betsy Ross Macaroni Products are in some measure a contribution to this event.

Quality Macaroni Co.
Rochester, N. Y.

***Congratulations
Mr. Hart
and Many Returns
of the Day***



George C. Buell & Co., Inc.
*Importers and Roasters
of Hart's Big Value Coffee*

New Car Exhibited at Cadillac Store

LaSalle, Companion-car to the Cadillac, Makes Its Appearance in Six Types

Greeting to the new LaSalle, companion-car to the Cadillac, and which will be on exhibition at the Spring Salon of the Mabbett Motor Car Company, in its showrooms, 157 Court Street, starting today (Saturday) and continuing to March 12. The showrooms will be open nights until 10 o'clock. Much curiosity was evinced when the Cadillac company announced it would place in the market a new car, made entirely within the Cadillac plant, but entirely different from that design. The LaSalle is by no means a Baby Cadillac, but is of Cadillac quality. Six body types are on exhibition.

The LaSalle is equipped with the same (Cadillac) type of ninety-degree, V-type, eight-cylinder engine, used by the Cadillac since 1914. This new car is lighter in weight than the Cadillac, has a smaller (125-inch) wheel-base, but in coachcraft, luxury of appointments, riding comfort, it classes nicely with the Cadillac. For four years the Cadillac has been designing this car, with a view of making it a companion to the Cadillac, but not a junior Cadillac. That is as far as the relationship goes. In the six body types are a 4-passenger phaeton, 2-passenger roadster, convertible coupe, 2-passenger coupe, 4-passenger Victoria, and 5-passenger sedan. Visit this Spring Salon, and see this latest marvel.

Hart's 100th Store

WILL BE
A SWEEPING SUCCESS
WITH

***Rochester
Maid
Brooms***

Compliments
**LOUIS SCHWARTZ
BROOMS**

100 STORES

100 STORES

Hart's 100th Store Celebration!

A GREAT LOCAL CHAIN OF GROCERY STORES

Offering Nationally Advertised Food Products at Cut Prices



HART'S

Excel because they undersell

HART'S

Give the best for the least

HART'S

Are the biggest retail distributors of food products in the city

HART'S

Gave \$75,000.00 in premiums to customers last year



WATCH THE DAILY PAPERS

For Special Special Cut Prices and Celebration News!

100 STORES

100 STORES

The Largest Food Section ever printed in a Newspaper for One Advertiser, will be

THE HART STORES SECTION *of Tuesday's Times-Union*

We congratulate Alfred Hart on the success which has made possible—and necessary—100 Stores

Rochester Times-Union
Always First in Food Advertising

Bill McInerney a Private Detective

Former Headquarters Expert Opens Bureau in Union Trust Building to do General Detective Work

Once a detective always a detective. The lure of seeking criminals, or of investigating some deep mystery, is irresistible, and few escape its clutches. Detectives retire, and try other avenues of activity, but eventually they drift back into the beaten path, made famous by Pinkerton. The latest to do so is none other than our genial citizen, William K. McInerney, better known as Bill, who has opened the McInerney Detective Bureau, 601 Union Trust Building. In company with Bill McInerney will be a noted secret service man, with nation-wide connections as a detective, private and public. This bureau's specialty will be general, commercial, industrial and criminal investigations, recovery of lost and stolen valuables, and it promises to solve any mystery, domestic or commercial.

Bill McInerney needs no introduction to Rochester. When he retired from active police service, about four years ago, his superiors expressed re-

gret. But McInerney had served sixteen years in detective work, and prior to that many years in a uniform, and his arduous attention to work affected his health to a point where rest was essential. Now his health has been restored, and he is mentally and physically capable to do a heavy day's work, with overtime if necessary, and not be distressed. The experience McInerney had in police work will be of value to him in his private capacity, and we would not be surprised to hear at any time that he has been called in to help his former comrades clear up a mystery.

There is not a notorious criminal in the United States who is a stranger to Bill McInerney, and his major duties while in the service was to spot the crooks before they got started here. To illustrate McInerney's familiarity with pickpockets and their habits, it is only necessary to point to the time when McInerney was registered at a Philadelphia hotel, and he recognized a woman in the lobby as a clever pickpocket. Bill kept his eye on her, and finally two noted shoplifters joined her. McInerney approached the trio, introduced himself as a pickpocket from Chicago, and invited his new acquaintances to luncheon in a restaurant. Wise as crooks are, they fall at times, and these three spilled their secrets into

McInerney's ears, after which he took the whole caboodle to Police Headquarters. This made a sensation in Philadelphia, and McInerney was warmly complimented for his shrewdness.

No wonder there is a crashing noise in the radio set occasionally. There are 733 broadcast stations for public entertainment, and a grand total of 18,000 sending stations altogether, amateur and professional. When all these stations start functioning Mr. Static finds himself in a dilemma.

The first robin will trill and thrill in Irondequoit March 17th. That is the date it usually makes its melodious bow.

Florenz Ziegfeld may send for some of those Chatterbox Revue dancers if they will assure him they will wear more clothes, as New York City is experiencing a reform.

BIG WEEK FOR WHEC

An eventful week is planned by Station WHEC, beginning Sunday, March 6, and a number of new programs are to be started, according to Milton G. Hall, manager. There will be many special features.

TELL 'EM YOU SAW IT IN "THIS WEEK"



SERVICES IN CHURCHES



833 EAST AVE. (Near Goodman)

UNITY HOME of TRUTH

Sagamore Ball Room

SUNDAY

11:00 A. M., Morning Worship and
Address, Gloria Ruth Williams

WEDNESDAY

8:00 P. M., Mid-week Service and
Address, Gloria Ruth Williams

BETHEL

Full Gospel Tabernacle

N. GOODMAN AND RIPLEY STS.

Where the old-time Gospel is preached
Sunday Services, 10:45 A.M., 7:45 P.M.
Services are Inspiring, Evangelistic,
Helpful

Salvation, Healing, The Baptism of the
Holy Spirit

The second coming of Christ is preached
**NO LAW BUT LOVE—NO CREED
BUT CHRIST**

Rev. Harry Long, Pastor.

OPERA STARS AT TYLER'S INN

All the world loves a singer. All singers love the world. So it's an even break. Many of Rochester's celebrated vocalists gave that pretty little village, Pittsford, a taste of grand opera recently when the Rochester Opera Company held a festival in Tyler's Inn. The opera stars were celebrating a wedding, in which two of their members were happily involved. The program of festivities was impromptu, and the Inn echoed and re-echoed with the superb voices of this group.

Yes, we have no Springtime.

OFFICE APPLIANCE SHOW AT CHAMBER OF COMMERCE

The eighth Office Appliance Show of the Chamber of Commerce will open Tuesday (March 8) morning in the Chamber auditorium and will continue through Thursday evening. This show will carry office equipment displayed by twenty-six of the leading manufacturers in Rochester and the East.

The show will take place under the direction of the Industrial Management Council of the Chamber, of which A. E. Crockett is manager. Arrangements for the show are in the hands of the Cost Accountants' Group of the Council, of which B. J. Bartz is chairman.

Plymouth Spiritualist Church

Cor. PLYMOUTH AVENUE AND TROUP STREET

Services Sunday, 8 P. M. Sermons, Music and Messages

Wednesday Evening Message Service devoted to messages from departed friends and investigation of problems relating to life beyond the grave

Cordial welcome extended to all from any church or no church

We strive to help all. Our teachings help all intelligent religious beliefs and harm none

COME, HEAR, INVESTIGATE FOR YOURSELF

Rochester Boys Make Good on Stage

Louis DeLeo and Louis Goetzman of
Fagan's Orchestra the Big Hits
in Keith's in New York

Two Rochester boys, Louis DeLeo, son of Deputy Sheriff Mike DeLeo, and Louis Goetzman, of St. Paul Boulevard, are scoring a tremendous hit with Ray Fagan, famous orchestra leader, in the huge Keith Circuit. They played in Keith's Royal, 149th street, New York, and newspaper critics lauded Fagan, DeLeo and Goetzman for their versatility with musical instruments. They also played at Newburgh, N. J., and soon will appear for a week's engagement at The Temple theater, Rochester, when they are assured of a cordial home greeting. Miss Isabelle Emery, a charming dancer, with a promising footlight future, also belongs to this outfit.

The success of young DeLeo and Goetzman on the professional stage, and in competition with more celebrated jazz players, was very pleasing to their numerous friends in Rochester.

They never die in Oswego county. One family of eight children up there aggregate 620 years in age, an average of 77 1-2 years.

PHILADELPHIA

CHESTNUT AND 39th STREETS

HOTEL PENNSYLVANIA

Fire-proof

Unrestricted Parking

Garage

600 Rooms

500 Baths

Rooms with running water
from \$2.50 per day

Rooms with Private Bath
and Shower
from \$3.50 per day

Food and Service the Best

Near West Philadelphia Station
Pennsylvania Railroad
University of Pennsylvania
Franklin Field



OSCAR W. RICHARDS, Manager

TELL 'EM YOU SAW IT IN "THIS WEEK"



WHERE TO EAT

Dine at Home on East Avenue—At the Alexandra

We wish to announce that the Delicious \$1.25 Dinner served only on Sundays at the EAST AVENUE COFFEE SHOP is served nightly in our new restaurant, East Ave. at Alexander St., from 5 to 8 P. M.

Telephone—Stone 2640

Bridge Luncheons \$1.00

Alexandra

Special Menus Arranged

The Pine Tree

Luncheon, 11:45 to 2:00
 Afternoon Tea, 2 to 5:30
 Dinner, 5:45 to 7:15

\$1.00 STEAK PLATE ON
 MONDAY AND THURSDAY
 EVENINGS

140 EAST AVENUE
 PHONE, STONE 6041

VEGETARIAN—HEALTH PROTECTION

100% Whole Wheat Products Tasty Cooked Vegetables
 Open 7:00 A. M. to 7:15 P. M.
 VEGETARIAN CAFETERIA - - - - - 157 FRANKLIN STREET

The Sea Shell Sea food Restaurant

SPECIALS { Tenderloin Steak Dinner..... \$1.10
 White Fish Dinner..... 1.00
 Chicken Dinner..... 1.25

Tasty Noon Lunches, also Sea Foods to be taken out
 410 Main St. E. F. A. Frost, Mgr. Stone 420

The Fern

Frank Jungwirth, Prop.
 Next to Eastman Theatre
 POPULAR PRICED RESTAURANT
 Theatre Parties
 SEA FOODS, STEAKS, CHOPS
 MAIN 7823 437 EAST MAIN ST.

DEMAND FOR LAUNDRY MACHINERY

Rochester-made machinery is washing and drying clothes in far-off Europe, Asia and Africa. The American Laundry Machinery company, manufacturers of a new type of washing-drying process, is working overtime to meet the demand for its new device. Many carloads of these machines are being shipped to Europe, and the company has orders from cities in the United States to keep its shop busy.

FOR THE LENTON SEASON—See that you get your share of sea-food

Bennett's Raw Oysters contain an abundance of Vitamin C, an essential food element needed by the city dweller
 The Oyster is also rich in Iodine, containing about 200 times more of this element than other staple foods. Iodine is needed in the Great Lakes region, because the water and soil are poor in Iodine content and because it is needed to prevent goitre and other disorders of the Thyroid Gland
 Bennett's Oysters are nourishing and non-fattening
THEY ARE ALSO SAFE AND CLEAN AND MAY BE EATEN IN QUANTITY
 Also Live Lobsters, Shad Roe and Bacon, Fresh and Salt Water Fish, Steaks, Chops, Mushrooms and Salads

Bennett's Oyster House

78 MAIN ST. WEST
 TEL. MAIN 7760

Open 11 A. M. to 12 Midnight, including Sunday

A seafaring expert says the Majestic and Leviathan are the greatest of steamships. He never heard of the J. D. Scott and the Windsor.

An English author, Winston Churchill, has written a war history, in which he proves that the Allies blundered before Uncle Sam stepped in, and that the Allies crippled themselves by their errors. Germany, he

claims, made the biggest mistake by provoking Uncle Sam into the fight. That settled it. Evidently we won the war.

Who ever gave the foxtrot its name never saw a real foxtrot, we are willing to wager. At least, the foxes up in Livingston County's hills do not trot like the flappers in Monroe County's dance halls.

TELL 'EM YOU SAW IT IN "THIS WEEK"

TYLER'S INN

PITTSFORD

"Famous for Over a Century"

Announcement

Dance Hall and Dining Room open for engagement on

MARCH 17, ST. PATRICK'S DAY

Phone, Pittsford 118

Under Direction of Cowan of Syracuse

Kolb's Inn and Poultry Farm

CHICKEN, FISH, STEAK AND DUCK DINNERS FROM 1 TO 10 P. M.

Special After-Theater Lunches. Music from 9:30 to Closing by Valentine's Red Jacket Orchestra

A LA CARTE ORDER AT ANY TIME

During November Clambakes and Duck Dinners from 2 till closing, on Sunday

F. J. KOLB, Prop.

Special Parties on Short Notice

Genesee 4926

HART HAS 100 SELF-SERVING STORES IN ROCHESTER

(Continued from Page 3)

thereby assuring a minimum of cost, and rapid turnover of all commodities.

The first store was started on pin money, and its first sister—or brother—was not introduced until the cash was available. No. 1 store produced the profits to bring No. 2 into life, and these two stores jointly made it possible for the opening of the third store. That continued to be the Hart method. The stores in existence created funds for newer locations, and today it is no longer a problem of raising the necessary money for more stores, as the 100 units are yielding profits in excess of the fondest anticipations. Mr. Hart will not call a halt in opening new stores, his business ambition being to establish one of his orange-front stores wherever there is room and a demand. Location is his greatest problem. The people seem to flock to his famous self-serving establishments, which is positive proof of quality and quantity. Not one store of the Hart chain has been written in the wrong side of the ledger. Economy

in buying and in upkeep make for success.

An added attraction to all of Mr. Hart's stores was the premium idea. Thousands of families save the valuable coupons, and in 1926 premiums to the value of \$75,000 were distributed. Silverware, kitchen utensils, rugs, lamps, furniture, wearing apparel for men and women, toys, sporting goods, carts, sleds, etc., about 300 different articles being in the assortment, are in display in the premium parlors, 29 Market Street, which are visited daily by throngs of coupon holders. So immense is the Hart grocery business growing that the mammoth warehouse on a private railroad siding in Portland Avenue is to be doubled in size. All the Hart stores are supplied twice a week with new stocks.

Aside from his tremendous business enterprises, Mr. Hart is personally interested in many charitable institutions. The welfare and comfort of orphans and dependent aged persons absorbed much of this busy man's time, but he finds personal pleasure in making others happy. Mr. Hart has served many years as president of the Jewish Orphan Asylum, and those youngsters, made bright and cheerful

by the generosity of Mr. Hart and others, sing the praises of their benefactors many times a day. Also, Mr. Hart is intensely interested in the affairs of his church, being head of the congregation, and president of the Men's Club. These are part of Mr. Hart's local philanthropies. Nationally he is known as a giver, and the International Zionist movement has also benefited by his assistance.

Spring is only one ton of coal away.

Rochester Rug Works

182 ATLANTIC AVENUE
CHASE 4861

CARPET CLEANING and RUG
MAKING

YOU WANT

Pure Drugs, Courteous Treatment
Fair Prices
Your Prescription Filled Properly

TRY
KLEINHANS' PRESCRIPTION
DRUG STORE

895 CLINTON AVE. N., Cor. Clifford

Culver Road and Iroquois
Street, Sea Breeze
Opp. Fire Station

Dine and Dance at the COLONIAL CLUB

PHONE
Stone 6202

The Finest Dance Music by Hess Colonial Orchestra on Tuesday and Saturday Evenings

WE SPECIALIZE IN CATERING TO PRIVATE PARTIES AND DANCES

Under Personal Management of Mrs. L. C. Lindsey

TELL 'EM YOU SAW IT IN "THIS WEEK"

INVESTIGATIONS BY EXPERT INVESTIGATORS

McInerney Detective Bureau
601 Union Trust Bldg. Main 3457
WILLIAM K. McINERNEY
Formerly with the Rochester
Detective Bureau

CRIMINAL INDUSTRIAL COMMERCIAL DETECTIVE WORK
Expert Investigators
McINERNEY DETECTIVE BUREAU
601 UNION TRUST BLDG. Wm. K. McInerney

AT THE THEATRE



BETTY DELMONTE in
"Black and White Revue" at Gayety

LYCEUM THEATRE

All This Week—Matinees Wednesday and Saturday

GLENN HUNTER

In John Van Druten's Play

"YOUNG WOODLEY"

Staged by Basil Dean with a great cast, including
Mary Servoss, Grant Stewart, A. E. Anson, Philip Tonge
Direction George C. Tyler and Basil Dean

SEATS NOW—Prices, including tax, Evenings, 50c,
\$1.10, \$1.65, \$2.20, \$2.75; Wednesday Matinee, 50c, \$1.10,
\$1.25; Saturday Matinee, 50c, \$1.10, \$1.65, \$2.20

TWICE DAILY GAYETY 2:15 8:15 P. M.

COLUMBIA BURLESQUE

The Greatest Aggregation of Entertainers Ever
Assembled for a Burlesque Tour

JIMMIE COOPER (Himself)

and His Original

Black and White Revue

70—PEOPLE—70 35 WHITE ARTISTS
35 COLORED STARS 5—Crackerjacks—5

11—Jazzers of Jazz—11

8—Real Creole Beauties—8, and

Butterbeans & Susie, Okeh Race Record Stars

Sandy Ackland, Premier Bag Piper, and his

16—Royal Scots—16

16—Beautiful White Dolls—16

Special Midnite Show Friday, Mar. 11, 11:30 p. m.

KEITH-ALBEE THEATRE

Continuous, 1 to 11 P. M.

Week of March 6

JOHN OLMS

CO. LORRAINE

NEIL, ALLEN and CANFIELD

PRINCE NYARI & ORCHESTRA

BERT HANLON

SIX ROCKETS

Supper Show Begins at 6:30

Matinee Prices, 30 and 20 Cents

Nights, All Seats 50 Cents

EASTMAN THEATRE

Direction of Eric Clarke

(Week March 6, Except Thursday Evening)

MARION DAVIES

In a sparkling comedy romance taken from the famous
musical comedy

"THE RED MILL"

With Owen Moore and Snitz Edwards

"Peer Gynt," Suite No. 1 - - - Grieg
Eastman Theatre Orchestra

Our Gang Comedy, "Seeing the World"

"By the Zuyder Zee"

Eastman Theatre Company

The
ODENBACH
Coffee Shoppe

Stop at the Baked Goods Counter in the Coffee Shoppe, where you will find many delicious things to take home. All baked in our own Coffee Shoppe Bakery, and the same as we serve at table.

- Nut Jumbles
 - Molasses Cookies
 - Sugar Cookies
 - Pecan Wafers
 - Cup Cakes
 - Jelly Rolls
 - Date and Nut Loaf
 - Chocolate Squares
 - And many others
- SOUTH CLINTON AT MAIN

REGENT

Entire Week March 6

REGINALD DENNY

In an uproarious comedy

"The Cheerful Fraud"

Salvatore Scala

The Banjo King

MABEL NORMAND in

"Anything Once"

CORINTHIAN

Mutual Burlesque

Week Commencing
Monday, March 7th

Prepare to see Sam Morris'
Big Parade of Burlesque

"Step Along"

Featuring HARRY JACKSON
That Funny Dutch Dialect
Comedian, and

AGNES NICHOLS

That Perfect Form Queen of
Syncopation

And Chorus of Beautiful Girls

Riviera

LAKE AVE. and FLOWER CITY PK.
Children, 15c Adults, 25c

Two Shows Every Evening, 7 and 9

Saturday and Sunday

Continuous, 2 to 11 o'clock

MOTION PICTURES

PICCADILLY

Sunday-Wednesday

The famous stars of "The Big Parade"
JOHN GILBERT and RENEE ADOREE

In a throbbing Old World Romance

"The Show"

Comedy, "Howdy, Duke"
Felix the Cat, "Dines and Pines"

Thursday-Saturday

"Wolf's Clothing"

With MONTE BLUE and
PATSY RUTH MILLER

The
ODENBACH
Restaurant
Table d'Hote
Luncheon
85c

Every day from 12 to 2 o'clock the Odenbach Restaurant will serve a Table d'Hote Luncheon. Ask for the Special Luncheon Card and you will find a splendid assortment of delicious dishes to select from.

(Also a la Carte Service)

Our Table d'Hote Dinner is served every evening, 6 to 8:30 at \$1.75.

SOUTH AVE. AT MAIN

YOU ARE INVITED TO THE EIGHTH ROCHESTER OFFICE APPLIANCE SHOW

CHAMBER OF COMMERCE ASSEMBLY HALL, MARCH 8, 9, 10, 1927

There is nothing mechanically more interesting, more marvelous than our modern office machines.
Each year brings new wonders in this line

INDUSTRIAL MANAGEMENT COUNCIL, Rochester Chamber of Commerce

Open 11:30 to 10

Orchestra Concert Each Evening

EVENTS in ADVANCE

Saturday, March 5

Card party at home of Mrs. Alfred G. Nudd, 383 West Avenue, this evening for benefit of Daughters' Lodge.

Sunday, March 6

Christian Science Society services, Hotel Seneca, 11 A. M. Subject, "Man." Public invited.

Men's mass meeting in Y. M. C. A. gymnasium this afternoon. Dr. A. J. Reed will speak. All men are welcome.

Monday, March 7

Rochester Community Players will present "Ensnared," a new play, at the Playhouse, Clinton and Meigs, tonight. Mrs. Ray Finucane is president of the Players. "Ensnared" was written by George L. David, a Rochester newspaperman.

Concert in South Congregational Church by Freeman Little Symphony Orchestra, Herman Sarachen, conductor, at 8:15 o'clock tonight. This is a thirty-piece orchestra. The concert is held under auspices of the Congregational Young People's Society, known as The Ever-Ready Society. Raymond Fox, baritone, and Eugene Raepffel, cellist, are also on the program. Public is invited to this concert.

Whitcomb H. Allen, superintendent of the S. P. C. C., will speak before Kiwanis Club tonight.

Fashion Revue by beautiful models in The Sagamore main dining room today, under auspices of the Mally Company, East Avenue.

Tuesday, March 8

Rochester Community Players will present "Ensnared," a new play, at the Playhouse, Clinton and Meigs, tonight. Mrs. Ray Finucane is president of the Players. "Ensnared" was written by George L. David, a Rochester newspaperman.

Unity Class of Cornhill M. E. Church will hold its annual banquet in the Samovar, Alexander Street, at 7 P. M.

Illustrated lecture by Dan McCowan of the Bureau of Commercial Economics, Washington, D. C., in Central Y. M. C. A. assembly room tonight, 8 o'clock. Mr. McCowan is an authority on plant, bird and animal life.

Executive Committee of Federation of Churches meets today.

Lecture at City Normal School today. Program: "The Relation of Women in Industry to the Accident Ratio," by Nellie Schwartz, director of the Bureau of Women in Industry, State Department of Labor.

Parent-Teachers' Association of School No. 4, Brighton, dance.

Ernest R. Clark will lecture in East High assembly room at 8 P. M. Subject, "Italy."

Wednesday, March 9

Rochester Community Players will present "Ensnared," a new play, at the Playhouse, Clinton and Meigs, tonight. Mrs. Ray Finucane is president of the Players. "Ensnared" was written by George L. David, a Rochester newspaperman.

Yerkes-Couchman Auxiliary Silver Tea at home of Mrs. George Holzschuh, 23 Benton Street, 2:30 P. M.

Annual concert of the Big Brothers and Sisters at Masonic Temple Auditorium this evening, 8:15 o'clock. David Kahn, celebrated pianist, on the program.

Educational lecture on "Social Hygiene" by Dr. M. May Allen in room 2-G of the Temple Building this afternoon, 2:30 o'clock.

Thursday, March 10

Rochester Community Players will present "Ensnared," a new play, at the Playhouse,

Facials, Marcelling, Shampooing

PHONE, STONE 1098

Delia Wahl Beauty Parlor

550 LINCOLN-ALLIANCE BLDG.

Delia Child, Operator

Mr. Mullin, Barber

Women and Children a Specialty

Clinton and Meigs, tonight. Mrs. Ray Finucane is president of the Players. "Ensnared" was written by George L. David, a Rochester newspaperman.

North Greece Parent-Teachers' Association will present a three-act play, "Patty Makes Things Hum," this evening at the Greece Memorial Hall in Ridge Road.

Friday, March 11

Rochester Community Players will present "Ensnared," a new play, at the Playhouse, Clinton and Meigs, tonight. Mrs. Ray Finucane is president of the Players. "Ensnared" was written by George L. David, a Rochester newspaperman.

Phonofilm produced in Baptist Temple auditorium this evening, 8 o'clock. Charles H.

B. A. SPEEDY

*Hat Cleaning Shop - Shoe
Shining Parlor*

216 COURT ST.

Near Clinton So.

SANDING

WAXING

Hardwood Floors

Let our experts lay and finish
your new floors

Old Floors Made to Look Like

NEW

We furnish our power anywhere
and have the best equipment in
the city

CALL STONE 1134

SCRUBBING

LAYING

CALL STONE 357-358

WE MOVE EVERYTHING BUT THE WORLD

RAZ

DELIVERY

We make two
daily trips to
Hornell :: ::

Marriott's French Dry Cleaning Works

Men's Suits Cleaned and Pressed..... \$1.00

Ladies Plain Dresses Cleaned and Pressed..... 1.50

Genesee 5108

414 GENESEE STREET

Genesee 5109

COGSWELL'S JERSEY MILK

Tuberculin Tested Grade "A"

A. W. KORTS' SOLE DISTRIBUTORS

Monroe 674

TELL 'EM YOU SAW IT IN "THIS WEEK"

Sharp, organist, will give a recital, starting at 7:30.

Joint automotive meeting of Rochester Engineers' Society and A. S. M. E. in The Sagamore Solarium, 8 P. M. Speaker, J. R. Cantley, engineer of the Bendix Brake Company, South Bend, Ind. Subject, "Four-wheel Brakes." There is much controversy over four-wheel brake construction.

Saturday, March 12

Rochester Community Players will present "Ensnared," a new play, at the Playhouse, Clinton and Meigs, this afternoon and evening. Mrs. Ray Finucane is president of the Players. "Ensnared" was written by George L. David, a Rochester newspaperman.

Phonofilm produced in Baptist Temple auditorium this evening, 8 o'clock. Charles H. Sharp, organist, will give a recital, starting at 7:30.

American Order of the Square, 198 West Main, pedro party this evening for benefit of Aid League. Public invited.

Chief Quigley Not to Return to Office

Chief Joseph M. Quigley of the police force is seriously ill, and probably will seek retirement on pension instead of trying to return to his responsible position. The chief suffered from acute indigestion, and also had a heart attack. On account of his matured age—69—he may seek the comforts of retirement. He is entitled to \$2,500 a year pension. Who will succeed Chief Quigley in that position is a question. Inspector Al Killip is acting chief, but that does not imply that he will be retained there. A few years ago the late George Aldridge picked Inspector Fred Young for chief, but Mr. Quigley brought powerful influence to prevent a change. Mr. Aldridge having died, it is not certain that Inspector Young has the advantage. Friends of Captain Andy Kavanaugh look for him to be made chief, as Mayor O'Neil, who really will make the choice, is said to be proud of the captain.

Bedroom Weather Fixed by Experts

Keep the bedroom window open. A sleepingroom with still air, and no ventilation, is a poor life insurance risk. Fresh air is essential for health. Farmers are strong and hardy because they live in the open. Physicians recommend pure air as a cure for tuberculosis—the only cure. Lungers in the woods sleep in outdoor porches, or in tents. Without fresh air they would die. All human beings need fresh air. Take a convict, for example, and he shows the pallor of impure air and is wan from confinement. The person living at home, or in a hotel, apartment house or flat can

get fresh air nights, but few do. A majority of persons snuggle into a bed uncomfortably heated.

Ventilating engineers, and physicians, experimented, and report that adults at rest are most comfortable with a room temperature of 68 degrees, relative humidity of 42 per cent, and also that slight air motions are desirable. Air motion cannot be obtained without open windows unless an electric fan is used. A temperature of 68 for the sleepingroom is too warm for the average person. Solid

rest cannot be enjoyed in overheated rooms. Better to have the bedroom temperature at 50 degrees than at 68. Some persons sleep soundly in rooms where water freezes, and snow covers the floor or bed. Physicians agree that for adults at hard work a low temperature is the best. Children, too, enjoy a cool bedroom.

"The American man is God's best handiwork" says Mme. Schumann-Heink. This should be conspicuously pinned on the wall, as some men may not know it.

ALONG EAST AVENUE

GEO. A. MILLER & CO.
137 EAST AVENUE
Trunks and Leather Goods

ABNER ADAMS CO.
Floors 43 EAST AVE.

Whittle's
38-40 EAST AVE.
44-46 Main St. E.
Candy Soda
Chocolates
Lunches Served from 12 to 2 at
Both Stores

Edyth Albright Ann Weidenborner
EDYTH-ANN
BEAUTY SHOPPE
"Beauty Is Creative"
Marcelling, Water Waving a Specialty
PHONE, STONE 1031
332 LAWLESS BLDG. 80 EAST AVE.



Exclusive attention given to the examination of the eyes, and the prescribing and furnishing of glasses
B. B. CLARK, THEODORE MARTH Optometrists
B. B. CLARK OPTICAL CO. 12 Gibbs St. Stone 6592
Mr. Clark was associated for years with the late Mr. Bestor under firm name of Clark & Bestor

If Your Competitor Has an ELECTRIC SIGN

which lends a successful air to his business, it is up to you to follow suit or your prestige will be lost in the shuffle for business.

PHONE US

We Will Gladly Furnish Designs and Estimates
Absolutely Free

BE UP AND DOING

Main 3960

Rochester Gas and Electric Corporation
89 East Avenue

ON STAGE AND SCREEN

PICCADILLY

That famous co-starring team of John Gilbert and Renee Adoree, which took the world by storm in "The Big Parade," are brought together in "The



JOHN GILBERT in "The Show" at the Piccadilly Sunday to Wednesday

Show," at the Piccadilly Sunday, March 6, for the first four days of the week.

"The Show" takes its name from a Budapest side show in which Gilbert appears as Cock Robin, a bold, swanky adventurer, acting as "barker." In the show is Salome, a dancing girl. Lionel Barrymore and Edward Connelly are in prominent parts.

Supplementary features for the opening days include a Lupino Lane comedy, "Howdy, Duke," a Felix the cat cartoon, called "Dines and Pines"; Piccadilly News Pictorial and a musical entr'acte by Arthur Newberry's Piccadilly Jazz Orchestra.

Thursday and the week-end will bring a change to light comedy with "Wolf's Clothing," a sparkling comedy of New York night life, featuring

Monte Blue and Patsy Ruth Miller as the principal attraction. Additional screen numbers on the week-end bill will include a comedy called "High Sea Blues," an Aesop Fable and the usual assortment of news reels.

REGENT

Comedy rules the Regent screen again the week of March 6 with Reginald Denny in "The Cheerful Fraud" as the principal film feature.

In this comedy Denny plays the part of Sir Michael Fairlie, a young globe trotter who returns to England planning to stay just long enough to plan another globe trot, but instead remains to fall in love with the girl he met in a rainstorm. He learns her name is Ann Kent and that she is

secretary to Mrs. Bytheway, a new rich social climber.

Denny has the assistance of a cast of comedy players in Otis Harlan,

DEAL WITH KASDIN

501 EAST MAIN STREET
CIGARETTES, CANDY, STATIONERY
CIGARS, ETC.

MASSAGE

"Good for what ails you"

94 ELM ST. Main 8222
Opposite Richford near Seneca and
Sagamore Hotels

"Jimmy Slater"—Entertainment Service

Any time, any place, any number of entertainers, any number of musicians for any occasion

GENESEE 4971

New Windsor Hotel

Cer Clinton Ave. N. and Central Ave. OPP. NEW YORK CENTRAL DEPOT
Phone, Stone 3659 ROCHESTER, N. Y. F. E. McCue, Prop.

ANY THING ANY WHERE ANY TIME SAM GOTTRY CARTING CO.

Office
Powers Arcade

Phone
Main 1412

Stables
47 Parkway

Carpet and Rug Cleaning

Oriental and Domestic Rug Washing

The Gray Carpet Cleaning Works

251 SANFORD ST.

Chase 1864

STONE 2559

JACK WISHMAN'S "HOUSE OF QUALITY CIGARS"

MAIN 1457

IMPORTED CLEAR HAVANA AND DOMESTIC CIGARS
BOX TRADE MY SPECIALTY

CLINTON AVENUE SOUTH AND COURT STREET

CIGARIST—TWO STORES

89 MAIN STREET WEST

TELL 'EM YOU SAW IT IN "THIS WEEK"

Emily Fitzroy, Gertrude Astor and Charles Gerrard. Gertrude Olmstead is leading woman.

The supplementary program also takes on a comedy touch with Mabel Normand in "Anything Once."

Stage feature is Salvatore Scala "The Banjo King," considered one of the greatest exponents of the banjo.

"The Red Mill" to Grind at Eastman

Sweet Marian Davies Will be Seen as a Dutch Maiden, Who Loses Her Heart to an Irishman

Marian Davies drops the smart boyish bob and the lavish costumes of "Beverly of Graustark" to become a bewitching, pig-tailed and freckled-faced little Dutch kitchen slavey in her new picture, "The Red Mill," at the Eastman all the week of March 6, except Thursday night. It is a sparkling comedy based on the popular musical comedy of the same name. Miss Davies appears as Tina, the little kitchen slavey in a village inn, who is kept so busy at her pots and pans by her domineering uncle that she has no time for love. When Owen Moore as a young Irish tourist comes into her life she takes up romance in a serious way and sets out to win his heart. How she does it provides another of the whimsical and delightfully comic pictures that have been carrying the star to exceptional heights as a comedienne.

The musical number on the pro-

Morphy Coal & Feed Co., Inc.

Applewood for Fireplace
Stone 1826 731 CLINTON AVE. NORTH
"Ed" Williams, President

Acme Sales Co.

Let us show you, gentlemen, what \$20 to \$30 will buy in the line of clothing. We sell Rochester-made goods only.

Our Getting Acquainted Will Save Dollars for You

ACME SALES COMPANY

One Flight Up 95 MAIN ST. E.

THEY SAY

If it's a Marcel or Shampoo you want, let Helen do it at the

HELEN CLARKE
BEAUTY SHOPPE

203 WARD BLDG., CLINTON AV. S.

For Appointment,
Phone Main 5217

gram by the Eastman Theater Orchestra, Guy Fraser Harrison conducting, is Eduard Grieg's "Peer Gynt," Suite No. 1. State features will include a comedy musical novelty, "By the Zuyder Zee," presented by the Eastman Theater Company. An Our Gang Comedy called "Seeing the World," Eastman Current Events and an organ solo, "An Eastern Romance," with Miss Beatrice Ryan at the organ will be added attractions on the bill.

CORINTHIAN

"Step Along" will appear at the Corinthian theater week of March 7. Sam Morris designates it as the "Big Parade of Burlesque."

Agnes Nichols is at the head of the organization and the ever popular Harry Jackson, the funny Dutch

We recommend St. Paul Boulevard as a "model" of modern pavements.

Hed-Eze

The Laxative Headache Remedy

Cures the Grippe, Influenza, Fevers, Chills, Aches and Pains
No injurious or habit forming drugs. Sold at all drug stores for 25c

HED-EZE REMEDY CO.
Rochester, N. Y.

Where

Printed Products are Produced
Sooner Than Usual

TELEPHONE
【 Main 2145 】

GILLIES LITHO. & PRINTING CO.

42-48 Stone Street

ROCHESTER, N. Y.

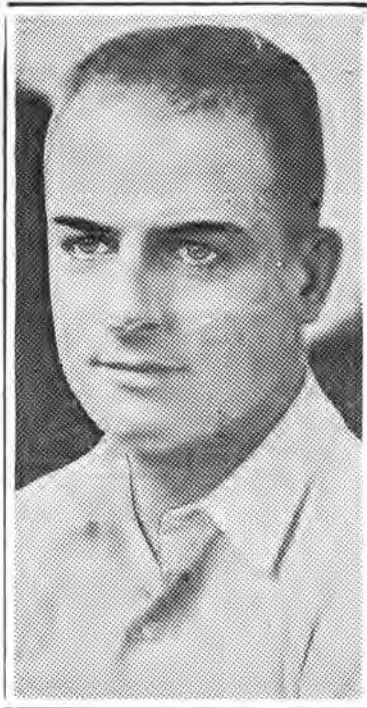
"We are as close to you as your telephone"

Culver Engraving Co. Inc.

ARTISTS & ENGRAVERS

SHOW YOUR CUSTOMER
WITH A CULVER CUT

59 E. MAIN ST. ROCHESTER, N. Y.



REGINALD DENNY in
"The Cheerful Fraud" at Regent

comedian, as the featured member. Mae Lorraine is again with the company, also Winnie Nichols, who, in addition to her own individual efforts, continues with her sister Agnes, to give an inimitable eccentric dancing specialty, and a singing act that is one of the gems of the performance. Elsie Dwan, an attractive prima donna with a voice that she uses to excellent advantage, is also conspicuously prominent on the program.

The Dancing Demon chorus of sixteen is mentioned as a special feature of the show.

THE BOY GROWS OLDER

Time has been kind to Glenn Hunter, judging from his popular roles. His stage age has actually grown a few years older, though the change has been gradual, and hardly visible to the naked eye. Still the change is there. Take his role in Booth Tarkington's "Clarence." In that famous piece Mr. Hunter played Bobby Wheeler, that tender and unhappy adolescent. Bobby was almost sixteen, about fifteen years and eight months, to be precise, just the age when callow youth would don spats, borrow his father's cane and swank about in the livery of age and experience.

In "The Intimate Strangers," Glenn Hunter grew a bit older. Then came
(Continued on page 20)

Hickson Electric Company, Inc.

Home of

W — H — E — C

Where every consideration is given to turning your dark days into light.
Hickson Wiring and Fixtures are best.

A Germicide That Works Wonders Internally as well as Externally

GILMORE'S GERMICIDE

Over a quarter of a century old—Has done a great deal for humanity
Used as a spray for irritated throat, catarrh and bronchial affections—taken internally for stomach disorders—used with success in sprains and bruises, headaches, eye troubles, fevers and germ disease. For perspiration, chafing, etc., with babies and children.

AT ALL DRUGGISTS—2 SIZES BOTTLES

WEDDINGS SERVED

Special attention given to Lunches for Churches,
Lodges, Clubs, Factories and Social Events

MARLOWE & SHAFER, Caterers

Phone, Glenwood 638

FURS



A
REMINDER!

Spring is only a few steps away, so now is the time to have your suits and coats made to order. We have just received a shipment of the latest styles in spring furs and the latest styles in cloth. We also carry a full line of the latest spring coats, just received from New York. Alterations made especially on all kinds of work. Any fur coat to be remodeled estimated at \$25.00 or more will be stored free.

Oppossum



R. H. GALINSKY

FUR SHOP

PHONE STONE 5940 657 CLINTON AVE. NORTH
Corner Lowell Street

FURS

TELL 'EM YOU SAW IT IN "THIS WEEK"

West High Singer Success in Concert

Harold Wollenhaupt Will Be Given
Glorious Reception by Hundreds of
His Admirers on Tuesday Evening



HAROLD WOLLENHAUPT

Competent critics in New York City are predicting that Harold Wollenhaupt, American baritone, who makes his first Rochester concert appearance in Convention Hall Tuesday evening, will be the leader of the new American school of concert singing that makes realism in song portrayal a dominant essential. He has a rich voice and an unusually beautiful and effective mezza voce.

Mr. Wollenhaupt's dramatic rendition of character songs like "Danny Dever," "Gunga Din" and "Lone Dog" is, some New York voice authorities claim, the most realistic the concert stage has heard. Six of these "he-man" songs are on his program, along with the soft, beautiful melodies of

Italian, German and English composers.

When he was a singer at West High School, Mr. Wollenhaupt's voice attracted much attention in Rochester musical circles and a great career was predicted for him.

Some husbands are easily "riled." One, in California, shot himself dead because his wife sarcastically insinuated he had taken an actress to luncheon. Another, in Kentucky, killed himself because his wife bobbed her hair.

Questions Answered

On Worry, Love, Marriage
Mail five questions and \$1.00
Personal Consultation, \$2.00
Telephone for Appointment

McNeal 516 Main St. East

Bernard Aronstam CUSTOM FURRIER

466 South Goodman Street
Near Monroe Av. Monroe 3458-J

*"We Make Your Office
Smile"*

HELEN du'PONT

Colorologist

INTERIOR DECORATOR

Telephone, Stone 2016

825 TEMPLE BUILDING

OLDSMOBILE SIX *Drive it and you'll buy it*

G. W. HENNER .: 1000 East Main Street

*"It Pleases Fred to
Please You"*



Corduroy Cord Tires

are built as good as the best tires and
then made better by addition of

SIDEWALL PROTECTION

**Fred's Gas & Tire
Service Station**

PLATT STREET (Near St. Paul)

MAIN 7958

Hemstitching and Pleating

MILLER PLEATING WORKS, 244 Mercantile Bldg.
Telephone, Stone 2596 Franklin St., Cor. North

CLOTH COVERED BUTTONS
MADE TO ORDER

PECOT EDGING, PINKING

THE BOY GROWS OLDER

(Continued from page 18)

"Merton of the Movies." Merton, of course, was about seventeen, more mature than Bobby Wheeler, but those of a Bobby sobered by the wisdom of those added two years.

Glenn Hunter is in John van Druten's play, "Young Woodley," at the Lyceum Theater all week of March 7. In the part of Roger Woodley he has attained to almost another year. He is seventeen years and about ten months. Or, as he puts it when Mary Servoss asks him how old he is:—"Nearly eighteen." He is older than Merton and his human stock will inventory somewhat higher. In fact, he has grown so old that he is allowed to kiss and fall in love. This is an experience that neither Bobby Wheeler nor Merton Gill were permitted to indulge in.

GAYETY

Jimmie Cooper is back again in Columbia Burlesque with his "Black and White Revue," at the Gayety theater the week of March 7, seventy players strong—divided equally between whites and blacks.

With Jimmie Cooper in his white section is Chuck Wilson. Betty Delmonte, classy and statuesque; Patsy O. Day, a lively soubrette; Jack Ryan, singer; Jack Willis, dancer, and Sandy Ackland and his Royal Scots will be other principals.

The colored folk will be led by Butterbeans and Susie, recorders on

B. J. HENNER

Carting and Storage Company
94 FRONT ST. MAIN 7896

WILLIAMS COAL CO. QUALITY COAL

871 DEWEY AVE., Cor. Driving Park Ave.
"Ed" Williams, President Glenwood 162

FOR BETTER ROOMS
Hot and Cold Running Water
R. J. PATTERSON
Furnished Rooms

98 S. Fitzhugh St. Main 4559-J

The Pine Tree Branch
Is famous for
Waffles and Maple Syrup
Creamed Chicken and Waffles
EAST AVE. AT UNION

phonograph disks; Five Crackerjacks, athletic dancers, including Florence Parham; Octavia Sumler, the "Tiger Lady from Harlem"; Louisiana Gulfport and George Brown, comedians; Brown and Marguerite, whirlwind dancers, and Eddie Heywood's Hot Five instrumentalists.

Easy to surmise this woman's ambition: "Wanted, position as housekeeper in widower's home by a good looking woman of 30."

Rock Beach is Rochester's most aristocratic summer district, but is without adequate fire protection. A water line to Rock Beach is needed.

Politics is a great sport in Chicago. One candidate for Mayor of that city referred to his opponent as a "man who spills soft eggs in his whiskers, pours soup on his vest, and never takes a bath." No office-seeker in Rochester would dare make that kind of speech.

Triangle Drug Co.

Theodore G. Hyman

Prescription Specialists

516 MAIN STREET EAST

MAIN 7628

(At Scio Street)

AMBASSADOR and CAVALIER

The talk of the New York Show. Beautiful new models

YONK-FOSTER NASH, INC.

1645 ST. PAUL

For Demonstration, Call Glenwood 5012

"I Trim the Car, Not the Owner"

CUSTOM AUTOMOBILE TRIMMER

Tops, Curtains, Slip Covers, Upholstering, etc.

CHAS. T. HIGGINS

Stone 2481

16 GARDINER PARK

CALL
MAIN 5469



Established 1888

JAC HOCHSTEIN, Inc.

Bonded and Authorized
STEAMSHIP TRAVEL AGENCY
Tours and Cruises

We offer reservations on all steamship lines
to any port at official rates

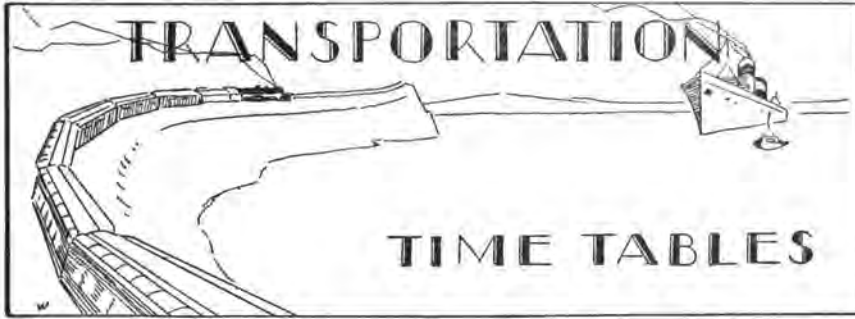
HARRY ALDERMAN, Mgr. 284 JOSEPH AVE.
OFFICE HOURS 9 A. M.-9 P. M.

Our representative will call at your request
at your home or office

STEAMER SAILINGS

| Date | Steamer | Destination Via |
|----------|---------------------|---|
| March 9 | Asia | Beirut: Prov., Az., Lisbon, Pir., Cons. |
| March 9 | President Roosevelt | Bremen: Cobh., Plymouth, Cherb. |
| March 10 | Rochambeau | Havre: Direct |
| March 10 | Lafayette | Vigo: Bordeaux |
| March 10 | Thuringia | Hamburg: Boston, Cobh. |
| March 10 | United States | Copenhagen: Oslo |
| March 12 | Roma | Genoa: Naples |
| March 12 | France | Havre: Plymouth |
| March 12 | Stuttgart | Bremen: Plymouth, Cherbourg |
| March 12 | Aurania | Liverpool: Cobh. |
| March 12 | Cameronia | Glasgow: Londonderry |
| March 12 | Ascania | London: Plymouth, Havre |
| March 12 | Berengaria | Southampton: Cherbourg |
| March 12 | Minnetonka | London: Cherbourg |
| March 12 | Cedric | Liverpool: Boston, Cobh. |
| March 15 | Stavangerfjord | Oslo: Stavanger Bergen |
| March 17 | Deutschland | Hamburg: Cherbourg, Southampton |
| March 17 | Oscar II | Copenhagen: Halifax, Oslo |
| March 19 | Aquitania | Southampton: Cherbourg |
| March 19 | Drottningholm | Gothenburg: Halifax |

For destination call Main 5469



NEW YORK STATE RAILWAYS TIMETABLES

Charlotte

Charlotte (daily), effective April 7, 1926.
 Leave carhouse 4:10, 5:02, 5:25, 5:41, 5:55, 6:07, 6:16, 6:26. Leave Main and State 6:18, 6:29, 6:36, 6:41, 6:46, 6:53, 6:59, 7:11, 7:15, 7:18, 7:23, 7:36, 7:48, 7:54, 8:02, 8:14, 8:33, 8:49, 9:11, 9:32, 9:51, 10:10, 10:29, 10:48, 11:07, 11:26, 11:40, 11:50 A. M.; 12:05, 12:23, 12:37, 12:47, 1:01, 1:11, 1:25, 1:39, 1:51, 2:03, 2:16, 2:29, 2:42, 2:54, 3:07, 3:20, 3:32, 3:46, 3:58, 4:10, 4:23, 4:30, 4:36, 4:42, 4:48, 4:54, 5:00, 5:07, 5:12, 5:18, 5:25, 5:31, 5:37, 5:46, 5:53, 6:00, 6:06, 6:14, 6:19, 6:32, 6:46, 6:58, 7:14, 7:27, 7:40, 7:52, 8:05, 8:24, 8:43, 9:02, 9:21, 9:40, 9:59, 10:18, 10:34, 10:49, 10:57, 11:15, 11:34 P. M.; 12:03, 12:50, 1:50 A. M.

Leave Charlotte (daily) 4:30, 5:20, 5:45, 6:01, 6:15, 6:27, 6:36, 6:43, 6:53, 7:12, 7:17, 7:21, 7:29, 7:34, 7:39, 7:51, 7:56, 8:02, 8:07, 8:16, 8:27, 8:34, 8:44, 8:54, 9:13, 9:32, 9:51, 10:11, 10:30, 10:50, 11:08, 11:27, 11:46 A. M.; 12:05, 12:20, 12:30, 12:47, 1:02, 1:15, 1:27, 1:40, 1:51, 2:05, 2:18, 2:30, 2:42, 2:55, 3:08, 3:21, 3:33, 3:47, 4:00, 4:13, 4:23, 4:39, 4:49, 5:05, 5:11, 5:20, 5:24, 5:28, 5:36, 5:40, 5:47, 5:55, 6:00, 6:06, 6:11, 6:20, 6:25, 6:36, 6:43, 6:49, 6:54, 6:58, 7:14, 7:27, 7:39, 7:56, 8:06, 8:24, 8:34, 9:44, 9:03, 9:26, 9:42, 10:00, 10:19, 10:38, 10:57, 11:15, 11:28, 11:36, 11:52 P. M.; 12:13, 12:42, 1:26, 2:28 A. M.

Charlotte (Saturday), effective Sept. 11, 1926.
 Leave carhouse 4:10, 5:02, 5:25, 5:41, 5:55, 6:00, 6:07, 6:16, 6:26 A. M. Leave Main and State Streets 6:18, 6:29, 6:41, 6:46, 6:53, 6:59, 7:12, 7:16, 7:20, 7:30, 7:35, 7:43, 7:54, 8:03, 8:13, 8:33, 8:45, 8:59, 9:12, 9:27, 9:39, 9:53, 10:07, 10:21, 10:35, 10:49, 11:03, 11:17, 11:31, 11:45, 11:55 A. M.; 12:03, 12:11, 12:24, 12:35, 12:48, 1:00, 1:12, 1:20, 1:32, 1:40, 1:48, 2:00, 2:10, 2:20, 2:30, 2:40, 2:50, 3:01, 3:11, 3:21, 3:31, 3:41, 3:51, 4:01, 4:12, 4:22, 4:32, 4:40, 4:47, 4:56, 5:04, 5:12, 5:20, 5:28, 5:36, 5:44, 5:52, 6:00, 6:08, 6:16, 6:24, 6:36, 6:47, 6:59, 7:10, 7:22, 7:33, 7:44, 7:54, 8:11, 8:32, 8:49, 9:06, 9:27, 9:48, 10:09, 10:29, 10:50, 11:11, 11:25, 11:40 P. M.; 12:05, 12:50, 1:50 A. M.

Leave Charlotte (Saturday) 4:30, 5:20, 5:45, 6:01, 6:15, 6:20, 6:26, 6:36, 6:45, 6:53, 7:12, 7:21, 7:29, 7:35, 7:39, 7:50, 7:56, 8:02, 8:07, 8:16, 8:30, 8:34, 8:43, 8:57, 9:12, 9:25, 9:39, 9:53, 10:07, 10:21, 10:35, 10:49, 11:03, 11:16, 11:32, 11:44, 11:57 A. M.; 12:12, 12:25, 12:36, 12:44, 12:50, 1:04, 1:15, 1:29, 1:40, 1:51, 2:00, 2:11, 2:20, 2:30, 2:40, 2:50, 3:01, 3:11, 3:21, 3:31, 3:41, 3:51, 4:02, 4:14, 4:22, 4:34, 4:42, 4:51, 5:02, 5:14, 5:22, 5:30, 5:38, 5:46, 5:55, 6:00, 6:07, 6:17, 6:24, 6:33, 6:40, 6:49, 6:56, 7:04, 7:14, 7:25, 7:37, 7:47, 8:00, 8:12, 8:25, 8:33, 8:53, 9:09, 9:28, 9:48, 10:09, 10:33, 10:50, 11:08, 11:34, 11:49 P. M.; 12:05 (12:18 carhouse), 12:42 (1:25, 2:28 carhouse) A. M.

Charlotte (Sunday). Leave carhouse 4:10, 6:09, 6:40. Leave Main and State Streets 6:12, 6:54, 7:07, 7:30, 7:51, 8:12, 8:34, 8:55, 9:16, 9:37, 9:57, 10:17, 10:37, 10:58, 11:18, 11:38, 11:51 A. M.; 12:05, 12:19, 12:32, 12:45, 12:59, 1:12, 1:24, 1:36, 1:49, 2:01, 2:13, 2:26, 2:38, 2:50, 3:03, 3:16, 3:27, 3:40, 3:52, 4:04, 4:17, 4:29, 4:41, 4:54, 5:06, 5:19, 5:31, 5:43, 5:55, 6:08, 6:20, 6:32, 6:51, 7:09, 7:28, 7:46,

8:05, 8:23, 8:42, 9:00, 9:19, 9:37, 9:56, 10:14, 10:33, 10:51, 11:12, 11:29 P. M.; 12:02, 12:50, 1:50 A. M.
 Leave Charlotte (Sunday) 4:30, 5:55, 6:29, 7:00, 7:32, 7:51, 8:12, 8:31, 8:51, 9:17, 9:37, 9:57, 10:17, 10:37, 10:58, 11:18, 11:38, 11:58 A. M.; 12:17, 12:35, 12:47, 12:59, 1:12, 1:25, 1:38, 1:51, 2:03, 2:15, 2:28, 2:40, 2:52, 3:05, 3:17, 3:29, 3:42, 3:54, 4:06, 4:19, 4:31, 4:43, 4:56, 5:07, 5:20, 5:33, 5:45, 5:57, 6:10, 6:22, 6:34, 6:51, 6:59, 7:11, 7:30, 7:48, 8:07, 8:25, 8:44, 9:02, 9:21, 9:39, 9:59, 10:16, 10:34, 10:56, 11:13, 11:35, 11:51 P. M.; 12:07, 12:40 (1:26, 2:38 carhouse) A. M.

Summerville

Summerville (daily), effective November 1, 1926. Leave Main St. 5:22, 6:40, 6:50, 6:03, 6:20, 6:41, 6:59, 7:20, 7:38, 8:02, 8:18, 8:59, 9:40, 10:20, 11:00, 11:40 A. M.; 12:18, 12:58, 1:38, 2:22, 3:07, 3:51, 4:36, 5:01, 5:13, 6:23, 6:40, 6:54, 6:07, 6:20, 6:56, 7:32, 8:07, 8:43, 9:20, 10:00, 10:40, 11:20, 12:00 P. M.
 Leave Summerville (daily) 6:02, 6:20, 6:30, 6:43, 7:02, 7:22, 7:38, 8:00, 8:19, 8:41, 8:58, 9:39, 10:19, 10:59, 11:42 A. M.; 12:18, 1:00, 1:37, 2:20, 3:05, 3:48, 4:30, 5:15, 5:41, 5:55, 6:02, 6:20, 6:34, 6:48, 6:57, 7:33, 8:12, 8:46, 9:21, 10:00, 10:39, 11:20, 11:58 P. M.; 12:39 A. M.

Summerville (Saturday), effective November 6, 1926. Leave Main St. 5:22, 6:40, 6:50, 6:03, 6:20, 6:41, 6:59, 7:20, 7:38, 8:02, 8:18, 8:59, 9:40, 10:20, 11:00, 11:40 A. M.; 12:19, 1:00, 1:40, 2:20, 3:00, 3:40, 4:20, 4:40, 5:00, 5:18, 5:37, 5:55, 6:19, 6:56, 7:32, 8:07, 8:43, 9:20, 10:00, 10:40, 11:20, 12:00 P. M.
 Leave Summerville (Saturday) 6:02, 6:20, 6:30, 6:43, 7:02, 7:22, 7:38, 8:00, 8:19, 8:41, 8:58, 9:39, 10:19, 11:00, 11:40 A. M.; 12:20, 12:59, 1:39, 2:19, 2:59, 3:39, 4:20, 5:00, 5:19, 5:39, 5:57, 6:19, 6:34, 6:57, 7:33, 8:12, 8:46, 9:21, 10:00, 10:39, 11:20, 11:58 P. M.; 12:39 A. M.

Summerville (Sunday), effective November 7, 1926. Leave Main St. 6:54, 7:40, 8:20, 9:05, 9:48, 10:32, 10:52, 11:15, 11:58 A. M.; 12:42, 1:25, 2:08, 2:52, 3:35, 4:18, 5:02, 5:45, 6:28, 7:11, 7:55, 8:43, 9:22, 10:01, 10:40, 11:32 P. M.
 Leave Summerville (Sunday) 7:30, 8:20, 8:58, 9:48, 10:26, 11:18, 11:30, 11:56 A. M.; 12:39, 1:23, 2:06, 2:49, 3:33, 4:16, 4:59, 5:43, 6:26, 7:09, 7:50, 8:41, 9:22, 10:01, 10:40, 11:19 P. M.; 12:11 A. M.

Sea Breeze

Sea Breeze (daily), effective September 7, 1926. Leave Bay Street 5:45, 5:56, 6:07, 6:27, 6:45 A. M.
 Leave Main and State Streets 5:14, 6:03, 6:20, 6:42, 7:00, 7:23, 8:05, 8:48, 9:29, 10:12, 10:54, 11:36 A. M.; 12:21, 1:01, 1:40, 2:21, 3:01, 3:42, 4:19, 4:39, 4:53, 5:03, 5:12, 5:22, 5:40, 5:50, 6:03, 6:14, 6:50, 7:32, 8:17, 8:56, 9:38, 10:20, 11:12 P. M.; 12:05 A. M.
 Leave Sea Breeze daily 5:53, 6:12, 6:23, 6:34, 6:43, 6:53, 7:02, 7:13, 7:22, 7:40, 8:05, 8:47, 9:29, 10:11, 10:55, 11:35 A. M.; 12:20, 1:01, 1:41, 2:21, 3:01, 3:41, 4:24, 4:59, 5:24, 5:35, 5:43, 5:51, 6:04, 6:22, 6:33, 6:42, 6:53, 8:13, 8:57, 9:38, 10:20, 11:05, 11:51 P. M.; 12:41 A. M.

Sea Breeze (Saturday), effective Sept. 11, 1926. Leave Bay St. 5:46, 5:56, 6:07, 6:27, 6:46 A. M. Leave Main and State Streets 5:14, 6:03, 6:20, 6:42, 7:00, 7:23, 8:05, 8:48, 9:29, 10:12, 10:54, 11:36 A. M.; 12:00 noon; 12:21, 12:39, 1:00, 1:40, 2:20, 3:01, 3:41, 4:23, 4:42, 5:00, 5:20, 5:36, 5:57, 6:13, 6:30, 6:57, 7:40, 8:24, 9:02, 9:45, 10:27, 11:09 P. M.; 12:02 A. M.

Leave Sea Breeze (Saturday) 5:53, 6:12, 6:23, 6:34, 6:43, 6:53, 7:02, 7:13, 7:22, 7:40, 8:05, 8:47, 9:29, 10:11, 10:52, 11:36 A. M.; 12:16, 12:40, 1:01, 1:20, 1:40, 2:20, 3:01, 3:42, 4:21, 5:02, 5:22, 5:40, 5:58, 6:16, 6:36, 6:53, 7:10, 7:40, 8:20, 9:04, 9:44, 10:27, 11:05, 11:50 P. M.; 12:39 A. M.

Sea Breeze (Sunday), effective October 31, 1926. Leave Main and State Sts. 6:15, 7:00, 7:42, 8:17, 9:03, 9:40, 10:23, 11:02, 11:41 A. M.; 12:20, 1:00, 1:40, 2:20, 3:00, 3:40, 4:20, 5:00, 5:40, 6:20, 7:01, 7:37, 8:13, 8:49, 9:25, 10:01, 10:37, 11:32 P. M.

Leave Sea Breeze (Sunday) 6:53, 7:40, 8:19, 8:57, 9:44, 10:22, 11:02, 11:41 A. M.; 12:21, 1:00, 1:40, 2:20, 3:00, 3:40, 4:20, 5:00, 5:40, 6:25, 7:01, 7:39, 8:15, 8:52, 9:27, 10:03, 10:41, 11:16 P. M.; 12:20 A. M.

OWL CARS

ROCHESTER CITY LINES

LAKE AND MONROE
 Lake Ave.—Leave Main and State—1:31, 2:31, 3:31, 4:35. Leave Terminal—12:41, 1:18, 1:47, 2:47, 3:48, 4:50.
 Monroe—Leave Main and State—1:00, 1:36, 2:03, 3:03, 4:04, 5:06. Leave Terminal—1:16, 1:52, 2:17, 3:17, 4:20, 5:20.

MAIN AND WEST
 Main—Leave Main and State—1:04, 1:32, 2:31, 3:31, 4:30, 4:55. Leave Terminal—1:34, 2:46, 3:45, 4:48, 5:15.
 West Ave.—Leave Main and State—1:02, 1:30, 2:01, 3:01, 4:00, 5:05. Leave Terminal—1:17, 1:45, 2:16, 3:16, 4:15, 5:25.

PARK AND DEWEY
 Park Ave.—Leave Main and State—1:04, 1:37, 2:26, 3:50, 5:13. Leave Terminal—1:26, 2:00, 2:47, 4:11, 5:33.
 Dewey Ave.—Leave Main and State—1:04, 1:30, 1:48, 3:08, 4:32, 5:01. Leave Terminal—1:12, 1:30, 1:56, 2:07, 3:29, 4:52, 5:26.

UNIVERSITY AND LYELL
 University—Leave Main and State—1:05, 1:32, 2:31, 3:31, 4:31. Leave Terminal—1:22, 1:47, 2:47, 3:47, 4:48, 5:20.
 Lyell Ave.—Leave Main and State—1:02, 1:37, 2:01, 3:01, 4:01, 5:02. Leave Terminal—1:18, 1:54, 2:17, 3:17, 4:17, 5:22.

ST. PAUL AND SOUTH
 St. Paul—Leave Main—1:10, 1:43, 2:43, 3:43, 4:43. Leave Terminal—1:33, 1:58, 2:58, 3:58, 4:58.
 South Ave.—Leave Main—1:13, 1:45, 2:13, 3:13, 4:13, 5:13. Leave Terminal—1:28, 2:02, 2:28, 3:28, 4:28.

JOSEPH AND ALLEN
 Joseph—Leave Main and State—1:01, 1:28, 1:56, 2:56, 3:58, 4:58. Leave Terminal—1:18, 1:42, 2:11, 3:11, 4:13, 5:16.
 Allen—Leave Main and State—2:26, 3:26, 4:28. Leave Terminal—2:41, 3:41, 4:43.

PORTLAND AND PLYMOUTH
 Portland—Leave Main and State—1:00, 1:36, 2:13, 3:13, 4:13, 5:14. Leave Terminal—1:21, 2:29, 3:29, 4:29, 5:09.
 Plymouth—Leave Main and State—1:06, 1:40, 2:45, 3:45, 4:45. Leave Terminal—1:21, 1:57, 2:59, 3:59, 4:59.

ARNETT AND CLIFFORD
 Arnett—Leave Main and State—1:20, 2:35, 3:50, 5:06. Leave Terminal—1:39, 2:54, 4:09, 5:20.
 Clifford—Leave Main and State—1:58, 3:13, 4:28. Leave Terminal—2:17, 3:32, 4:47.

SUBURBAN & ELECTRIC RAILWAYS

ROCHESTER and EASTERN LINE

Leave Station, Broad St. and South Ave.

6:30 A. M.—Daily, except Sundays, arrive Pittsford 7:00 A. M., Victor 7:22 A. M., Canandaigua 7:47 A. M., Geneva 8:26 A. M.

7:00 A. M.—Daily, except Sunday, to Pittsford only, arrive 7:26 A. M.

7:30 A. M.—Daily to Canandaigua only. Arrive Pittsford 8:00 A. M., Victor 8:22 A. M., Canandaigua 8:47 A. M.

8:30 A. M.—Daily, arrive Pittsford 9:00 A. M., Victor 9:22 A. M., Canandaigua 9:47 A. M., Geneva 10:26 A. M.

9:30 A. M.—Daily to Canandaigua only. Arrive Pittsford 10:00 A. M., Victor 10:22 A. M., Canandaigua 10:47 A. M.

10:30 A. M.—Daily, arrive Pittsford 11:00 A. M., Victor 11:22 A. M., Canandaigua 11:47 A. M., Geneva 12:26 P. M.

11:30 A. M.—Saturdays to Canandaigua only. Arrive Pittsford 12:00 noon, Victor 12:22 P. M., Canandaigua 12:47 P. M.

11:30 A. M.—Sundays only. Arrive Pittsford 12:00 noon, Victor 12:22 P. M., Canandaigua 12:47 P. M., Geneva 1:26 P. M.

12:30 P. M.—Daily, arrive Pittsford 1:00 P. M., Victor 1:22 P. M., Canandaigua 1:47 P. M., Geneva 2:26 P. M.

1:30 P. M.—Saturdays and Sundays only. Arrive Pittsford 2:00 P. M., Victor 2:22 P. M., Canandaigua 2:47 P. M., Geneva 3:26 P. M.

2:30 P. M.—Daily, except Sundays. Arrive Pittsford 3:00 P. M., Victor 3:22 P. M., Canandaigua 3:47 P. M., Geneva 4:26 P. M.

2:30 P. M.—Sundays to Canandaigua only. Arrive Pittsford 3:00 P. M., Victor 3:22 P. M., Canandaigua 3:47 P. M.

3:30 P. M.—Daily, arrive Pittsford 4:00 P. M., Victor 4:22 P. M., Canandaigua 4:47 P. M., Geneva 5:26 P. M.

4:30 P. M.—Daily, arrive Pittsford 5:00 P. M., Victor 5:22 P. M., Canandaigua 5:47 P. M., Geneva 6:26 P. M.

5:05 P. M.—Daily, except Sundays to Pittsford only. Arrive 5:32 P. M.

5:30 P. M.—Daily to Canandaigua only. Arrive Pittsford 6:00 P. M., Victor 6:22 P. M., Canandaigua 6:45 P. M.

6:05 P. M.—Daily, except Saturdays and Sundays, to Pittsford only. Arrive 6:31 P. M.

6:10 P. M.—Daily, arrive Pittsford 6:40 P. M., Victor 7:00 P. M., Canandaigua 7:25 P. M., Geneva 8:02 P. M.

7:30 P. M.—Daily, arrive Pittsford 8:00 P. M., Victor 8:22 P. M., Canandaigua 8:47 P. M., Geneva 9:26 P. M.

9:30 P. M.—Daily, arrive Pittsford 10:00 P. M., Victor 10:22 P. M., Canandaigua 10:47 P. M., Geneva 11:26 P. M.

11:30 P. M.—Daily, arrive Pittsford 12:00 midnight, Victor 12:16 A. M., Canandaigua 12:40 A. M., Geneva 1:15 A. M.

Rochester & Syracuse R. R. Co., Inc.

MAIN 3697

Passenger (Erie R. R.) Station, 35 Court St. For East Rochester, Fairport, Macedon, Palmyra, †Port Gibson, Newark, Lyons, Clyde, Savannah, Port Byron, Auburn, Weedsport, Jordan, Memphis, Warner, Syracuse.

(Elec. Terminal, Syracuse, 114 W. Genesee St.)

Limited trains leave Rochester daily, except as otherwise noted, at 7:00, *8:00, 9:00 and 11:00 A. M.; 1:00, 3:00, 4:00, 5:00 and 11:00 P. M.; 12:00 noon Saturday only to Lyons; 2:00 P. M. Saturday only; 6:00 P. M. daily except Sunday to Newark; 7:15 P. M. Sunday and holidays only; 11:00 P. M. to Newark.

*Limited, Rochester to Newark Station. Local, Newark Station to Syracuse.

Local trains leave Rochester daily, except as otherwise noted, at 6:00, *8:00 and 10:05

A. M.; 12:05, 2:05, 4:05, 6:05, 8:05 and 9:05 P. M.; 8:05 A. M., 5:05 and 11:45 P. M. and 12:45 A. M. to Newark; 3:05 P. M. daily except Sunday to Lyons; 5:25 and 6:45 P. M. daily except Sunday to Newark; 7:18 and 9:50 P. M. to Fairport; 10:15 P. M. Sunday only to Newark; 11:05 P. M. to Clyde.

*Limited, Rochester to Newark Station. Local, Newark Station to Syracuse.

†Port Gibson is a local stop.

Suburban Service Between Fairport and Culver Road

Local trains leave Culver Road Station daily, except as otherwise noted, at (6:40 except Sunday), 7:00, 7:27 (7:47 except Sunday), 8:00, 8:32 (8:47 except Sunday), 9:00, 9:27 (9:47 except Sunday), 10:00, 10:32, 11:00, 11:30 A. M.; 12:00 noon, 12:32, 1:00, 1:30, 2:00, 2:32, 3:00, 3:32, 4:00, 4:32 (4:57 limited except Sunday to Clyde), 5:02, 5:36, 6:00 (6:35 except Sunday to Newark) (6:57 limited), 8:00, 8:32, 9:00, 9:35 (10:50 P. M. to Newark).

Rochester, Lockport & Buffalo Railroad Corp.

Westbound

Trains leave eastern terminal, Court Street, at 6:10, 7:40, 7:10, 7:40, 9:10, 10:10, 11:10 A. M.; 12:10, 1:10, 2:10, 3:10, 4:10, 4:40, 5:10, 5:40, 6:10, 6:40, 8:10, 10:10 P. M.; 12:10 A. M.

Nos. 71, 73, 75, *9 and †11 leave Spencerport, westbound, at 4:38, 4:49, 5:19, 5:49, 6:19 A. M.

†Do not run on Sundays.

*Starts from Lyell Avenue and Glide Street.

Eastbound

Leave Buffalo at *5:23, 6:05, 7:05, 8:05, 9:05, 11:05 A. M.; 1:05, 2:05, 3:05, 4:05, 5:35, 7:05, 9:05, 11:05 P. M.

*Starts from Cold Springs.

ROCHESTER and SODUS BAY

Leave Station, Broad St. and South Ave.

6:45 A. M.—Daily, arrive Webster 7:39 A. M., Ontario 8:00 A. M., Williamson

8:14 A. M., Sodus 8:34 A. M., Sodus Point 8:56 A. M.

7:35 A. M.—Daily, except Sundays, to Ontario only. Arrive Webster 8:34 A. M., Ontario 8:56 A. M.

7:45 A. M.—Sundays only to Ontario. Arrive Webster 8:50 A. M., Ontario 9:07 A. M.

8:35 A. M.—Daily to Ontario only. Arrive Webster 9:27 A. M., Ontario 9:47 A. M.

9:30 A. M.—Daily, arrive Webster 10:21 A. M., Ontario 10:45 A. M., Williamson 10:54 A. M., Sodus 11:12 A. M., Sodus Point 11:33 A. M.

12:10 P. M.—Daily, arrive Webster 1:10 P. M., Ontario 1:31 P. M., Williamson 1:48 P. M., Sodus 2:08 P. M., Sodus Point 2:30 P. M.

1:10 P. M.—Saturday and Sundays only. Arrive Webster 2:09 P. M.

2:10 P. M.—Daily, arrive Webster 3:10 P. M., Ontario 3:31 P. M., Williamson 3:48 P. M., Sodus 4:08 P. M., Sodus Point 4:30 P. M.

3:10 P. M.—Daily to Sodus only. Arrive Webster 4:10 P. M., Ontario 4:31 P. M., Williamson 4:48 P. M., Sodus 5:08 P. M.

4:10 P. M.—Daily, arrive Webster 5:10 P. M., Ontario 5:31 P. M., Williamson 5:48 P. M., Sodus 6:08 P. M., Sodus Point 6:30 P. M.

5:10 P. M.—Daily to Ontario only. Arrive Webster 6:10 P. M., Ontario 6:31 P. M.

5:40 P. M.—Daily, except Saturdays and Sundays, to Webster only. Arrive 6:35 P. M.

6:10 P. M.—Daily to Ontario only. Arrive Webster 7:10 P. M., Ontario 7:31 P. M.

7:10 P. M.—Daily, arrive Webster 8:10 P. M., Ontario 8:27 P. M., Williamson 8:39 P. M., Sodus 8:55 P. M., Sodus Point 9:15 P. M.

9:40 P. M.—Daily to Sodus only. Arrive Webster 10:32 P. M., Ontario 10:51 P. M., Williamson 11:04 P. M., Sodus 11:22 P. M.

11:30 P. M.—Daily to Ontario only. Arrive Webster 12:24 A. M., Ontario 12:40 A. M.

STEAM RAILROAD TIMETABLES

This publication is not responsible for errors in Timetable, inconvenience or damage resulting from delayed trains, or failure to make connections. Unless otherwise specified, all trains run daily.

NEW YORK CENTRAL RAILROAD

EASTWARD—(Main Line)

Leave N. Y. C.

Central Ave.

1:00 A. M.—Arrive New York, 9:22 A. M. (Pullman cars only.)

12:12 A. M.—Arrive Syracuse, 1:52 A. M.; Utica, 3:01 A. M.; Albany, 5:15 A. M.; New York, 9:00 A. M.

1:15 A. M.—Arrive New York, 9:30 A. M. (Pullman cars only.)

3:30 A. M.—Arrive Syracuse, 5:25 A. M.; Utica, 6:50 A. M.; Albany, 9:15 A. M.; New York, 2:00 P. M.; Boston, 3:10 P. M.

3:40 A. M.—Arrive Syracuse, 5:40 A. M., stopping at principal intermediate stations, Syracuse to New York, arriving latter point 3:30 P. M.

6:17 A. M.—Arrive Syracuse, 8:15 A. M.; Utica, 9:48 A. M.; Albany, 12:10 P. M.; Yonkers, 3:31 P. M.; New York, 4:00 P. M.

7:34 A. M.—Arrive Syracuse, 10:00 A. M.; makes stops at Palmyra, East Palmyra, Newark and Lyons.

8:31 A. M.—Arrive Syracuse, 10:11 A. M.; Utica, 11:21 A. M.; Albany, 1:30 P. M.; New York, 5:00 P. M.; Boston, 7:25 P. M. (Pullman cars only.)

8:53 A. M.—Arrive Syracuse, 10:33 A. M.; Utica, 11:43 A. M.; Albany, 1:45

P. M.; New York, 5:25 P. M.; Boston, 7:25 P. M. (Pullman cars only.)

9:39 A. M.—Arrive Syracuse, 11:25 A. M.; Utica, 12:40 P. M.; Albany, 2:47 P. M.; New York, 6:30 P. M.; Boston, 8:45 P. M.

10:55 A. M.—Arrive Syracuse, 12:30 P. M.; Utica, 1:41 P. M.; Albany, 3:50 P. M.; New York, 7:25 P. M.; Boston, 11:00 P. M.

12:27 P. M.—Arrive Syracuse, 2:05 P. M.; Utica, 3:21 P. M.; Albany, 5:33 P. M.; New York, 9:15 P. M.

2:24 P. M.—Empire State Express (except Sunday), arrive Syracuse, 3:57 P. M.; Utica, 5:02 P. M.; Albany, 6:57 P. M.; New York, 10:10 P. M.

2:24 P. M.—Sunday only—arrive Syracuse, 3:57 P. M.; Rome, 4:49 P. M.; Utica, 5:08 P. M.; Albany, 7:08 P. M.; New York, 10:30 P. M.

2:30 P. M.—Arrive Syracuse, 6:20 P. M., stopping at all stations.

3:54 P. M.—"The DeWitt Clinton," arrive Syracuse, 5:27 P. M.; Utica, 6:35 P. M.; Schenectady, 8:02 P. M.; Albany, 8:30 P. M.; Poughkeepsie, 9:55 P. M.; Harmon, 10:51 P. M.; New York, 11:45 P. M.

4:02 P. M.—Arrive Syracuse, 6:30 P. M.; Utica, 8:40 P. M.; Albany, 11:45 P. M., stopping at principal intermediate stations.

6:22 P. M.—Arrive Syracuse, 8:15 P. M.; Utica, 9:42 P. M.; Albany, 12:01 A. M.; Boston, 6:40 A. M.

7:54 P. M.—"Central City Express," arrive Syracuse, 9:30 P. M.

9:16 P. M.—Arrive Syracuse, 11:10 P. M.; Utica, 12:47 A. M.; Albany, 3:05 A. M.; New York, 6:45 A. M.
 10:18 P. M.—Arrive New York, 7:15 A. M.; Montreal, 10:20 A. M. (Pullman cars only.)
 11:04 P. M.—Arrive Syracuse, 12:45 A. M.; Utica, 2:00 A. M.; Albany, 4:00 A. M.; Yonkers, 7:19 A. M.; New York, 7:50 A. M.
 11:51 P. M.—Arrive Albany, 4:55 A. M.; Boston, 10:55 A. M. (Pullman cars only.)

AUBURN ROAD

4:00 A. M.—Except Sunday; arrive Canandaigua, 4:49 A. M.; Geneva, 5:49 A. M.; Auburn, 7:05 A. M.
 6:30 A. M.—Daily; arrive Canandaigua, 7:24 A. M.; Geneva, 8:24 A. M.; Auburn, 9:35 A. M.; Philadelphia, Pa., 6:55 P. M.; Washington, D. C., 7:05 P. M.
 12:23 P. M.—Except Sunday; arrive Canandaigua, 1:06 P. M.; Geneva, 1:56 P. M.; Auburn, 2:57 P. M.; Williamsport, Pa., 7:05 P. M.; Harrisburg, Pa., 10:45 P. M.
 2:35 P. M.—Except Sunday; arrive Canandaigua, 3:30 P. M.; Geneva, 4:24 P. M.; Auburn, 5:38 P. M.
 7:00 P. M.—Daily; arrive Canandaigua, 7:58 P. M.; Geneva, 8:57 P. M.; Auburn, 10:15 P. M.; Philadelphia, Pa., 7:52 A. M.; Washington, D. C., 8:50 A. M.

ONTARIO DIVISION (EAST)

6:00 A. M.—Except Sunday; arrive Oswego, 8:46 A. M., making stops at all stations.
 5:40 P. M.—Daily; arrive Oswego, 9:05 P. M., making stops at all stations.

WESTWARD—(Main Line)

12:36 A. M.—Arrive Cincinnati, 2:15 P. M.; St. Louis, 5:00 P. M. (Pullman cars only.)
 12:40 A. M.—Arrive Buffalo, 2:50 A. M.; Cleveland, 7:00 A. M.; Toledo, 10:55 A. M.; Chicago, 5:00 P. M.
 1:23 A. M.—Arrive Detroit, 8:10 A. M.; Grand Rapids, 12:05 P. M.; Chicago, 2:00 P. M. (Pullman cars only.)
 2:37 A. M.—Arrive Cleveland, 8:30 A. M.; Hamilton, Ont., 6:35 A. M.; Toronto, Ont., 7:50 A. M. (Pullman cars only.)
 5:05 A. M.—Arrive Buffalo, 6:55 A. M.; Cleveland, 11:50 A. M.; Hamilton, Ont., 10:30 A. M.; Toronto, Ont., 11:40 A. M.
 5:47 A. M.—Arrive Buffalo, 7:40 A. M. (Pullman cars only.)
 6:37 A. M.—Arrive Buffalo, 8:20 A. M.; Cleveland, 12:24 P. M.; Toledo, 3:00 P. M.; Chicago, 7:30 P. M.; Hamilton, Ont., 12:28 P. M.; Toronto, Ont., 1:38 P. M.
 7:15 A. M.—Arrive Batavia, 9:45 A. M.; Buffalo, 9:45 A. M., stopping at all stations.
 8:20 A. M.—Arrive Batavia, 9:04 A. M.; Buffalo, 9:55 A. M.; Cleveland, 2:30 P. M.; Pittsburgh, 4:25 P. M.; Detroit, 3:00 P. M.; Hamilton, Ont., 12:28 P. M. (except Sunday); Toronto, Ont., 1:40 P. M. (except Sunday).
 10:05 A. M.—Arrive Batavia, 10:49 A. M.; Buffalo, 11:40 A. M.
 11:16 A. M.—Arrive Buffalo, 12:55 P. M.; Cleveland, 5:30 P. M.; Toledo, 8:20 P. M.; Chicago, 1:15 A. M.; Detroit, 7:25 P. M.; Pittsburgh, Pa., 7:35 P. M.; Hamilton, Ont., 4:20 P. M.; Toronto, Ont., 5:30 P. M.
 12:40 P. M.—"Inter-City Express" (except Sunday), arrive Batavia, 1:25 P. M.; Buffalo, 2:15 P. M.
 2:57 P. M.—"The Lake Erie," arrive Batavia, 3:39 P. M.; Buffalo, 4:30 P. M.; Pittsburgh, 10:30 P. M.
 2:58 P. M.—Except Sunday; arrive Buffalo, 5:05 P. M., stopping at intermediate stations.
 4:05 P. M.—Empire State Express (except Sunday), arrive Buffalo, 5:30

P. M.; Cleveland, 9:50 P. M.; St. Louis, 1:55 P. M.; Hamilton, Ont., 8:25 P. M.; Toronto, Ont., 9:35 P. M.

5:00 P. M.—Except Sunday for Niagara Falls, stopping at all stations.
 5:36 P. M.—Arrive Buffalo, 7:15 P. M.; Cleveland, 11:52 P. M.; Toledo, 2:50 A. M.; Chicago, 7:40 A. M.; Cincinnati, 6:55 A. M.
 6:10 P. M.—Arrive Buffalo, 8:35 P. M., stop-
 6:54 P. M.—Arrive Buffalo, 8:45 P. M.; Detroit, 2:18 A. M.; Chicago, 8:26 A. M.
 9:08 P. M.—Arrive Buffalo, 10:45 P. M.
 9:59 P. M.—Arrive Buffalo, 11:40 P. M.; Cleveland, 4:30 A. M.; Detroit, 5:35 A. M.; Chicago, 1:00 P. M.; Pittsburgh, 7:25 A. M.
 10:25 P. M.—Twentieth Century Limited (Pullman cars only), arrive Chicago, 9:45 A. M.
 10:49 P. M.—(Pullman cars only), arrive Cleveland, 4:20 A. M.; Toledo, 7:25 A. M.; Columbus, 7:20 A. M.; Dayton, 8:04 A. M.; Cincinnati, 9:30 A. M.; Pittsburgh, 7:25 A. M.

FALLS ROAD

5:25 A. M.—Arrive Albion, 6:29 A. M.; Medina, 6:51 A. M.; Lockport, 7:16 A. M.
 11:25 A. M.—Except Sunday, arrive Albion, 12:25 P. M.; Medina, 12:44 P. M.; Lockport, 1:15 P. M.
 6:12 P. M.—Arrive Albion, 7:15 P. M.; Medina, 7:36 P. M.; Lockport, 8:03 P. M.

ONTARIO DIVISION (WEST)

5:30 A. M.—For Niagara Falls via Hilton and Lyndonville, stopping at all stations.
 5:00 P. M.—Except Sunday for Niagara Falls, stopping at all stations.

WEST SHORE R. R.

5:15 A. M.—Arrive Buffalo, 8:00 A. M., stopping at all stations.
 5:38 P. M.—Arrive Buffalo, 7:20 P. M., stopping at all stations.

Trains leave N. Y. C. Sta., Central Ave.

Via N. Y. C., Canandaigua and P. R. R.
 6:30 A. M.—Daily, except Sunday, for Canandaigua, change to Pennsylvania for Elmira, Harrisburg, Baltimore, Washington and Philadelphia. Change at Philadelphia for Atlantic City. Parlor car Canandaigua to Harrisburg.
 12:23 P. M. (Noon)—Daily, except Sunday, for Canandaigua; change to Pennsylvania for Elmira, Harrisburg, Baltimore, Washington and Philadelphia. Change at Philadelphia for Atlantic City.
 7:00 P. M.—Daily for Canandaigua; change to Pennsylvania for Elmira, Harrisburg, Baltimore, Washington and Philadelphia. Change at Philadelphia for Atlantic City. Sleeping car, Canandaigua to Philadelphia, and Rochester to Washington.

PENNSYLVANIA RAILROAD

Station, 357 Main St. West, Tel., MAIN 8174
 Take West Ave., Arnett or Genesee St. Cars
 Trains leave West Ave. Station

SOUTHWARD

8:05 A. M.—Daily to Olean, Portageville, Letchworth Park, Portage Falls and all way stations.
 4:40 P. M.—Daily for Olean and all way stations.

ROCHESTER AND OLEAN WITH CONNECTIONS AT MT. MORRIS

| | | |
|----------------------|------------|------------|
| Mt. Morris, Lv. | 9:37 A. M. | 6:12 P. M. |
| Sonyea | 9:45 A. M. | 6:20 P. M. |
| Olean | 1:00 P. M. | 9:30 P. M. |
| Olean | 5:36 A. M. | 3:28 P. M. |
| Sonyea | 8:13 A. M. | 6:20 P. M. |
| Mt. Morris | 8:20 A. M. | 6:27 P. M. |

LEHIGH VALLEY RAILROAD

Stations, Court Street Bridge, Tel. MAIN 1633
 Trains leave L. V. Depot, Court St. Bridge

WESTWARD

5:20 A. M.—Daily to Rochester Jct., connecting with main line train for Buffalo, Western and Canadian points.
 8:50 A. M.—Daily to Rochester Junction, connecting with main line for Buffalo, Western and Canadian points.
 10:20 A. M.—Daily to Rochester Jct., connecting with main line train to Buffalo and way stations.
 5:20 P. M.—Daily to Rochester Jct., connecting with main line train to Buffalo and points west.
 9:25 P. M.—Daily to Rochester Jct., connecting with main line train to Buffalo and all points west.

EASTWARD

6:20 A. M.—Daily to Rochester Jct., connecting with main line train for New York, Philadelphia and principal intermediate stations.
 7:50 A. M.—Daily through local train to Sayre via Ithaca.
 9:00 A. M.—Daily local train to Hemlock.
 10:20 A. M.—Daily to Rochester Jct., connecting with the Black Diamond for New York, Philadelphia and principal intermediate stations.
 5:20 P. M.—Daily local train to Hemlock, connecting at Rochester Jct. with local train for Sayre via Ithaca.
 9:25 P. M.—Daily to Rochester Jct., connecting with main line train for New York and Philadelphia, Pa., with through sleepers to those points from Rochester.

ERIE RAILROAD

Passenger Station, Court St., near Exchange
 7:00 A. M.—Daily, to Corning, Elmira, Binghamton, Port Jervis, Middletown, Paterson, Passaic and New York
 7:00 A. M.—Daily, to Avon, Genesee and Mt. Morris; on week days makes connection at Mt. Morris for Dansville

8:10 A. M.—Week days to Avon, Genesee and Mt. Morris.
 9:10 A. M.—Sundays only, to Avon, Genesee and Mt. Morris.
 9:40 A. M.—Week days, to Avon, Genesee, Mt. Morris.
 9:40 A. M.—Week days, to Caledonia, LeRoy, Batavia, Attica, Alden and Buffalo. Connecting for Jamestown.
 11:15 A. M.—Daily except Saturday, to Avon, Genesee and Mt. Morris.
 12:35 P. M.—Saturday only, to Avon, Genesee and Mt. Morris.
 2:15 P. M.—Daily, to Avon, Genesee and Mt. Morris.
 4:10 P. M.—Daily, to Avon, Genesee and Mt. Morris. On week days makes connection at Mt. Morris for Dansville.
 4:10 P. M.—Week days, to Caledonia, LeRoy, Batavia, Attica, Hornell, Alden and Buffalo.
 5:15 P. M.—Week days, to Avon, Genesee, Mt. Morris.
 5:40 P. M.—Daily, to Corning, Elmira, Binghamton, Port Jervis, Middletown, Paterson, Passaic and New York.
 6:15 P. M.—Daily, to Avon, Genesee and Mt. Morris.
 8:15 P. M.—Daily, to Avon, Genesee and Mt. Morris.
 11:00 P. M.—Sunday only, to Avon, Genesee and Mt. Morris.
 11:30 P. M.—Week days, to Avon, Genesee and Mt. Morris.

ROCHESTER INTERURBAN BUS CO., INC.
 Dansville and Hornell Division

Leave Dansville Monday to Saturday, inclusive, 7:30 A. M.; 2:00 P. M., arriving Hornell at 8:15 A. M.; 2:45 P. M. Extra trip Saturday, leaving Dansville 7:10 P. M., arriving Hornell at 7:55 P. M.
 Sundays and holidays leave Dansville 2:00 P. M., arriving Hornell 2:45 P. M.
 Leave Hornell Monday to Saturday, inclu-

sive, 9:30 A. M., 4:15 P. M., arriving Dansville 1:15 A. M., 5:00 P. M. Extra trip Saturday, leaving Hornell 10:45 P. M., arriving Dansville 11:30 P. M.
Sundays and holidays leave Hornell 4:15 P. M., arriving Dansville 5:00 P. M.

DANSVILLE and MT. MORRIS R. R.

Leave Rochester 7:00 A. M.; 4:10 P. M. daily, except Sunday. Second class 5:50 A. M. daily except Sunday.
Leave Mt. Morris—8:30 A. M.; 5:40 P. M. daily, except Sunday. Second class (baggage only, no passengers), 10:20 A. M. daily, except Sunday.

Arrive Dansville 9:10 A. M.; 6:20 P. M. daily, except Sunday. Second class (baggage only, no passengers), 11:25 A. M. daily, except Sunday.

Leave Dansville 7:40 A. M.; 3:15 P. M. daily, except Sunday. Second class (baggage only, no passengers), 8:10 A. M. daily, except Sunday.

Leave Mt. Morris 8:30 A. M.; 4:10 P. M. daily, except Sunday. Second class, 10:30 A. M. daily, except Sunday.

Arrive Rochester 9:35 A. M.; 5:35 P. M. daily, except Sunday. Second class, 1:10 P. M. daily, except Sunday.

BUFFALO, ROCHESTER and PITTSBURGH RAILWAY

Station, Main St. West. West Ave. Genesee or Thurston Road Car. MAIN 4780

Leave Rochester daily 7:30 A. M., for Pittsburgh, stopping at intermediate points. Arrive Pittsburgh 6:10 P. M.

Leave Rochester 2:15 P. M. and 5:30 P. M. for Perry, stopping at intermediate points.

Leave Rochester daily (Pittsburgh Flyer) for Pittsburgh at 9:00 P. M., arriving at Pittsburgh at 7:40 A. M.

BUS LINES TIMETABLES

DEWEY AVENUE BUS LINE DAILY

Leave Dewey Loop—5:40, 6:00, 6:20, 6:40, 7:00, 7:20, 7:40, 8:00, 8:20, 8:40, 9:00, 9:40, 10:20, 11:00, 11:40 A. M.; (12:00*), 12:20, (12:40*), 1:00, 1:40, 2:20, 3:00, 3:40, 4:00, 4:20, 4:40, 5:00, 5:20, 5:40, 6:00, 6:20, 6:40, 7:00, 7:20, 8:00, 8:40, 9:20, 10:00, 10:40, 11:20, 12:00 P. M.

Leave Britton Road—6:00, 6:20, 6:40, 7:00, 7:20, 7:40, 8:00, 8:20, 8:40, 9:00, 9:20, 10:00, 10:40, 11:20, 12:00 A. M.; (12:20*), 12:20, (1:00*), 1:20, 2:00, 2:40, 3:20, 4:00, 4:20, 4:40, 5:00, 5:20, 5:40, 6:00, 6:20, 6:40, 7:00, 7:20, 7:40, 8:20, 9:00, 9:40, 10:20, 11:00, 11:40 P. M.; 12:20 A. M.

(*Saturday only).

SUNDAY

Leave Dewey Loop—7:00, 7:40, 8:20, 9:00, 9:40, 10:20, 11:00, 11:40 A. M.; 12:20, 1:00, 1:40, 2:20, 3:00, 3:40, 4:20, 5:00, 5:40, 6:20, 7:00, 7:40, 8:20, 9:00, 9:40, 10:20, 10:55, 11:30 P. M.; 12:05 A. M.

Leave Britton Road—7:20, 8:00, 8:40, 9:20, 10:00, 10:40, 11:20, 12:00 A. M.; 12:40, 1:20, 2:00, 2:40, 3:20, 4:00, 4:40, 5:20, 6:00, 6:40, 7:20, 8:00, 8:40, 9:20, 10:00, 10:38, 11:18, 11:48 P. M.; 12:20 A. M.

EAST AVENUE BUS COMPANY

Eastbound—Daily

Leave Rochester at 7:00, 7:30, 8:15, 9:00, 9:45, 10:30, 11:15 A. M.; 12:15, 1:00, 1:45, 2:30, 3:15, 4:00, 4:45, 5:15, 5:30, 6:15, 7:00, 7:45, 8:30, 9:30, 10:15, 11:00, 11:45 P. M.

Eastbound—Sundays and Holidays

Leave Rochester at 9:00, 10:30 A. M.; 12:15, 1:00, 1:45, 2:30, 3:15, 4:00, 4:45, 5:30, 6:15, 7:00, 7:45, 8:30, 9:30, 10:15, 11:00, 11:45 P. M.

Westbound—Daily

Leave Pittsford at 6:20, 6:50, 7:37, 8:15, 9:00, 9:45, 10:30, 11:15 A. M.; 12:15, 1:00, 1:45, 2:30, 3:15, 4:00, 4:30, 5:45, 5:30, 6:15, 7:00, 7:45, 8:30, 9:30, 10:15, 11:00 P. M.

Westbound—Sundays and Holidays

Leave Pittsford at 8:20, 9:45, 11:15 A. M.; 12:15, 1:00, 1:45, 2:30, 3:15, 4:00, 4:45, 5:30, 6:15, 7:00, 7:45, 8:30, 9:30, 10:15, 11:00 P. M.

Ride the BLUE BUS



Rochester--Batavia--Buffalo

Frequent, convenient service—every hour on the hour. Time-saving and enjoyable. Luxurious parlor car Safety Coaches, riding on air.

Terminal, Broad St. and South Ave.

(See timetables below)
For information, MAIN 2442



RIDGE-CULVER BUS LINE

Following is the official schedule of the new Irondequoit bus line, a subsidiary of the Street Railway system, and operating eastbound from St. Paul-Ridge to Hudson, Titus, Culver to Clifford Avenue; westbound, starting at Clifford-Culver north to Titus, west to Hudson, thence to Ridge-St. Paul.

Eastbound, leaving St. Paul and Ridge at *6:15, *7:15, 8:30, 9:30, 10:30, 11:30 A. M.; 12:30, 1:30, 2:30, 3:30, 4:30, 5:30, 6:30, 7:30, 8:30, 9:30, 10:30 P. M. Arriving Clifford Avenue at 6:40, 7:40, 8:55, 9:55, 10:55, 11:55 A. M.; 12:55, 1:55, 2:55, 3:55, 4:55, 5:55, 6:55, 7:55, 8:55, 9:55, 10:55 P. M.

Westbound, leaving Clifford Avenue at *6:40, *7:50, 9:00, 10:00, 11:00 A. M.; 12:00 M.; 1:00, 2:00, 3:00, 4:00, 5:00, 6:00, 7:00, 8:00, 9:00, 10:00, 11:00 P. M. Arriving St. Paul and Ridge at 7:05, 8:15, 9:25, 10:25, 11:25 A. M.; 12:25, 1:25, 2:25, 3:25, 4:25, 5:25, 6:25, 7:25, 8:25, 9:25, 10:25, 11:25 P. M.

BROWNCROFT DE LUXE SERVICE

Leave Browncroft daily at 7:15, 8:15, 9:15, 10:15, 11:15 A. M.; 3:30, 4:30, 5:30, 6:30, 7:45 P. M.

Leave Broad-Plymouth at 7:50, 8:50, 9:50, 10:50 A. M.; 4:05, 5:05, 6:05, 7:05 P. M.
No service on Sunday.

ROCHESTER, PARMA CORNERS AND HILTON

Leave Lake and Ridge Road for Hilton daily except Sundays and Holidays 5:50 A. M., 7:00 A. M., 12:30 P. M., 4:00 P. M., 6:30 P. M.

Daily except Sundays and holidays for Parma Corners only 9:30 A. M., 5:45 P. M.

Leave Hilton for Lake Avenue and Ridge Road. Leave Parma Corners 6:05 A. M., 10:10 A. M. Daily except Sundays and holidays 6:40 A. M., 7:50 A. M., 1:20 P. M., 5:30 P. M., 7:45 P. M.

Leave Lake Avenue and Ridge Road for Hilton Sundays and holidays 7:15 A. M., 9:45 A. M., 12:15 P. M., 2:45 P. M., 5:30 P. M., 7:45 P. M.

Leave Hilton for Lake Avenue and Ridge Road Sundays and Holidays 8:45 A. M., 11:15 A. M., 1:30 P. M., 4:15 P. M., 6:45 P. M., 9:15 P. M. In addition to the above a bus leaves Parma Corners at 6:45 A. M.

ROCHESTER, HOLCOMB & PENN YAN

Leave Rochester for Holcomb, Monday to Saturday, inclusive, 10:00 A. M., 3:30 P. M., 5:00 P. M.

Leave Rochester for Penn Yan daily at 5:00 P. M.

Leave Rochester for Holcomb, Sundays and holidays, 10:00 A. M., 7:00 P. M.

ROCHESTER & LEROY LINE

Leave Rochester for Le Roy daily, except Sundays and holidays, 9:00 A. M., 12:30 P. M., 4:30 P. M., 6:15 P. M.

Leave Rochester for Le Roy, Sundays, 9:00 A. M., 12:30 P. M., 4:30 P. M., 6:15 P. M., 7:15 P. M.

Leave Rochester for Le Roy Saturdays, Sundays and holidays, 11:30 P. M.

ROCHESTER, DANSVILLE & HORNEILL

Leave Rochester for Dansville and Hornell daily at 7:30 A. M., 4:00 P. M.

Leave Rochester for Livonia, Monday and Saturday, inclusive, 9:00 A. M., 5:00 P. M.
Leave Rochester for Livonia, Sundays and holidays, 7:30 A. M., 4:00 P. M.

ROCHESTER, BATAVIA, BUFFALO BLUE BUS

Leave Rochester daily for Buffalo and intermediate points: 8:00, 9:00, 10:00, 11:00 A. M.; 1:00, 2:00, 3:00, 4:00, 5:00, 6:00 P. M. The 2:00 P. M. bus does not run Sundays.

The 3:00, 4:00, 5:00 P. M. buses run direct to and stop at Akron.

The "Owl" car for Batavia leaves Rochester at 9:30 P. M. daily.

Leave Buffalo for Rochester daily: 8:00, 10:00, 11:00 A. M.; 12:00 M.; 1:00, 2:00, 4:00, 5:00 P. M. The 11:00 A. M. runs from Batavia only on Sundays.

Leave Buffalo for Batavia, in addition to above schedule, 9:00 A. M.; 8:00, 6:00, 9:30, 11:15 P. M. daily.

Leave Bergen for Byron, South Byron, Batavia: 7:45 A. M.; 4:10 P. M.

Leave Batavia for South Byron, Byron, Bergen: 7:15 A. M.; 12:40 noon; 4:30 P. M. The 12:40 does not run Sundays.

Lee Road and Lyell Avenue

Leave Lee Road Terminal daily (westbound) 6:00, 6:40, 7:20, 8:00, 9:00, 10:00, 11:00 A. M.; 12:00 noon; 1:00, 2:00, 3:00, 4:00, 4:40, 5:20, 6:00, 7:00, 8:00, 9:00, 10:00 P. M.

Leave Lee Road Terminal Sunday (westbound) 7:00, 8:00, 9:00, 10:00, 11:00 A. M.; 12:00 noon; 1:00, 2:00, 3:00, 4:00, 5:00, 6:00, 7:00, 8:00, 9:00, 10:00 P. M.

Leave Glide and Lyell daily (westbound) 6:10, 6:50, 7:30, 8:10, 9:10, 10:10, 11:10 A. M.; 12:10, 1:10, 2:10, 3:10, 4:10, 4:50, 5:30, 6:10, 7:10, 8:10, 9:10, 10:10 P. M.

Leave Glide and Lyell Sunday (westbound) 7:10, 8:10, 9:10, 10:10, 11:10 A. M.; 12:10, 1:10, 2:10, 3:10, 4:10, 5:10, 6:10, 7:10, 8:10, 9:10, 10:10 P. M.

Leave Howard Road Terminal daily (eastbound) 6:20, 7:00, 7:40, 8:30, 9:30, 10:30, 11:30 A. M.; 12:30, 1:30, 2:30, 3:30, 4:30, 5:30, 6:30, 7:30, 8:30, 9:30, 10:30 P. M.

Leave Howard Road Terminal Sunday (eastbound) 7:30, 8:30, 9:30, 10:30, 11:30 A. M.; 12:30, 1:30, 2:30, 3:30, 4:30, 5:30, 6:30, 7:30, 8:30, 9:30, 10:30 P. M.

Leave Glide and Lyell daily (eastbound) 6:30, 7:10, 7:50, 8:40, 9:40, 10:40, 11:40 A. M.; 12:40, 1:40, 2:40, 3:40, 4:30, 5:10, 5:50, 6:40, 7:40, 8:40, 9:40, 10:40 P. M.

Leave Glide and Lyell Sunday (eastbound) 7:40, 8:40, 9:40, 10:40, 11:40 A. M.; 12:40, 1:40, 2:40, 3:40, 4:40, 5:40, 6:40, 7:40, 8:40, 9:40, 10:40 P. M.

Chili Avenue and Glide Street

Leave Chili Avenue daily 6:10, 6:50, 7:30, 8:10, 9:10, 10:10, 11:10 A. M.; 12:10, 1:10, 2:10, 3:10, 4:10, 4:50, 5:30, 6:10, 7:10, 8:10, 9:10, 10:10, 11:10 P. M.

Leave Chili Avenue Sunday 7:10, 8:10, 9:10, 10:10, 11:10 A. M.; 12:10, 1:10, 2:10, 3:10, 4:10, 5:10, 6:10, 7:10, 8:10, 9:10, 10:10, 11:10 P. M.

Leave Lyell Avenue daily 5:50, 6:30, 7:10, 7:50, 8:40, 9:40, 10:40, 11:40 A. M.; 12:40, 1:40, 2:40, 3:40, 4:30, 5:10, 5:50, 6:40, 7:40, 8:40, 9:40, 10:40 P. M.

Leave Lyell Avenue Sunday 6:40, 7:40, 8:40, 9:40, 10:40, 11:40 A. M.; 12:40, 1:40, 2:40, 3:40, 4:40, 5:40, 6:40, 7:40, 8:40, 9:40, 10:40 P. M.

TELL 'EM YOU SAW IT IN "THIS WEEK"

Shoppers and Buyers Guide

Where to Get Your Copy Each Week
This Week in Rochester is Your Book

AUTOMOBILES

Geo. W. Henner, "Oldsmobile," 1000
Main St. E.
Mortimore Motor Car Co., "Nash,"
336 East Ave.

AUTO TRIMMING

Chas. T. Higgins, 16 Gardiner Park.

BANKS

Lincoln Alliance Bank, Main at
Stone St.
Rochester Savings Bank, 47 Main
St. W.
Central Trust Co., Central Trust
Bldg.
Merchants Bank, 125 Main St. E.
Genesee Valley Trust Co., 21 Ex-
change St.
Monroe County Savings Bank, 35
State St.
National Bank of Rochester, 32
State St.
Rochester Trust & Safe Deposit Co.,
1 Main St. W.

BEAUTY SHOPS

Edyth-Ann, 332 Lawless Bldg.

CATERERS

Marlowe & Shafer, Phone Glen. 638.

CARTING

Sam Gottry Carting Co., Main 1412.
B. J. Henner, 94 Front St.
Raz Delivery, Stone 357-358.

CHILDREN'S CLOTHING

Jolie Frocks, 38 Scio St.

CIGAR STORES

Jack Wishman's (2 Stores), 89 Main
St. W., Clinton & Court St.
Chas. Kasdin, Main E. and Scio St.

CLEANING AND PRESSING

Watts Dry Cleaning Co., 322 Cot-
tage St.
Marriotts Dry Cleaning Co., 414
Genesee St.

COAL

Morphy Coal Co., 731 Clinton Ave. N.
Williams Coal Co., 871 Dewey Ave.

CONFECTIONS

Whittles', 38 East Ave. and 44 Main
St. E.

DEPARTMENT STORES

Sibley, Lindsay & Curr Co., Main
St. E.
McCurdy & Co., Main St. E. at Elm.
E. W. Edwards & Son, 132 Main E.

Duffy-Powers Co., Main St. W. at
Fitzhugh.

DRUGS

Kleinhans Drug Store, 895 Clinton
Ave. N.
Gilmore's Germicide, Prospect St.

ELECTRICAL APPLIANCES

Rochester Gas & Electric Corp., 89
East Ave.
Hickson Electrical Co., Inc., 36
South Ave.

ENGRAVERS

Culver Engraving Co., 59 East
Main St.

FLOORS

Abner Adams, 126 Cutler Bldg.

FURNACES

Sterling Heater Co., 183 East Ave.

FURNITURE

H. B. Graves, 78 State St.
Howe & Rogers Co., 89 Clinton St.
Weis & Fisher Co., 59 State St. and
879 Clinton Ave. N.
Wallace Furniture Co., 453 Main
St. W.
W. T. Sinden, 121 West Main St.

FURS

B. Forman and R. H. Galinsky, 657
Clinton Ave. North.

GAS STATIONS

Fred's Gas Station, Platt St. (near
St. Paul St.)

HEMSTITCHING AND PLEATING

Millers, Room 244, Mercantile Bldg.

HOTELS

Hotel Seneca, 26 Clinton Ave. S.
Hotel Rochester, 95 Main St. W.
Hayward Hotel, 19 Clinton Ave. S.
Richford Hotel, 67 Chestnut St.
Osborn House, 104 South Ave.
New Windsor Hotel, 269 Clinton N.

JEWELERS

Sunderlin Jewelry Store, 350 Main
St. E.

LEATHER GOODS

Geo. A. Miller, 137 East Ave.

MEN'S CLOTHING

National Clothing Co., 159 Main E.
McFarlin Clothing Co., 195 Main E.
Union Clothing Co., 115 Main St. E.
Acme Sales Co., 95 Main St. E.

OPTICIANS

B. B. Clark, 12 Gibbs St.

PARKING STATIONS

Rochester Auto-Inns, 39 Stone St.;
Open-Air Branch, Stillson St.,
off Main.

PHOTOGRAPHIC SUPPLIES

Rowe-Rochester Camera Exchange
68 South Ave.

RESTAURANTS

Odenbach's, 14 South Ave.
Odenbach's Coffee Shoppe, 19 Clin-
ton Ave. S.
H. B. Sandwich Shop, 67 Clinton
Ave. S.
Samovar, 243 Alexander St.
Richford Cafeteria, Hotel Richford
Pine Tree Tea Room, 140 East Ave
Pine Tree Branch, 291 East Ave.
Cornucopia Tea Room, 60 Broad St
Louise Shop, 63 Spring St.
Vegetarian Cafeteria and Bakery,
157 Franklin St.
Alexander, 355 East Ave.
Bennett's Seafood and Oyster
House, 78 Main St. West.
The Sea Shell, 410 E. Main St.

RUG CLEANING

Rochester Rug Works, 182 Atlantic
Ave.
Gray Carpet Cleaning Co., 251 San-
ford St.

SHOES

Gould, Lee & Webster, 293 Main E
Walk-Over Shoe Store, 324 Main St
East.

SHOE SHINING

B. A. Speedy, 216 Court St.;
2 Plymouth Ave. N.

THEATERS

Lyceum, Clinton Ave. S.
Temple, 35 Clinton Ave. S.
Eastman, 425 Main St. E.
Regent, 65 East Ave.
Piccadilly, 33 Clinton Ave. N.
Gayety, 52 N. Fitzhugh St.
Corinthian, Corinthian St.
Riviera Theater, Lake and Flower
City Park.

TIRES

Fred's Station, Platt near St. Paul



100
STORES



100
STORES

HART'S

100th Store Celebration

“Rochester's Greatest Grocers”

THE rapid growth of HART'S Self-Serving Grocery Stores is more like a romance than simply the story of enterprise, enthusiasm and a desire to serve and save money for the people. HART'S Stores meet the growing demand for Quality Foods at cut prices.

100 STORES

Owned and operated by Home Folks

100 STORES

Conveniently located in every shopping section

100 STORES

Known for price cutting on Nationally Advertised Food Products

100 STORES

That give valuable coupons with every purchase

WATCH

The Papers for Celebration News



100
STORES



100
STORES