



“Readin, Ritin and Rithmetic”

# PICTORIAL WHEATLAND



### **SCOTTSVILLE SCHOOL**

The sixth school house located in Scottsville at the corner of Beckwith Avenue and Rochester St. built in 1927, in 1964 an addition was added to the school and the school was named the Thomas J. Connor Elementary School.



### **SCOTTSVILLE SCHOOL**

The seventh school house located in Scottsville at the corner of Scottsville-Chili Rd. and North Road was built in 1958. The school is known as the Wheatland-Chili Jr.-Sr. High School.

*Due to a printing error, these schools were left out. They should appear between pages 7 and 8.*

By

MRS. ELLA K. McGINNIS  
Wheatland Town Historian

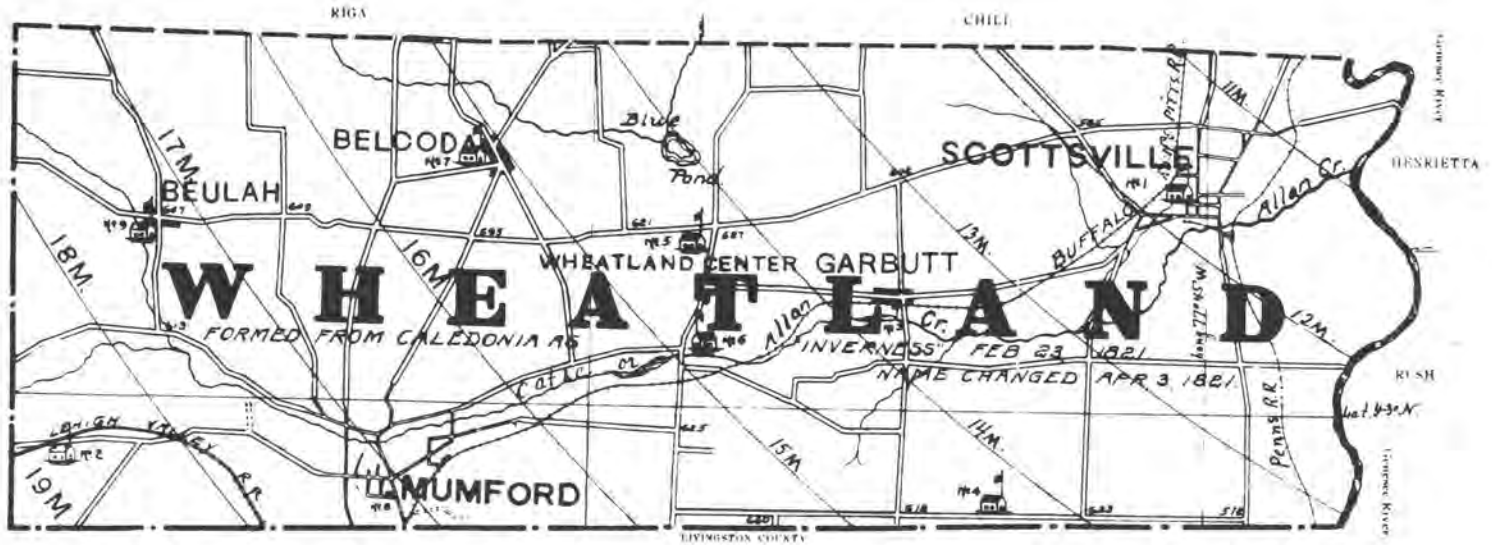
1981

Volume VI

## **PICTORIAL WHEATLAND**

This booklet represents a portion of the pictures of the town of Wheatland and many hours of search and research. The generosity of the people of Wheatland in lending their treasured old pictures and furnishing information about them is appreciated. A special thank you to Jerome Warren for copying the original pictures used in this booklet and for the Wheatland files. A booklet of this sort obviously owes large debts to many people.

Mrs. Ella K. McGinnis  
*Town of Wheatland Historian*  
Booklet No. 6-1981



MAP SHOWING THE LOCATION OF THE SCHOOLS



Site of the first school west of the Genesee River. Children unveil boulder north of Mumford at the intersection of Scottsville - Mumford Road and Oatka Trail, on the site of the first school house west of the Genesee River. Erected by Scottish pioneers in what was part of Caledonia in 1803. Descendants of the first scholars are shown unveiling a memorial boulder, July 18, 1926. They are Elizabeth Nichols, Jane MacPherson, Mary MacKenzie, Sandy MacPherson, George Campbell and John MacPherson.

## WHEATLAND SCHOOLS

PETER SHEFFER was elected the first school commissioner of the Town of Wheatland in 1798 and in 1799 a school committee was elected. The committee consisted of the following men, Joseph Morgan Josiah Fish, Chapman Hawley.

The school laws passed by the State Legislature in 1812 required the various towns to form school districts and provide for the establishment of common schools and district schools and their financing and supervision. At the time there were three schools in what is now the Town of Wheatland. One in Mumford, one in Scottsville and one in Belcoda.

The first schoolhouse west of the Genesee river was built in 1803. It was located on the Creek road north of Mumford, about one hundred rods north of the bridge that spans the Oatka Creek. The land was obtained from John McVean. The school was constructed of logs, the building also served as a place of worship on Sundays by the Scotch settlers. The first teacher was Alexander McDonald and it is said that he never spoiled a child by sparing the rod.

The first school in Scottsville was built of logs in 1805, it was located in the triangle made by Rochester St., North road and Grove St. opposite Browns Grove. John Smith was the first teacher, followed by Elizabeth Garbutt. The school was destroyed by fire in 1808 while Elizabeth Garbutt was the teacher.

The first school in Belcoda was a log school house that was supposed to have stood on the north west corner of Belcoda and Harmon roads. It was built sometime before 1811.

## SCOTTSVILLE SCHOOLS – DISTRICT NO. 1

The first school house built in Scottsville was in 1805, it was built of logs and located at the southern end of the triangle made by Rochester St. North road and Grove St., about where the water tower now stands.

The first teacher was John Smith followed by Elizabeth Garbutt. The log school house was destroyed by fire in 1808 while Elizabeth Garbutt was the teacher. The school was then moved to a newly erected barn on the farm of Powell Carpenter located just west of the village.

In 1810 a new small frame school house was built upon the farm of Reuben Heath on North Road.

In 1820 a one story school house was erected on the north west corner of Rochester Street and Genesee Street. This was used for a school until 1841 when it was abandoned as a school and converted to other use until 1862 when it was demolished.

The next school in Scottsville was a one story building located on the south side of Genesee Street just east of Rochester Street. The east half built in 1841 and the west side added in 1844. The east half consisting of two rooms and an ante room. In 1844 when the west half of the school on Genesee Street was added on the enlarged school consisted of three large rooms, a library and hall. It was used until a new school was built on Browns Avenue in 1869. The school house on Genesee Street is now used for a dwelling.

In 1869 a new two story brick school was built on the west side of Browns Avenue at a cost of \$15,000. The south side addition was built in 1898 at a cost of \$5,000. The first Principal in the new school was Mr. Phitts followed shortly by Mr. Comford and before the end of the year by Mr. Arthur G. Slocum.

The members of the board of Trustees in 1883-84 were John Shoudler, D.D.S. Brown, and D.B. Grey. The Faculty consisted of E. M. Abell, Principal, Miss Beula E. Mordoff, Preceptress, Mrs. M.B. Abell, Intermediate Department, Miss E. M. Dorr, Second Department, Mrs. H.M. Sheffer, Primary Department.

The course of study shall consist of eleven years work. Each years' work shall constitute a grade and these shall be numbered from one to eleven, beginning at the lowest.

The school shall be divided into five departments as follows-

1. a primary department, to consist of the 1st, 2nd, and 3rd grades
  2. a second department, to consist of the 4th and 5th grades
  3. an intermediate department, to consist of the 6th, and 7th grades
  4. a grammar department to consist of the 8th and 9th grades
  5. an academic department, to consist of the 10th and 11th grades
6. a certificate, signed by the teacher of the department and the Principal, shall be given to each pupil who shall have satisfactorily completed the work of any grade.
  7. scholars shall be classified, upon entering by examination by the Principal.
  8. the failure of any pupil to appear at any examination, except for reasonable excuse shall forfeit the certificate.
  9. this certificate will be issued on an average standing of 75% for the year, in each study.
  10. examination in the 1st and 2nd grades shall be oral, all others shall be written.

By order of the Board of Trustees: John Shoudler, D.D.S. Brown, D.B. Grey.

The school on Browns Avenue, erected in 1869 became inadequate. It was finally voted to purchase property on the corner of Beckwith Avenue and Rochester Street. A new school was built in 1927 at a cost of \$225,000.00.

The Browns Avenue school plot that was purchased August 12th, 1868 from the late Dyer D.S. Brown and wife with reversionary rights, in 1929 having ceased to be used for school purposes the Brown heirs were willing to convey their reversionary rights in the whole property to the school district for a consideration of \$1500.00. The Board of Education received an offer for the building and a portion of the adjoining property from the trustees of Oatka Lodge of Masons which was accepted.

The new school was built on the corner of Beckwith Avenue and Rochester St. in 1927. The school was known as the Scottsville High School, with elementary students placed in other buildings in the Village and Ballantyne school. A new addition was added to the school in 1964 and the school was named the Thomas J. Connor elementary school. Mr. Connor taught in the Scottville school system for 41 years and was Principal for many years. With the advent of centralization in the Town of Wheatland, the school on Beckwith Avenue became inadequate.

A new school was built on the corner of Scottsville-Chili Road and North Road in 1958. The new school is known as the Wheatland-Chili Jr.-Sr. High School.



### **SCOTTSVILLE SCHOOL**

The fourth school house located in Scottsville was a one story building located on the south side of Genesee St. just east of Rochester St. The east half built in 1841 and the west side added in 1844, it is now used for a dwelling.



### **SCOTTSVILLE SCHOOL**

The fifth school house located in Scottsville was a two story brick building located on the west side of Browns Avenue, built in 1869



## SCOTTSVILLE SCHOOL

This picture, taken in 1908, shows the wing built on the south side of the school building in 1898.



## SCOTTSVILLE SCHOOL

The Fifth school Scottville located on the west side of Browns Avenue as it looked when sold to the Oatka Lodge of Masons Scottville, New York.



**Old photo found by George Gray while carpentering, shows  
Scottsville Public School students of 1891 posed in front of  
Masonic Temple**

Assuming the children posed here were between 6 and 12 at the time, they'd now be 72 to 78 years old. If any of you recognize a face or faces, we'd appreciate hearing from you. The sign there on the left, in case it doesn't come out clear says, 'PUBLIC SCHOOL, SCOTTSVILLE, N.Y., OCT. 28, 1891.' That's apparently the teacher standing on the left.



**UNION SCHOOL SCOTTSVILLE - October, 1891**

1. Adda Carver, 2. ?, 3. ?, 4. Nell Ballentine, 5. ?, 6. Edith Ballentine, 7. ?, 8. Mabel Giles, 9. ?, 10. Clara Budlong, 11. ?, 12. ?, 13. ?, 14. Mary Franklin, 15. ?, 16. Florence Budlong, 17. Lolla Burns, 18. Principal-Frank Brown, 19. Hattie Hetzer, 20. Esmah Nicholson, 21. ?, 22. Bess Hart, 23. Edith Canfield, 24. Della Smith, 25. Claire Gilson, 26. Eliza Hogg, 27. ?, 28. Myra Wells 29. Majd Slocum, 30. Miss Reed, 31. Olive Mowson, 32. Frannie Nicholson, 33. Susie Cox 34. ?, 35. ?, 36 Bess Trayhern, 37. Eugena Brown 38. Clyde Hart, 39. Dwight Smith, 40. Dave Salyerds, 41. Walter Pedley, 42. ?, 43. Earl Clapp, 44. Steve Wells, 45. Ralph Cox, 46. George Walsh, 47. Roy Garbutt, 48. ?, 49. Mort Cox, 50. ?, 51. ?, 52. Howard Cox, 53. ?, 54. Walter Gridley, 55. Louis Estes, 56. ?, 57. Ellsworth Severance, 58. Roy Dunn, 59. Morgan Perry, 60. Leon Brace, 61. ?, 62. ?, 63. ?, 64 Bert Gray.



## SCOTTSVILLE SCHOOL

1. Warren Smith, 2. Edson Horton, 3. Fred Clark, 4. Floyd Butler 5. Clarence Hahn, 6. Hazel Stokoe, 7. Helen Budlong, 8. Mildred Ewart, 9. Ethel Shillinger, 10. Sarah Cox, 11. Elizabeth Harper, 12. Helen McAmmond, 13. Agnes Kelly, 14. Ruth Cox, 15. Lucy Freidell, 16. Maud Stewart, 17. Fanny Tunison, 18. Helena Price, 19. Eva Johnson, 20. Ellen Karges, 21. Isabel Stokoe, 22. Gertrude Evans, 23. Elizabeth Garbutt, 24. Dorothy Martin, 25. Edith Stokoe, 26. Irene Rossiter, 27. Clara Beasley, 28. Marion Moore, 29. Frances Rulifson, 30. Miss Mary Agnes O'Brien, 31. Herbert T. Comfort, 32. Robert Murphy, 33. Clarence Pedley, 34. Joe Hynes, 35. Clarence Stokoe, 36. Mike Hines, 37. Roscoe Brown, 38. John Scofield, 39. Howard Shillinger, 40. Clarence Moore, 41. Joe Farrell, 42. Margaret Brown, 43. Miss McParlin.



## SCOTTSVILLE SCHOOL 1900

1. ?, 2. Reming Ellis, 3. Ward Lounsberry, 4. ?, 5. Warren Smith, 6. ?, 7.?, 8.?. Maguire, 9. ?, 10. Helen ?, 11. Gertrude Evans, 12. ?, 13. ?, 14. Margaret Clydesdale, 15. Irene Rossiter, 16. Frances Alexander, 17. ?, 18. ?, 19. ?, 20. Ralph Smith, 21. Fred Clark, 22. ?, 23. ?, 24. ?, 25. ?, 26. ?, 27. ?, 28. (Teacher) ?, Bowerman, 29. ?, 30. ?, 31. Matt Thompson, 32. Oliver Martin



### SCOTTSVILLE SCHOOL -- 1907-08

1. Fred Tyler, 2. ?, 3. ?, 4. ? Kelly, 5. ?, 6. Joseph Clark, 7. ?, 8. John Bly, 9. Fred Kingsbury, 10. ?, 11. ?, 12. ?, 13. ? 14. Alice Warren, 15. ?, 16. Blanch Carver, 17. Fanny Tyler, 18. Harlowe Cox, 19. Helen Cox, 20. ?, 21. ?, 22. ?, 23. ?, 24. ?, 25. ?, 26. ?, 27. Earl Smith, 28. ?, 29. ? McCarthy, 30. Mary Murphy, 31. Helen Kingsbury, 32. ?, 33. ?, 34. ?, Houghtaling, 35. ?, 36. ?, 37. ?, 38. ? Hynes, 39. ?, 40. ?, 41. Ruth Comstock, 42. Chester Comstock, 43. Mary Smith, 44. Fletcher McAmmond, 45. ?, 46. Katherine McVean, 47. ?, 48. ?, 49. ?, 50. ?, 51. Delbert McCarthy, 52. ?, 53. Edson Wahl, 54. ?, 55. Howard Hallock, 56. ?, 57. ?, 58. William Osmun, 59. ?, 60. ?, 61. ?, 62. ?, 63. Alberta Osmun, 64. Esther Stamm, 65. ?, 66. ?, 67. ?, 68. ?



### SCOTTSVILLE SCHOOL - 1910 - 1911 4th and 5th Grades

1. Loretta Wiesner, 2. Evelyn Stokoe, 3. Mary Murphy, 4. Ruth Hallock, 5. Judith Olmstead, 6. Mary Smith, 7. Fanny Tyler, 8. Mabel Casey, 9. Louise Olmstead, 10. Margaret Cook, 11. Dell Price, 12. Marie Rossiter, 13. Louise Marlow, 14. Kathryn McVean, 15. Louise Lempke, 16. Ethel Anderson, 17. Margaret Maxwell, 18. Anne Rush, 19. Earl Smith, 20. Harold Cox, 21. William Weiland, 22. Remington Resch, 23. Harold Willis, 24. Ralph Arthur, 25. Frank Cook, 26. Edson Wahl, 27. Edmund Casey, 28. Arthur Miller, 29. Chester Comstock, 30. Harold Kelly, 31. Ernest Hongtaling, 32. Ward Lounsberry, 33. Glenn Despard, 34. Howard Hallock, 35. Clarence Ely, 36. Robert Walker



### SCOTTSVILLE HIGH SCHOOL - 1914-1917

1st Row L-R Eva Johnson, Olive Sickles, Isabel Osman, Margaret Smith, Louise Walker, Hortense Hallock, Ethel Comstock.

2nd Row L-R Edna Gordon, Helen Moranz, Frances Hondorf, Ruth McVean, Ruth Budlong, Eleanor Garbutt, Blanche Price, Madge Price, Margaret Hallock, Ruth Houghtaling.

3rd Row L-R Alice Bronson, Mary Hines, Martha Giles, Esther Hallock, Ruth Coates, Grace Martin, Bertha Tunison, Kate Kelly, Ellen Karges, Margaret Garbutt, Edith Stokoe, Gertrude Johnson, Dorothy Cox.

4th Row L-R ?, Burton Dougherty, Roosevelt Price, Leo Rossiter, Martin Hynes, Louis Smith, Warren McCombs, Harold Dunn, Leland Connor.

5th Row L-R Elbert Tunison, Ralph Hohman, Ernest Hahn, Robert Murphy, Lester Kelly, 2 Teachers, 1. ?, 2. Miss Dangler



### BASEBALL - SCOTTSVILLE SCHOOL - 1912

Left to Right: Back Row:

1. Bob Murphy, 2. Delbert Thompson, 3. Ernest Hahn, 4. Professor John Dromman, 5. Ralph Holman, 6. Cornelius Schillinger, 7. John Coles,

Front Row: Left to Right:

1. Jack Eggleston, 2. Morris Horton, 3. Warren McCombs, 4. Stewart Warren



### SCOTTSVILLE SCHOOL BASKETBALL TEAM

Front Row L to R:

1. Bob Arnold, 2. Bud Resch

Middle Row L to R:

1. Louis Angeline, 2. Walter Stewart, 3. George Coates, 4. John Seeford, 5. Howard Tucker, 6. Cal. Hahn, 7. John Gallo

Back Row L to R:

1. Philip Abbott, 2. Ernie Swingle, 3. Penny Studeman, 4. Richard Seeford, 5. Herbert Mall, 6. John Allen, 7. (Coach) Bus Recordin



### SCOTTSVILLE SCHOOL

1. Betty Jarrett, 2. Ruth Maas, 3. Marion Maul, 4. Mildred Couse, 5. Genieve Schillinger, 6. Ina Landore, 7. Jack Malerk, 8. Alberta Dey, 9. Pauline Naas, 10. Rose Cacimise, 11. Bill Dunn

## FLINT HILL SCHOOL – DISTRICT NO. 2

The school house in District No. 2., known as the Flint Hill School was built in 1868. The deed dated August 11th, 1868, transfers the property from John Tearney to school trustees William N. Crosby, Mathew Murray and William Grant, for the sum of twenty-five dollars. This school was closed in 1942. It is now the home of Mr. & Mrs. Harold Geyer.

Prior to this school there was an earlier school in the district the exact location not known.

Mr. Asher Bennett Town Superintendent of Common Schools in the Town of Wheatland in 1855, gave to the trustees of District No. 2., Mr. Daniel Lawson, Joseph McCombs and William Robertson the sum of eleven dollars to be paid to the teacher Miss Louise M. Robinson, That being the amount appropriated to the district to pay the teacher.



Flint Hill School, District No. 2, located on the south side of Flint Hill Road. The school house has been converted and is now the home of Mr. & Mrs. Harold Geyer.



### FLINT HILL DISTRICT -- 1911

Teacher - Miss Rose Gaugle

Standing L to R: 1. Florence Stoddard, 2. Florence Adams, 3. Joseph Mccombs, 4. Leonard Adams, 5. Florence Johnston, 6. Margaret Grant, 7. Mary Belle Grant

Sitting L to R: 1. Mildred Pierson, 2. Thomas Neid, 3. Francis Neid, 4. Grace Adams, 5. Alfred Stoddard, 6. Roy Stoddard, 7. Harriet Adams

Front Row L to R: 1, Margurite Neid, 2. Marlin McClelland, 3. Jessie Grant



### FLINT HILL SCHOOL DISTRICT No.2

Frank Sheffer, William Busse, George Sheffer, Ruth Sheffer, Helen Sheffer, Vincent Neid, Anthony Vanelli, Lucy Vanelli, Minnie Vanelli, Jeanette Vanelli, Josephine Vanelli, Joseph Bolsei, Elizabeth Steffani

### **GARBUTT SCHOOLS – DISTRICT NO. 3**

In 1812 the State Legislature passed laws requiring the various towns to form school districts. The Garbutt district was formed and known as Caledonia district No. 10. When the Town of Caledonia was divided in 1821 and the Town of Wheatland was formed, the Garbutt school district became District No. 3.

In 1813 the trustees of Garbutt School voted to purchase from Peter Sheffer II the lot at the south west corner of Union St. and Mumford-Scottsville Road, including the log school house which Peter Sheffer II had started to build. The Trustees raised the sum of \$100.00 to finish the school house. It was used for a school until the summer of 1831, when it was sold for \$30.00. It was removed and a new stone school house was built on the same site, at a cost of \$341.00.

From 1831 to 1854 Garbutt had two schools. The new stone school house was used for the primary department while the more advanced classes were held in the Church building located by the old cemetery on the hill north of the four corners on the east side of Union St.

In 1846 the trustees were authorized to incur such expenses as were necessary for the fitting up of the lower part of the Church on the hill as a school room. The upper part of which was already occupied as a school.

In 1854 the school trustees were notified that the district would not be allowed to occupy the Church on the hill as a school. The Church was razed in 1856.

From 1854 to 1871 repairs were made to the old stone school house, while discussions and meetings were held to decide about a new school house, finally in 1871 it was decided to build a frame school house on the same site. The contract was let to Talcott Wells a carpenter from Scottsville Town of Wheatland, for \$2,200.00 the building was started in July, 1871 and completed in November of the same year.

In 1913 the school board appropriated two hundred dollars to paint the floor, install a cement sidewalk and make general improvements. In the following year 1914, the sum of fifty dollars was appropriated and the children, for the first time were given medical examinations.

In the 1920s with the increase of children of school age the capacity of the schoolhouse became inadequate. It was decided to hire two more teachers and rent an annex. The trustees rented the little "Tailor Shop" building next west of the school house.

In 1940 a resolution was passed that Scottsville High School be offered \$1,400.00 per year for a period of five years to accept all Garbutt pupils in the school. The offer was accepted by the Scottsville High School. Since centralization in the early 1950s the pupils are all transported to Scottsville School by school bus. The Garbutt School has since been demolished.



Garbutt School Dist. No. 3, 1871, located on the south west corner of 4 corners at the intersection of Union St. and Scottsville-Mumford Roads.



Garbutt School after the cement side walk was installed in 1913. The old Break-of-Day Store and Trading Post in the background.



### Garbutt School – 1906-07

1. Glen Despard, 2. Thomas Allen, 3. Clarence Brennen, 4. ? Ewart, 5. ?, 6. Ruth Ewart, 7. Isabel Hoag, 8. ?, 9. Viola Cazeau, 10. ?, 11. Jack Eggleston, 12. Frank Ewart, 13. Louis Price, 14. James Hoag, 15. Walter Sackett, 16. Emmet Cody, 17. Julian Eugene Mc Vean, 18. Harry Chamberlain, 19. Eleanor Garbutt, 20. Janet Dix, 21. Walter Ewart, 22. Primus Coles, 23. Howard Eggleston, 24.?, 25. Harry Allen, 26. Margaret Garbutt, 27. Ruth McVean, 28. Ida Cody, 29. Helen Eggleston, 30. ?, 31. John Coles, 32. Homer Sackett, 33. James Couch, 34. William Coles, 35. John Cody.



### Garbutt School – 1915

Front row—left to right: 1. Arthur Torpey, 2. ?, Johson, 3. Eugene Torpey, 4. John Torpey, 5. W. Hoag, 6. ?, 7. T. Carey, 8. ?, 9. T. Hoag, 10. ?, 11. C. Hannock, 12. Eugene Cox, 13. ?, 14. S. Hoag, 15. Philip Garbutt. Second row—left to right: 1. ? Amiger, 2. ? Amiger, 3. ? Amiger, 4. ? Millan, 5. ?, 6. Katharine MacQueen, 7. M. Hoag, 8. ?. Third row—left to right: 1. M. Carey, 2. T. Allen, 3. I. Hoag, 4. M. Redmond. Teacher—Mrs. Moulton.



## Garbutt School – 1931

*Teachers*—Miss Shearer, Miss Margaret McCabe, Mrs. L. Boutwell

*First row*—left to right: 1. Joe Shero, 2. Frank Plasek, 3. Garet Gordon, 4. Louise Jeffries, 5. Richard Shero, 6. Anna Pennaggio, 7. ?, 8. Rose Penaggio, 9. ?, 10. Ninna Mary Saeva, 11. Sammy Redman. *Second row*—left to right: 1. Ruth Gordon, 2. Patsy Damabio, 3. John Saeva, 4. Anna Kuz, 5. Phillis Danubio, 6. Josephine Saeva, 7. Mary Pennagio, 8. Mary Shortino, 9. Mary Pulvino, 10. Margaret Malloch, 11. Eleanor Redman, 12. ?. *Third row*—left to right: 1. Joe Saeva, 2. ?, 3. ?, 4. Joseph Shortino, 5. Freddy Shero, 6. Mattie Kowolski, 7. Peter Kuz, 8. Elizabeth Redman, 9. Audrey Fee. *Fourth row*—left to right: 1. Miss Shearer, 2. Geraldine Perry, 3. Mary Gordon, 4. Harvey Redman, 5. Stella Shero, 6. Miss Margaret McCabe, 7. Stella Kowolski, 8. Vinzi Shortino, 9. Victoria Kowolski, 10. Mary Furibunda, 11. Nellie Jeffries, 12. Elizabeth Jeffries, 13. Jennie Furibunda, 14. Mrs. Boutwell.

## **Wheatland School District No. 4**

The school house on the north side of South Road, Wheatland known as District No. 4, was built shortly after 1850. A deed for the property is dated June 3rd, 1850 from Thomas A. Estes to the trustees. The trustees were Peter Shaw, Robert Estes and John Lowry. They paid thirty-five dollars for the lot.

The school was closed in 1948 and the children sent to Scottsville school. The school building is now owned by Martin Giles. The lot was sold and a house erected on it.



## **District No. 4 South Road, Wheatland**

The school house stood on the north side of the South Road, Wheatland



### School Room District No. 4, South Road, Wheatland

Laura Miller, Teacher, about 1886. *Left side, in front:* Jeanette Miller, *Left side, left to right:* 1. Teacher, 2. Nora Adey, 3. Ella Farrell, 4. Linda Farrell, 5. Louis Estes. *Left to right, right side in background:* 1. Electa Steele, 2. Willie Estes. *Right side, front row:* 1. Oliver C. Miller, 2. Martin Farrell, 3. Archie McCowan, 4. Willie Farrell, 5. Paulina Adey, 6. Nettie Weeks.



### School District No. 4, South Road, Wheatland – 1898

*Front row—left to right:* 1. Claude Keebler, 2. Elmer Faulkner, 3. Bert Ketchum, 4. Preston Rulifson, 5. Robert Coates, 6. Clara Estes, 7. Hazel Stokoe, 8. Ruth Coates. *Back row—left to right:* 1. Howard Estes, 2. Adam Coates, 3. Clarence Stokoe, 4. Elroy Giles, 5. Lois Rulifson, 6. Helen Estes, 7. Frances Rulifson, 8. Bernice Giles.



**District No. 4, South Road, Wheatland, about 1899**

*Left to right:* 1. Howard Estes, 2. Bernice Giles, 3. Clarence Stokoe, 4. Helen Estes, 5. Elroy Giles, 6. Frances Rulifson.



**District No. 4, South Road, Wheatland, 1912-13**

*Left to right—back row:* 1. Isabel Stokoe, 2. Celia Wittman, 3. Elizabeth Schillinger, 4. Hazel Stokoe, 5. Florence Heffer, 6. Altha Heffer, 7. Marion Brooks. *Left to right—front row:* 2. Andrew Wittman, 2. Marion Schillinger, 3. Marion Wittman, 4. Julia Schillinger, 5. Willie Schillinger.



**Wheatland School District No. 4, South Road, 1917**

*Front row—left to right: 1. Helen Wittman, 2. Charles Schillinger, 3. Florence Schllinger, 4. Pearl Elliott, 5. Marjorie McPherson, 6. William Wittman, 7. Seldon Stokoe, 8. Anna May Coates, 9. Isabel Estes. Back row—left to right: 1. Marion Elizabeth Cullings, 2. Lora Nelan, 3. Anna Krenzer, 4. Marian Schillinger, 5. Marian Wittman, 6. ? Krenzer, 7. Helen Schillinger, 8. Violet Elliott.*



**School District No. 4, South Road, Wheatland—1917**

*Front row—left to right: 1. Lawrence Krenzer, 2. Isabel Estes, 3. Helen Wittman, 4. Pearl Elliott, 5. Violet Elliott, 6. Anna Mae Coats, 7. Marion Schillinger. Back row—left to right: 1. William Wittman, 2. Seldon Stokoe, 3. Florence Shillinger, 4. Lora Nelan, 5. Anna Krenzer, 6. Marion Wittman, 7. Kathryn Krenzer, 8. Elizabeth Cullings.*

## District No. 5, North Road

In 1838, School No. 5 was erected on the southwest corner of Wheatland Center and North Roads. The school was closed in 1948 and the children sent to Caledonia-Mumford Central School.

The school building after standing empty for some time was moved to the Jack Miller Gravel pit on North road and is used for an office building.

Four generations of one family went to school there.

1. Daniel Eriel Rogers-born, Jan. 17th, 1811
2. His son, Byron Leverue Rogers-born, 1849
3. His daughter Irene Frances Rogers Garbutt-born, June 4th, 1884
4. Her daughter Helen Rogers Garbutt-born, Dec. 25th, 1907  
also Helen's father, Roy Cox Garbutt, went there to school-born, 1882.

Some of the teachers who taught there were: Rebecca Armstrong, Miss McNaughton, Miss Mary Selfridge, Mrs. Sarah Smith Johnson, Mr. Daniel S. Dickenson, Miss Elizabeth Mack, Miss Daisy Ward, Miss Hazel Wells, Miss Annetta Weeks, Mrs. Hilda Smith Booth, Mrs. Leah Sage, Mrs. Virginia Keefe, Mrs. Mary E. Farmer Collins, Miss Katharine Bissell, Miss Sykes, Miss Duffy, Miss Minerva Hildreth.



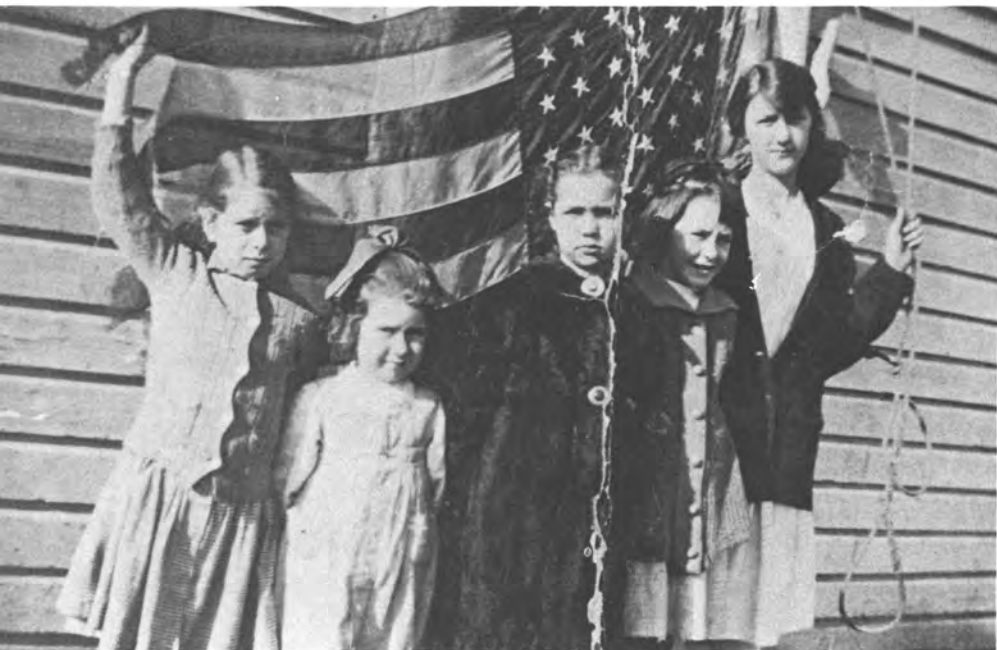
## Wheatland School No. 5

The school house was built in 1838, it was built on the corner of North Rd. and Wheatland Center Rd. It is now used for an office building at the Jack Miller Gravel Pit.



### **Wheatland School District No. 5**

*Left to right: Nicholas Hemmerick, Josephine Hemmerick, Barbara Hemmerick, Joseph Hemmerick. Back row: not known.*



### **Wheatland School No. 5 – 1916**

*Left to right: 1. Helen Garbutt, 2. Ella Kingsbury, 3. May Ladd, 4. Two O'Dell girls.*



### **Going to School in 1917**

Ella and Eugene Kingsbury going to school in 1917, note the dinner pails and the high button shoes, the hair ribbon and the short pants the boys wore.



### **Wheatland School No. 5 - 1928**

*Miss Hildreth—Teacher*

Cecelia MacDonald, Rita MacDonald, Elizabeth MacDonald, Evelyn Johnson, Paul Whitney, Donald Miller, Joseph MacDonald, Martin MacDonald, ?

## **Wheatland Center School District No. 6**

Wheatland Center School No. 6 located on the east side of Wheatland Center Road, just north of Oatka Creek. A frame school house was built by District No. 6 in the middle 1830s. In 1846 another school house was built. The land for the school was purchased from Ephraim Finch, who sold the property to the trustees, Henry Gilman, Benjamin Bissel, and William Armstrong for the sum of one dollar.

In 1855, Mr. Asher Bennett, Superintendent of Common Schools in the Town of Wheatland, gave to the trustees, Donald McNaughton and Frank Finch, the sum of \$24.14 public money apportioned to the district to pay the teacher Miss Susan A. Nichols.

The school was closed in 1948 and the children sent to Caledonia-Mumford School. The school building has been converted to a dwelling and is now the home of Mr. and Mrs. Arthur Offen.



**Wheatland Center School District No. 6**



### Wheatland School District No. 6 – 1922-23

*Teacher: Miss Georgia Vokes*

*Front row—left to right: 1. ?, 2. Evelyn Johnson, 3. Francis Grattan, 4. ?. Second row—left to right: 1. Jennie Sinacore, 2. ?, 3. ?, 4. ?. Third row—left to right: 1. Edwin Vokes, 2. Marion Grattan, 3. Jessie Kinsbury. Top row—left to right: 1. ?, 2. ?, 3. ?.*



### Wheatland School District No. 6

*Miss Georgia Vokes — Teacher*

1. Charles Angelo, 2. Dalton Vokes, 3. Tony Angelo, 4. ? Shortino, 5. Margaret Gratten, 6. Jennie Sinicore, 7. ? 8. ?, 9., 10. Junior Campbell, 11. James Turner, 12. Stella Vokes, 13. Ella Kingsbury.

## **Belcoda School District No. 7**

A log school house was built sometime before 1811, and is supposed to have stood on the north west corner of Belcoda and Harmon Roads.

In 1815 the people of Belcoda District No. 7 built a new brick school house. The brick was obtained from David Farwell's brick yard for \$1.12 per thousand. The exact location of this school is not known. It was built before the old log school was razed. For many years there was discussion about building a new school to replace the one built in 1815. Finally, in 1866, a building committee was chosen and a plan for a new school house was decided upon. A brick school house was erected in 1867 on the corner of Harmon and Belcoda Roads. It was occupied until 1942 when the district voted to close the school and send the pupils to Caledonia School.

The school house is now used as a residence.



**Belcoda School**



Number 7 School Belcoda, located on the Corner of Harmon Rd. and Belcoda Rd.



### **Belcoda School Group – 1918**

Miss Nellie Brown—Teacher

*Back row—left to right: Arnold Baker, Bill Ranous, Eddie Englerth, Leonard Ranous, Fred Englerth. Second row: Harold Borgus, Edwin Ranous, Charles Davis, Robert Englerth, Fred Embling, George Reese. Front row: Unknown, Mike Baker, Paul McGinnis.*



**Belcoda School Group – 1927**

*Back row:* Frank Saeva, Fred Smith, James Fisher, Kenneth Bennion, Ruby Smith (Manly).  
*Middle row:* Gerald Fisher, Harold Fisher, Joe Saeva, Myrtle Smith. *Front row:* ?, Louis Fisher, Janet Campbell.



**Belcoda School Group - 1927**

Miss Loretta Horgan—Teacher

*Back row:* Louis Fisher, Evelyn Fisher, ?, Katie Bennion. *Front row:* ?, Rose Fisher, ?, ?, ?, ?.



### Belcoda School Group – 1927

*Back row:* Frank Saeva, Kenneth Bennion, Fred Smith, James Fisher, Jim Chapman, Hugh Chapman, Ruby Smith. *Front row:* Harold Fisher, Joe Saeva, Gerald Fisher, Molly Chapman, Myrtle Smith.



### Belcoda School – 1934-1935

Mrs. Margaret Hughes—Teacher

*Beginning at left:* Janet Wyand, Charles Fisher, William Barrett, Henry Dempsey, Joe Hughes, Mary Fisher, Dorothy Dempsey, Robert Barrett, Jack Farrell, Eleanor Boyle, James Dempsey, John Dempsey. *Right:* Eugene Barrett, James Fisher, Fred Barrett, William Fisher, Mary Smith, Monica Boyle, Robert Fisher, Charles Boyle (*standing*), Mildred Boyle, Florence Fisher.

## Mumford Schools

The first school house west of the Genesee River was built in 1803. It stood on a knoll on the south side of the Oatka Creek Road, about 550 yards north of the bridge over Oatka Creek. The land was obtained from John McVean. The first teacher was Alexander McDonald and it was said that he never spoiled a child by sparing the rod.

The first school house in the Hamlet of Mumford was built in the early 1820s. It was located on the west side of Williams St. on the third lot north of Dakin St.

The school house built on William St. in 1820 became too small to serve the needs of the growing area. A new and larger stone school house was built on the north side of Dakin St. on the second lot west of Main St. It consisted of one large room but later another room was added. The deed to this property was dated, May 1, 1832, from Elihu Mumford to the trustees of the district, for the sum of ten dollars.

In 1860, a brick schoolhouse was built on the corner of Dakin and William Streets, consisting of two rooms at a cost of about \$2,800.00 dollars. The builder was Mr. Renselaer W. Wilcox, assisted by his sons, William, Myron and Charles Wilcox. There were about 180 scholars in the district at the time.

The brick school house continued in use until 1950 when the district was included in the Centralization system and the pupils sent to Caledonia.

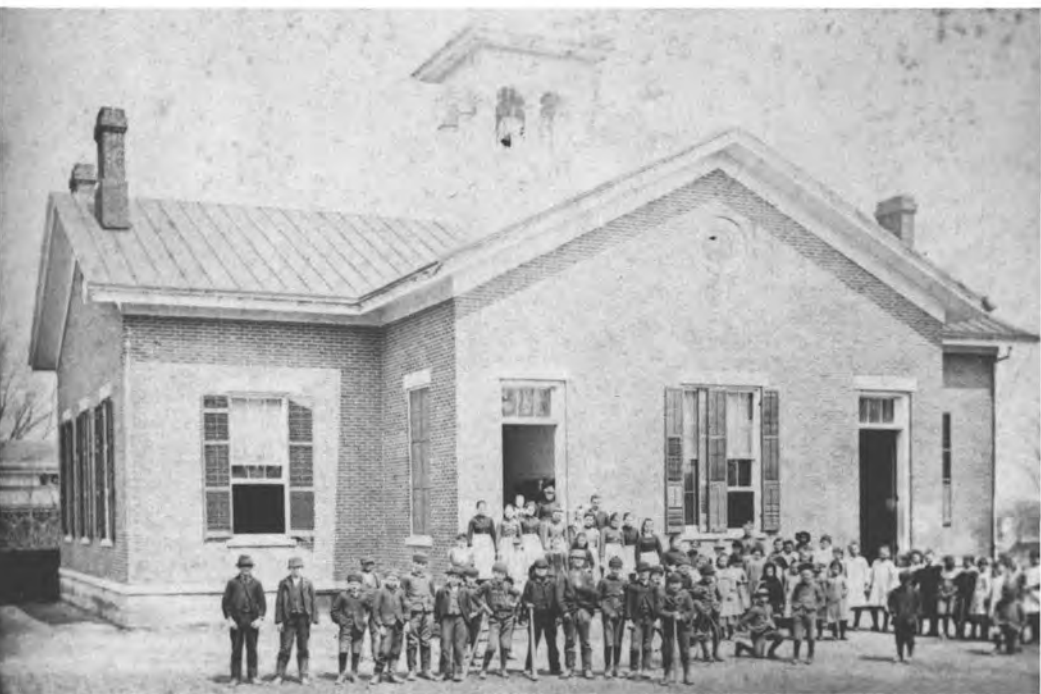
The brick school is now used for a factory with an addition built in the front for a post office.



Stone school house, Mumford, N.Y., built 1832 on the north side of Dakin St., at first a one room school, later another room was added. Some of the teachers were James B. Covey, Lanklan Catna, Samuel D. Simons, Reuben D. Jones, D.D.S. Brown.



Mumford School District No. 8, brick school built 1860, on the corner of Dakin and William Streets, Mumford. It was used for a school until 1950, when the district was centralized with Caledonia. The brick building now contains the post office and an addition contains business offices.



Mumford School, D. A. Lockwood, *Principal*; Mary E. Steele, *Teacher*



### Mumford, N.Y. Class of 1872

1. Johnie Ward, 2. Clara Munson, 3. Flora Baker, 4. Lid Blackmer, 5. Libbie Gilman, 6. Net Smith, 7. Laura Lawson, 8. Ida Bostwick, 9. Frank Hyde, 10. Sarah Wolcott, 11. George H. Bemis, 12. Hat Field, 13. Clara Skinner, 14. Rosie Giles, 15. Maggie Craig, 16. Walter Wilcox, 17. Billy Dade, 18. Kate Graham, 19. John Kane, 20. Mary Smith, 21. Kate McQueen, 22. Lillian Allen, 23. Cary Blackmer, 24. Annie Smith, 25. Irene Farley, 26. Lizzie McKenzie, 27. Henry Howard, 28. Rosie Smith, 29. Mattie Field, 30. Ethan Allen, 31. Mary Boylan, 32. Emma Staples, 33. Mack McNaughton, 34. Jennie Smith, 35. George Wolcott, 36. Fannie Bostwick, 37. Robert Nightingale, 38. Sumner Munson, 39. Jennie Field, 40. John Fitzgerald, 41. Edwin Wolcott, 42. Charley Nicholls, 43. Jim Keefe, 44. Charley Gilman, 45. Tom Graham, 46. George Coslow, 47. George McNaughton, 48. Fannie Redband, 49. Frank Lawson, 50. Archie Grant, 51. Mary Murphy, 52. Fanny Woodward, 53. Kittie Callan, 54. Will Austin, 55. Fred Theirfeldt, 56. Tina Smith, 57. Jim Murphy, 58. Eddie Foley, 59. Eddie Coslow, 60. Sam Nightingale, 61. Jim McQueen, 62. Chet Woodward, 63. Erny Nightingale, 64. John Lawson, 65. Herb Munson, 66. John Callan, 67. Lawrence Callan, 68. Anna Butler, 69. Lizzie Nicholls, 70. Jim McCormick, 71. Mike Drury.



### Mumford School - 1891

Lottie McArthur — Teacher

1. ?, 2. Dan O'Donald, 3. Maud Ward, 4. Bess Campbell, 5. Anne Sheridan, 6. Lucia Byam, 7. Jennie Sheridan, 8. A. McCombs, 9. Geo. MacDonald, 10. Lucy Sherman, 11. Bertha Purdie, 12. Grace Donnelly, 13. May Kime, 14. Jennie O'Neil, 15. Gusty Kime, 16. Mattie McCombs, 17. Frances McCombs, 18. Margaret Stewart, 19. Al McCall, 20. G. Thierfelat, 21. William Campbell, 22. Fred Grauer, 23. Robert Nichols, 24. Geo. McCombs, 25. Tom Sims, 26. C. Eastwood, 27. Willie A. Campbell, 28. Ed Buckley, 29. Harry Harvey, 30. J. Lawson, 31. Lottie McArthur—Teacher.



### Grammer Department - Mumford School 1891

Delbert Hibbard, *Principal*

*Left to right — first row:* 1. Ethelyn Miller, 2. Janet Armstrong, 3. Ida Plimpton, 4. A. B. McCombs (Ada Belle), 5. Maud Tennet, 6. Rachel Grauer, 7. Jettie O'Donnell, 8. Ideline Stewart, 9. Harvey Freeman. *Second row:* 1. Florence Stewart, 2. Alta Kate Stewart, 3. Stella MacArthur, 4. Nellie Robinson, 5. Harriette Stewart, 6. Anna Donnelly, 7. Mildred Boothroyd, 8. Eva Nichols, 9. Adeline Buchley, 10. Lizzie O'Neil. *Third row:* 1. Aloysius McCall, 2. Charles O'Donnell, 3. Flora Smith, 4. Lee Purdy, 5. Hattie Smith, 6. Ida Stewart, 7. Ruth Campbell, 8. Christie Campbell, 9. Lottie Nichols, 10. Bertha Smith. *Fourth row:* 1. Henry Roberston, 2. Harry McNaughton, 3. James Donnelly, 4. Allen Campbell, 5. Neil Purdy, 6. Lute Buckley, 7. Frank Boothroyd, 8. Ed Thierfeldt, 9. Julius Austin, 10. Moses O'Donnell.



### Mumford School District No. 8 — 1901

*Teachers—*Miss Estelle MacArthur; Miss Anna Morrisey

*First row—left to right:* 1. Dominic Burelli, 2. Henry Washington, 3. Earl Ball, 4. James Baldeck, 5. William Stewart, 6. Florence Washington, 7. Celia Campbell, 8. Marie Christie, 9. Ruth Campbell, 10. Helen Nichols, 11. Arthur Redband, 12. Edward Skivington, 13. Genevieve Woodward, 14. Richard Fitzgerald, 15. Thomas Campbell. *Second row—left to right:* 1. Leo Hickey, 2. Loyd Weidner, 3. Harold Hyde, 4. George Skivington, 5. Thomas O'Neil, 6. William Cramer, 7. Delbert McCombs, 8. Frederick Heffer, 9. Maynard Baugher, 10. Anna Washington, 11. Florence Redband, 12. Mabel Verney, 13. Roy Smith, 14. Agnes Knight, 15. Alice Callan. *Third row—left to right:* 1. May Lawson, 2. Helen McCabe, 3. Ruth Redband, 4. Frances Weidner, 5. Delbert McCombs, 6. William Knight, 7. John Turney, 8. Edward Carr, 9. Edward Baldeck, 10. Charles Cramer, 11. George Hainer, 12. James Cook, 13. Josephine Marion, 14. Grace Grant, 15. Rose Bourelli. *Top row—left to right:* 1. Elizabeth Skivington, 2. Peter Turney, 3. Grace McCombs, 4. Hazel Cook, 5. Walter Campbell, 6. Laura Knight, 7. Charles Graur, 8. Isaac Johnson, 9. Elbert Carr, 10. Willie Hickey, 11. Louis Marion, 12. Bruce Nicholls, 13. Louis Johnson, 14. Dan Harrigan.



### Mumford School—1901

*Teachers*—Mr. Eugene Lath; Mrs. Guthrie; Miss Morrisey; Miss Estelle MacArthur

1. Lillian Wilson Baldeck, 2. Catharine Hickey Kregal, 3. Grace Winslow, 4. Ida Rogers, 5. Annie Turner, 6. Mary McCall, 7. Daisy Ward Harvey, 8. Sarah Smith Johnson, 9. Mary O'Neil Conner, 10. Herbert Kingsbury, 11. Margaret Kingsley, 12. Mary Campbell Steffany, 13. Mary Boylan, 14. Allie Baldeck, 15. Flossie Lear, 16. John MacIntee, 17. Nellie Redband, 18. Clayton Burch, 19. Margaret Callan Phillips, 20. Robert Stewart, 21. Bessie Woodward Grant, 22. Genieve Callan Fahy, 23. Mamie Utter, 24. Pearl Austin Ball, 25. Stuart Grant, 26. Florence Woodward, 27. Howard Kinsley, 28. Eliza McCombs Frey, 29. Katie Mann, 30. George Clark, 31. Edna Kingsley, 32. Josephine Rogers, 33. She<sup>h</sup>y Dawson, 34. Charles Nichols, 35. Francis Skivington, 36. Nellie Skivington Harrigan, 37. John Kime, 38. Belle Clark, 39. Dean Kinsbury, 40. Leo Austin, 41. Bill Carr, 42. Tom Sims, 43. Julia Kingsley, 44. Mr. Eugene Lath, 45. Hazel Ward Lindsay, 46. Mrs. Guthrie, 47. Miss Morrisey, 48. Annie Campbell Hanna, 49. Miss Estelle MacArthur, 50. Bessie Robertson McCombs, 51. Howard Hadley, 52. John O'Neil, 53. Bess MacNaughton McPherson, 54. Wylie Guthrie, 55. Celia Behan, 56. John Freeman, 57. Mary Woodard.



### Mumford School District No. 8 — 1906

*Teachers*—Principal, Mr. Herbert Haight, Miss Ellen Guthrie

1. Lucille McMahon, 2. Anna Skivington, 3. Helen Skivington, 4. Eva Shermson, 5. Mary Skivington, 6. Bruce Brown, 7. James Campbell, 8. ?, 9. Ruth Cook, 10. Maynard Boyer, 11. Anna Washington, 12. ?, 13. Emmett Skivington, 14. Ross Brown, 15. Celia Campbell, 16. Alice Callan, 17. ?, 18. ?, 19. Grace Gran, 20. Ruth Campbell, 21. May Lawson, 22. Freeman Skivington, 23. Florence Washington, 24. ?, 25. ?, 26. ?, 27. ?, 28. Rosie Borrelli, 29. ?, 30. ?, 31. ?, 32. ?, 33. ?, 34. James Baldeck, 35. Jane Abbott, 36. Frederick Heffer, 37. ?, 38. Sidney Robinson, 39. Helen Nichols, 40. ?, 41. ?, 42. ?.



### Mumford School – 1909

1. ?, 2. Frances Redband, 3. Gertrude Callan, 4. Harry Clark, 5. ?, 6. Marie McCombs, 7. Mary Callan, 8. Lena Reagan, 9. ?, 10. Oliver Kingsbury, 11. Paul Skivington, 12. Jeanette Redband, 13. Florence Boyland, 14. Burton Kingsbury, 15. Elizabeth Keefe, 16. Charles Nichols, 17. Anna Mae Keefe, 18. Emogene Couse, 19. Amose Abbott, 20. ?, 21. ?, 22. Arthur Day, 23. Eugene Campbell, 24. ?, 25. Margaret Keefe, 26. Thurza Abbott, 27. Frederick Heffer, 28. ?, 29. ?, 30. Helen Skivington, 31. George Callan, 32. ? Boylan, 33. Roy Sickles, 34. ? Boylan, 35. Myrtle McCombs, 36. Ola Skivington, 37. ?, 38. ?, 39. Glenn Sickles, 40. Clifford McCombs, 41. ?, 42. ?, 43. Jeanette Campbell, 44. ?, 45. Katherine Skivington, 46. Margaret Campbell, 47. Lucille McMahan, 48. ? Pease, 49. ?, 50. Roy Smith, 51. Florence Redband, 52. Maud Ball, 53. Arthur Redband, 54. ?



### Mumford School

1. Mary Reagan, 2. Ina Skivington, 3. Eugene Feeman, 4. Reba O'Donnel, 5. Glen O'Donnel, 6. John Harvey, 7. Gertrude Johnson, 8. Patrick Broderick, 9. Harold Wilson, 10. ?, 11. Lucille Buckley, 12. Eva Skivington, 13. Helen Kregal, 14. Jane Nichols, 15. Wells Rulifson, 16. Jim Slaughter, 17. Kenneth Kregal, 18. Mike Reagan, 19. Francis Keefe, 20. Angeline Uvena, 21. John Buckley, 22. Eva Robertson, 23. Catherine Nichols, 24. Lawrence Boylan, 25. Warner Johnson, 26. Marion Robertson, 27. Grace Slaughter, 28. Louisa McCombs, 29. Alice Reevel, 30. Roberta Reevel, 31. Martha Slaughter, 32. Ella Reevel, 33. Helen Boylan, 34. Harry Day, 35. Ashby Chapman, 36. Huey Chapman, 37. Wilber Kime, 38. George McAvoy, 39. George Pease.



### Mumford School 1923

Teacher—Mrs. Loretta McKay

1. Francis Buckley, 2. Helen Buckley, 3. John Phillips, 4. Fred Coolidge, 5. James O'Donnell, 6. George McKeon, 7. Dorothy McKeon, 8. Cecelia McKeon, 9. Dorothy Fahy, 10. Dorothy Robertson, 11. Jack Kime, 12. Molly Chapman, 13. R.J. Burkhart, 14. Margaret Burkhart, 15. Dorothy Boylan, 16. Alice Coolidge, 17. Jane O'Donnell, 18. Beatrice Trojan, 19. Hughie Chapman, 20. Donald David, 21. ? Slaughter, 22. James Chapman, 23. Robert Burkhart, 24. John Watson, 25. Virginia Nichols, 26. Emma Grace Lawson, 27. Harry Harvey, 28. J.L. Freeman, 29. Ashby Chapman, 30. Mildred Feeley, 31. Viola O'Donnell, 32. Anita Jenks, 33. Ethel Smith, 34. Charles Pease, 35. ?, 36. Alma Trojan, 37. Blanch Barney, 38. ? Bennett.



### Mumford School District No. 8, 1923

Front row—left to right: 1. Cameron Ingraham, 2. Wilbur ?, 3. Robert Milne, 4. Arnold Burkhart, 5. Gertrude Ingraham, 6. Monica Keefe, 7. Ruby Smith, 8. Andy Uvino, 9. George Buckley. Top row—left to right: 1.?, 2. ?, 3. ?, 4. Donald Milne, 5. Patrick Broderick, 6. ?, 7. Glenn O'Donald.



### Mumford School - 1924

1. Bill Robertson, 2. John Nichols, 3. Floyd Kilbury, 4. Edward Davis, 5. Glenn O'Donnell, 6. Robert Milne, 7. Andrew Uveno, 8. Arnold Buckhart, 9. Stuart Snyder, 10. George Buckley, 11. Ruby Smith, 12. Margaret Reagan, 13. Monica Keefe, 14. Margaret Freeman, 15. Margaret O'Donnell, 16. Jane Snyder, 17. Margaret Buckley, 18. Marion Burke, 19. Stuart Grant, 20. Albert Carpenter, 21. Ina Skivington, 22. Donald Milne, 23. Edward Boylan, 24. Gertrude Elemgieme, 25. Jane Nichols, 26. Charles Stoddard, 27. Eva Skivington.



### Mumford School—1924

Mr. Raymond Meland—Teacher

1. ?, 2. Herbert Freeman, 3. ? Schribe, 4. ?, 5. Agnes Cooney, 6. Dorothy McKeon, 7. Dorothy Buckley, 8. Marjorie Baldeck, 9. Myrtle Diefendorf, 10. Jane O'Donnell, 11. Jennie Sinacore, 12. Dorothy Fahy, 13. ?, 14. Paul Feeley, 15. Louis Johnson, 16. Howard Slaughter, 17. Sam Sinacore, 18. Jack Kyme, 19. Charles Nichols, 20. John Phillips, 21. ?, 22. Daniel Diefondorf, 23. Eddie Davis, 24. James O'Donnell, 25. Eugene Cooney, 26. Fred Coolidge, 27. Hazel Harvey, 28. Virginia Pease, 29. Susan Freeman, 30. Margaret Guthrie, 31. Dorothy Feeley, 32. Dorothy Hannah, 33. Mildred Regan, 34. Celia McKeon.



### Mumford School—1924

*Left to right—front row:* 1. Hughie Chapman, 2. Virginia Nichols, 3. Alice Coolidge, 4. James O'Donnell, 5. George Buckley, 6. Robert Burkhart, 7. John L. Freeman, 8. Elizabeth Nichols, 9. William Sickles, 10. Dorothy Sage. *Top row—left to right:* 11. Ethel Smith, 12. Roberta Marshal, 13. Alma Trogan, 14. Ashley Chapman, 15. Harry Harvey, 16. John Watson, 17. Herbert Freeman.



### 1928 Mumford School District No. 8

*Front row—left to right:* 1. ?, 2. Jane Freeman, 3. Mary Freeman, 4. Robert Baldeck, 5. Marie McCombs, 6. William Thompson, 7. ?, 8. Donald Baldeck. *Top row—left to right:* 1. Clayton Jinks, 2. ? Trojan, 3. Norman Trojan, 4. Frederick Day, 5. ?, 6. ?, 7. Agnes Cooney.



## Mumford School District No. 8 – 1929

Teacher—Marie Horner

*Front row—left to right:* 1. Helen Buckley, 2. Betty Lockard, 3. ?, 4. William Hickey, 5. ?, 6. Elaine Boylan, 7. Jack Callan, 8. ?, 9. ?, 10. Jane Freeman, 11. Vernica Callan. *Second row—left to right:* 1. Donald Baldeck, 2. Evelyn Nichols, 3. ?, 4. Betty Skivington, 5.?, 6. Dorothy Hoag, 7. Robert Whiteside, 8. Marion Thompson. *Top row—left to right:* 1. James O'Neil, 2. ?, 3. Clayton Jinks, 4. Norman Trojan, 5. ? Abbott, 6. James Guthrie, 7. ?, 8. William Thompson, 9. Stanley Lyttle.



**Mumford School District No. 8 – 1931**

*Teacher—Mrs. Irene Kelley*

*Front row—left to right: 1. Helen Buckley, 2. Jane Freeman, 3. Doris Ladd, 4. Betty Skivington, 5. Jack Callan, 6. Stanley Lyttle, 7. Robert Baldeck. Top row—left to right: 1. Robert Whiteside, 2. ?, 3. Norman Trojan, 4. Frederick Day, 5. Clayton Jinks, 6. James O'Neil, 7. Donald Baldeck.*



**Mumford School District No. 8 – 1932**

*Teacher—Mrs. Irene Kelley*

*Front row—left to right: 1. William Callan, 2. Betty Paul, 3. Rita Jenovese, 4. Helen Thompson, 5. Delores McCombs, 6. ?, 7. ?, 8. ?, 9. ?, 10. Herbert Blaker. Second row—left to right: 1. ?, 2. Jack Callan, 3. ? Banks, 4. Stanley Lyttle, 5. Jane Freeman, 6. Betty Lockard, 7. ?, 8. Veronica Callan, 9. ?. Top row—left to right: 1. James O'Neil, 2. Betty Skivington.*



### Mumford School No. 8 – 1933

*First row—left to right:* 1. Helen Buckley, 2. Veronica Callan, 3. Evelyn Nichols, 4. Rita Jenovese, 5. Betty Lockard, 6. Doris Ladd, 7. Betty Skivington, 8. Jane Freeman, 9. ?, 10. ?, 11. ?, 12. Mary Freeman. *Second row—left to right:* 1. Louis Johnson, 2. Robert Whiteside, 3. Jack Callan, 4. ?, 5. Stanley Lyttle, 6. Donald Baldeck, 7. James O'Neal, 8. Charles Russ, 9. James Guthrie, 10. Robert Baldeck, 11. ?, 12. Beatrice Quackenbush, 13. Mr. Meland, *Teacher.* *Top row—left to right:* 1. ? Abbott, 2. Clayton Jinks, 3. William Thompson, 4. George Jinks, 5. Frederick Day, 6. ?, 7. ?, 8. Vaughn Sterling, 9. Josephine Sinacori, 10. Agnes Cooney.



### Mumford School District No. 8—1934

*Front row—left to right:* 1. Jerry Cator, 2. William Callan, 3. Thomas Coughnahan, 4. Gordon Grant. *Second row—left to right:* 1. Betty Lockard, 2. Doris Ladd, 3. June Brown, 4. Marion Thompson, 5. Betty Paul, 6. Helen Buckley, 7. ? Russ, 8. Delores McCombs, 9. Rita Jenovese, 10. ? Russ, 11. Veronica Callan, 12. Betty Skivington, 13. Elaine Boylan. *Third row—left to right:* 1. ?, 2. ?, 3. ?, 4. Jane Freeman, 5. Robert Baldeck, 6. Robert Whiteside, 7. Mr. Meland, *Teacher.* 8. Jack Callan, 9. Charles Banks, 10. ?, 11. ?, 12. ?, 13. Donald Baldeck. *Fourth row—left to right:* 1. Billy Thompson, 2. James O'Neil, 3. ?, 4. Beatrice Quackenbush, 5. ?, 6. ?, 7. Clayton Jinks, 8. Frederick Day, 9. Mary Owens, 10. ?, 11. ?, 12. Stanley Lyttle.



### Mumford School District No. 8 – 1935

*Front row—left to right:* 1. ?, 2. Jennie Sinacore, 3. ?, 4. Helen McCombs, 5. ?, 6. Barbara Burgraff, 7. ?, 8. ? Sinacore, 9. Helen Baldeck, 10. Betty Paul, 11. Marion Thompson, 12. Deleroes McCombs, 13. Mildred Quackenbush. *Second row—left to right:* 1. Marion Harkness, 2. William Callan, 3. Andy Hoody, 4. ? Russ, 5. Clarence Ladd, 6. Thomas Coughnahan, 7. John McKeon, 8. ?, 9. ?, 10. Charles Brown, 11. Charles Banks. *Third row—left to right:* 1. Jack Callan, 2. Lee Owens, 3. Doris Ladd, 5. Vera Brown, 5. Laverne Boylan, 6 ?, 7. Robert Smith, 8. Donald Freeman, 9. Edward Quackenbush, 10. Jerald Cater. *Top row—left to right:* 1. ?, 2. Rita Jenovese, 3. Stanley Lyttle, 4. James O'Neil, 5. ? Russ, 6. Frederick Day, 7. Beatrice Quackenbush, 8. Veronica Callan, 9. Jane Freeman.



### Mumford School District No. 8 – September 1940

*Front row—left to right:* 1. Joan Clark, 2. June Ferris, 3. Eleanor Boylan, 4. Eddie Paul, 5. Jane Taylor, 6. Harold Ladd, 7. George Banks, 8. Franklin O'Donnell, 9. June Quackenbush, 10. Donald Sheehan, 11. Ruth Cameron, 12. Rose Uvino, 13. Marcia Hayward. *Second row—left to right:* 1. Joyce Callan, 2. Miss Katherine Murray, *Teacher*, 3. Patricia Russ, 4. Miss Margaret Campbell, *Teacher*, 5. Eileen Callan, 6. Betsy Stoddard, 7. Virginia Nicholls, 8. Billie Cameron, 9. ?, 10. Joseph Goodwin, 11. Miss Iupa, *School Nurse*. *Top row—left to right:* 1. Ronald Boylan, 2. Robert Flick, 3. Virginia Ladd, 4. Louise Uvino, 5. Conzella Uvino, 6. Dorothy Cameron, 7. Doris Cameron, 8. June Tennent, 9. Alta Mae Quackenbush, 10. Virginia Ball, 11. June Brown, 12. ?.



### Mumford School District No. 8 – 1942

*Front row—left to right:* 1. Roger Sheehan, 2. Donald Cameron, 3. Vivian Bedford, 4. Kathleen Callan, 5. Jean Callan, 6. Kenneth Quackenbush, 7. ?, 8. Marcia Russ, 9. Yvonne Ladd, 10. Nancy Clark, 11. John Northrup. *Second row—left to right:* 1. Ruth Cameron, 2. Rose Uvino, 3. Eileen Callan, 4. Ira Geer, 5. Ruth Nicholls, 6. Donald Sheehan, 7. George Banks, 8. June Elliott. *Third row—left to right:* 1. Miss Murray, *Teacher*, 2. Marcia Hayward, 3. Franklin O'Donnell, 4. Harold Ladd, 5. Junior Meyers, 6. Loren Geer, 7. Virginia Nicholls, 8. June Quackenbush, 9. Miss Iuppa, *School Nurse*. *Top row—left to right:* 1. Betsy Stoddard, 2. June Ferris, 3. Patricia Russ.



### Mumford School District No. 8 – 1945

*Front row—left to right:* 1. Jean Callan, 2. Ruth Nicholls, 3. Pauline Robinson, 4. Betsy Stoddard, 5. Virginia Nicholls, 6. Eileen Callan, 7. Ruth Cameron, 8. June Quackenbush, 9. Franklin O'Donnell, 10. Thomas Roberson. *Second row—left to right:* 1. Fanny Williams, 2. Marcia Hayward, 3. Doris Cameron, 4. Patricia Russ, 5. Shirley Collins, 6. Eleanor Boylan, 7. Alta Mae Quackenbush, 8. Gary Sickles. *Top row—left to right:* 1. Eddie Paul, 2. Marvin Walsh, 3. William Cameron, 4. Kenneth Walsh, 5. Louis Williams, 6. Richard Hill, 7. Harold Ladd, 8. Mr. Meiland, *Teacher*, 9. Roderick Van Gorder.



### Mumford School – 1945

*Front row – left to right:* 1. Angie Uvino, 2. Helen Cameron, 3. ?, 4. Alan Ray Sickles, 5. Patricia Callan, 6. Elaine Cameron, 7. James McCombs, 8. Judy Stoddard, 9. ?, 10. ? Paul, 11. Barbara Blaker. *Second row – left to right:* 1. Donald Robertson, 2. Mark Robinson, 3. Charles Daniels, 4. ?, 5. Pete Majors, 6. Joseph Latko, 7. Stanley Latko, 8. John Kelley. *Third row – left to right:* 1. Frank Russ, 2. Marcia Russ, 3. Yvonne Ladd, 4. Ilene Baldeck, 5. Kathleen Callan, 6. Vivian Bedford, 7. Fanny Williams, 8. Taylor Majors, 9. Kenny Quackenbush. *Top row – left to right:* 1. Albert Baker, 2. Donald Cameron, 3. ?, 4. Richard Majors, 5. Toby Morris, 7. Timothy Robinson



### Mumford School – 1947

*Front row – left to right:* 1. ?, 2. Barbara Blaker, 3. David Thompson, 4. Richard Chesterton, 5. Paul Saeva, 6. Steven Coe, 7. Mary Ann Latko, 8. Robert Robertson, 9. Herbert Blaker, 10. Robert Goodwin, 11. Fred Brown, 12. ? Walker, 13. Robert Grant. *Second row – left to right:* 1. Alan Ray Sickles, 2. Audrey Clark, 3. Jeanette Hayward, 4. Margaret Majors, 5. Arlene Ladd, 6. Warren Finch, 7. Mary Ellen Kline, 8. Veronica Cooney, 9. Henery Zucker, 10. ?, 11. Ruth Nothinger, 12. ? Watson, 13. Charles Kelley. *Third row – left to right:* 1. Don Robertson, 2. ? Fortner, 3. Joseph Latko, 4. Elaine Cameron, 5. James Lunt, 6. Helen Cameron, 7. James McCombs, 8. Harold Livermore, 9. Stanley Latko, 10. Judy Stoddard, 11. Barbara Stoppelbean, *Fourth row – left to right:* Kenny Quackenbush, 2. Marion Warden, 3. ?, 4. Peter Majors, 5. Charles Daniels, 6. Washington Williams, 7. Mark Robinson, 8. John Kelley.

## Beulah School No. 9

The first school house was a small stone school house built before 1827, on the south west corner of Beulah and North Road.

The small stone school house was outgrown and in 1840 the trustees voted to erect a new school house. It was a rough boarded building, built between 1840 and 1845, on the same corner to the rear of the previous stone school house. Around 1860 the rough boarded school house was remodeled.

Miss M. Jeanette Ballantyne taught Beulah School in the summer of 1863 and the winter and summer of 1864. Miss Ballantyne was one of the first women teachers to be employed there in winter, she was the first to break the old custom of boarding around. When the trustees tried to engage her for another term she consented only on condition that a permanent boarding place be procured for her. The trustees thought Mr. Volney Brown's the best place to be procured for her. Because there she would always be taken to school in inclement weather, but when Mrs. Brown said she thought it worth two dollars per week they protested. They finally, however, consented to pay this exorbitant price for a week of seven days, washing included.

In 1919 the frame school house was moved from the south west corner across the road to the north side of North Road, on the second lot west of the corner of North and Beulah Roads. The district closed the school in 1938 and the students went to Caledonia School. The school house is now the home of Mr. and Mrs. William T. Reinagel.



Beulah District School No. 9, around 1845



Beulah District School No. 9, around 1912



### **Beulah School Group – 1924**

*Teacher—Robert Stirling*

*Top row—left to right: Vivian Coyle, Anna Vink, Adolph Vink, Helen Growney, Lawrence Campbell. Bottom row—left to right: Alice Stoddard, John Stoddard, Samuel Neal, Wilbur Boholtz, James Kelly, Earl Gillette, Harold Maddock, Unknown, Mary Kelly.*



### Beulah School – 1929

John Freeman—Teacher

*First row—front to back: Shelia Steedman, 2. Jimmy Steedman, 3. Kathrine Zostrocky. 4. ?, 5. Virginia Smith. Second row—front to back: 1. Norma Steedman, 2. Tom Welch, 3. Doris Maddock, 4. Donald Kelly, 5. Dorothy Kelly, 6. Dorothy Welch. Third row—front to back: 1. Robert Chesterfield, 2. August Smith, 3. David McCauly. Fourth row—front to back: 1. John Smith, 2. Harold Skeleton, 3. Isaac Skeleton. Fifth row—front to back: 1. ?, 2. Mike Zostrocky, 3. James Kelly, 4. Mary Smith. Sixth row—front to back: 1. ?, 2. Richard Stoddard, 3. John Stoddard, 4. Harold Maddock, 5. Mary Kelly. Four girls standing in back—left to right: 1. Lucille Preston, 2. Rose Steedman, 3. Marjorie Kelly, 4. Ruth Bresslin. Two boys standing beside Mr. Freeman: 1. Bob Blaker, 2. Gilbert Lashway.*



Beulah School District No. 9, just before closing in 1938. The boy in the picture - Donald Kelly.

